



Stanhope Gardens, SW7

£1,035,000

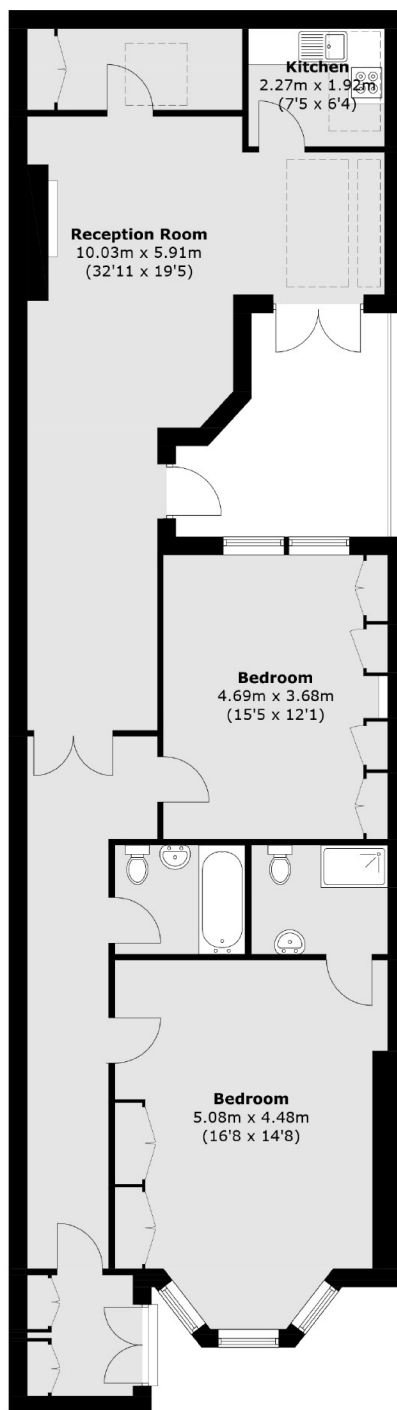
A well maintained two double bedroom apartment well located on Stanhope Gardens. The property comprises a large reception area with separate kitchen, two bedrooms and two bathrooms. The property further benefits from a private patio, access to communal gardens and a long lease.

Stanhope Gardens is situated just off Gloucester Road with plenty of restaurants and cafes and amenities. Gloucester Road Underground provides links to the city via the Piccadilly, District and Central Line.

Features

- Two Bedrooms
- Two Bathrooms
- Private Patios
- Long Lease
- Excellent Location
- Gloucester Road Station

Stanhope Gardens, London, SW7



Total area (approx.): 112.5 sq. m (1210.8 sq. ft)