



Old Brompton Road, SW5

£857,500

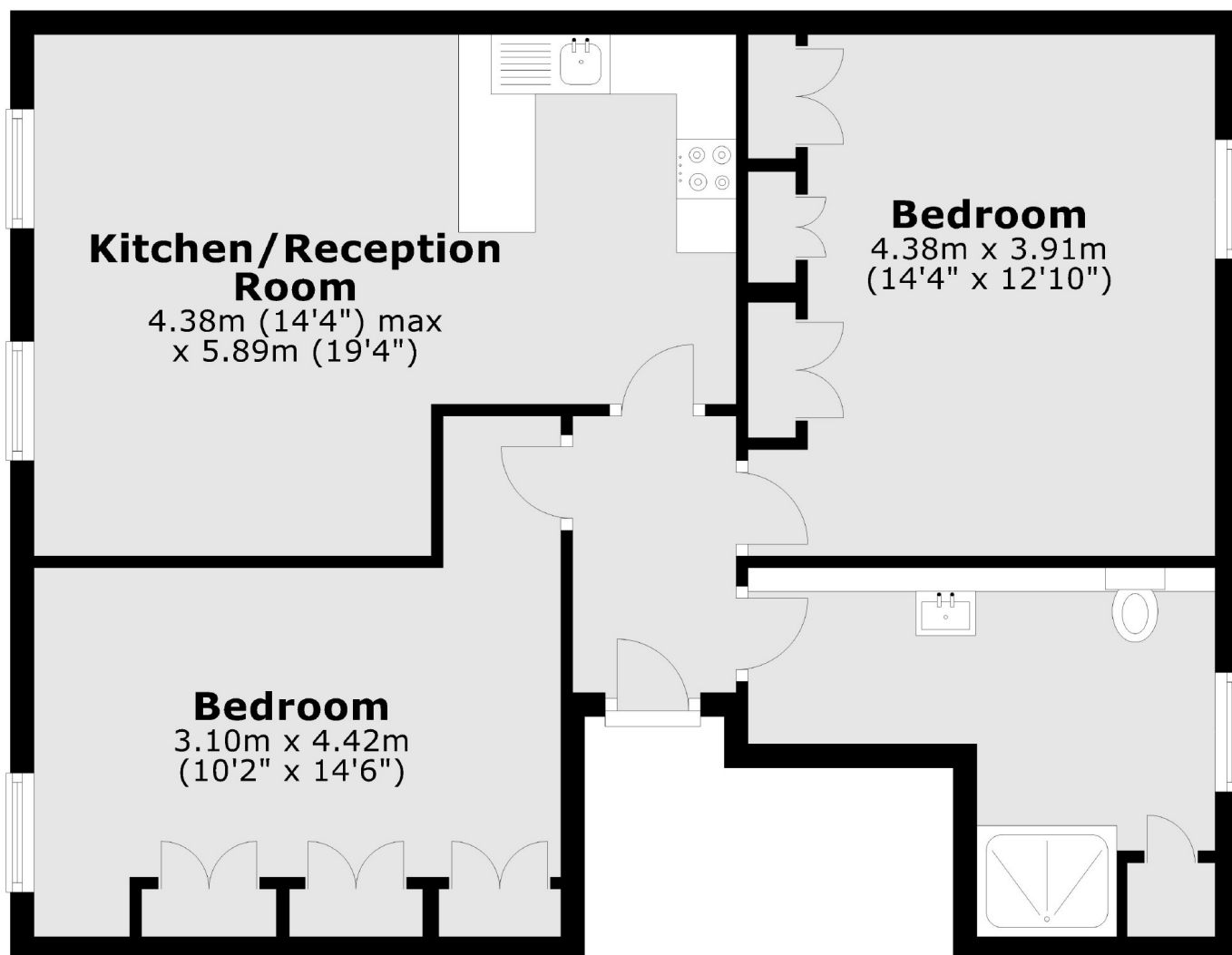
A bright and recently refurbished top floor apartment, benefitting from two double bedrooms, a modern bathroom and open plan kitchen living room. Each room has air conditioning which has recently been fitted and planning in place for a roof terrace.

Old Brompton Road is ideally positioned for all local the amenities on Gloucester Road and in close proximity to Kensington Gardens. The closest tube stations are Earls Court and Gloucester Road.

Features

- Two Double Bedrooms
- Long Lease
- Open Plan Living
- Modern Bathroom
- Air Conditioning
- Excellent Condition

Old Brompton Road, London, SW5



Total area: approx. 68.6 sq. metres (738.6 sq. feet)