



Pembroke Road, W8

£1,300,000

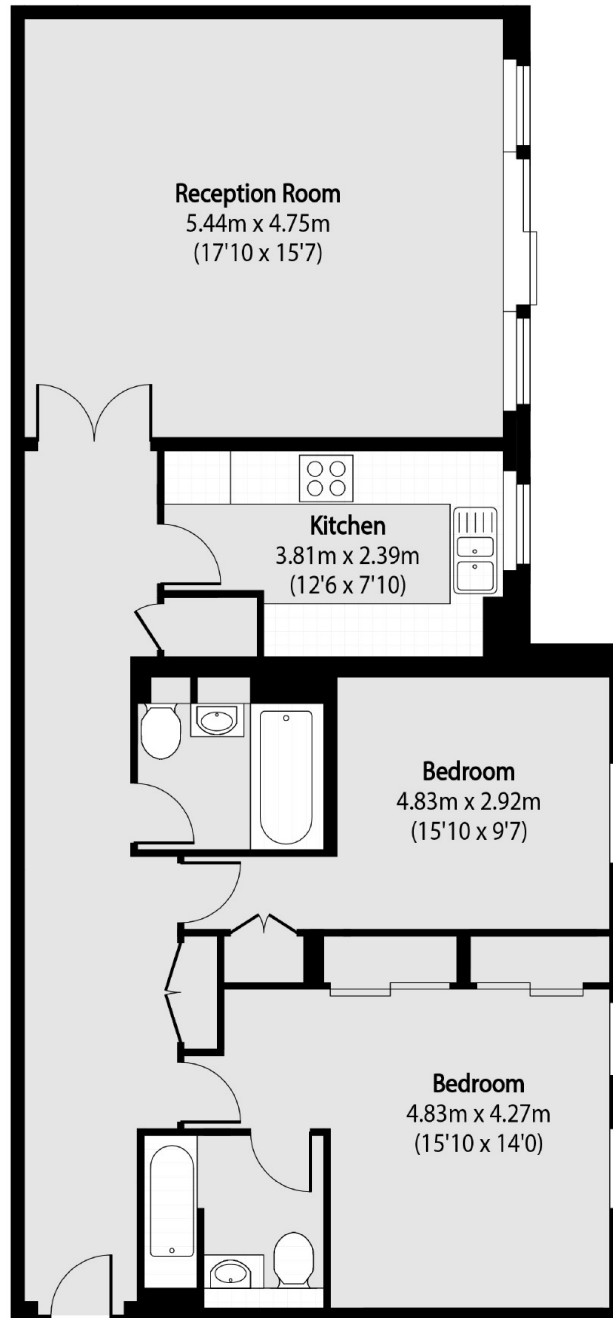
This modern, lateral two double bedroom two bathroom apartment is based on the 4th floor of a 24hr portered development. The property is finished to a meticulous standard throughout, further benefits include residents gym, pool & sauna.

Huntsmore House is located with easy access to all local amenities and transport links of both High Street Kensington and Earl's Court with an 24hr Tesco supermarket only 0.1 mile away.

Features

- Two Double Bedrooms
- Two Bathrooms
- Private Balcony
- Air Conditioning
- Resident's Gym, Pool & Sauna
- 24hr Concierge

Pembroke Road,
London, W8



Total area (approx): 91.45 sq m (980 sq. ft)