



Earls Court Road, W8

£3,500,000

A lovely four bedroom end of terrace house arranged over four floors. Moments from Holland Park and local transport, this property is ideal for a family looking to be in the heart of Kensington.

Just off Kensington High Street only moments from popular high street stores including Whole Foods market and other amenities such as the Equinox Fitness club.

Features

- Three Double Bedrooms
- One Single Bedroom
- Two Full Bathrooms
- Banham Alarm System
- Private Off Street Parking
- Kensington High Street Station



Earls Court Road, W8

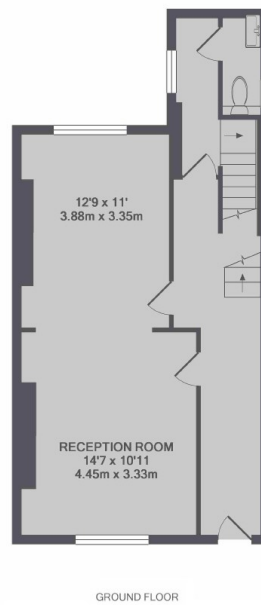
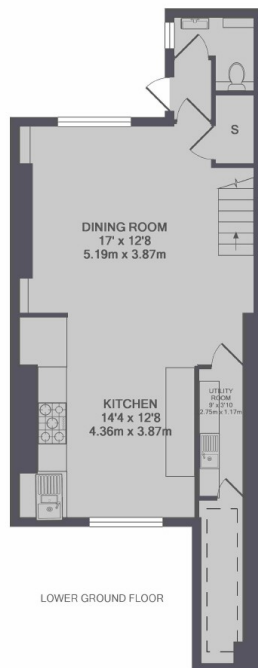
A four bedroom house arranged over four floors with wood flooring. The property comprises of a large double reception room on the raised ground floor, large kitchen with ample dining space (and guest toilet) with access to a private patio on the lower ground floor.

The upper floors comprise of two good sized double bedrooms, study an additional bedroom and family bathroom. The feature of this house is the beautiful master suite boasting double height ceiling with an en-suite bathroom on the first floor.

The home has plenty of storage and lots of natural light. This property also comes with a private parking space making this the perfect Kensington home.



Earls Court Road, London, W8



TOTAL APPROX. FLOOR AREA 2125 SQ.FT. (197.4 SQ.M.)

Dexters

South Kensington
144 Old Brompton Road
London
SW7 4NR
Sales
0207 838 0108

Energy Rating: . We aim to make our particulars both accurate and reliable. However they are not guaranteed; nor do they form part of an offer or contract. If you require clarification on any points then please contact us, especially if you're traveling some distance to view. Please note that appliances and heating systems have not been tested and therefore no warranties can be given as to their good working order.

 **RICS** Regulated
Estate Agent
and Letting Agent

dexters.co.uk