

## Stanhope Gardens, SW7

£1,300,000

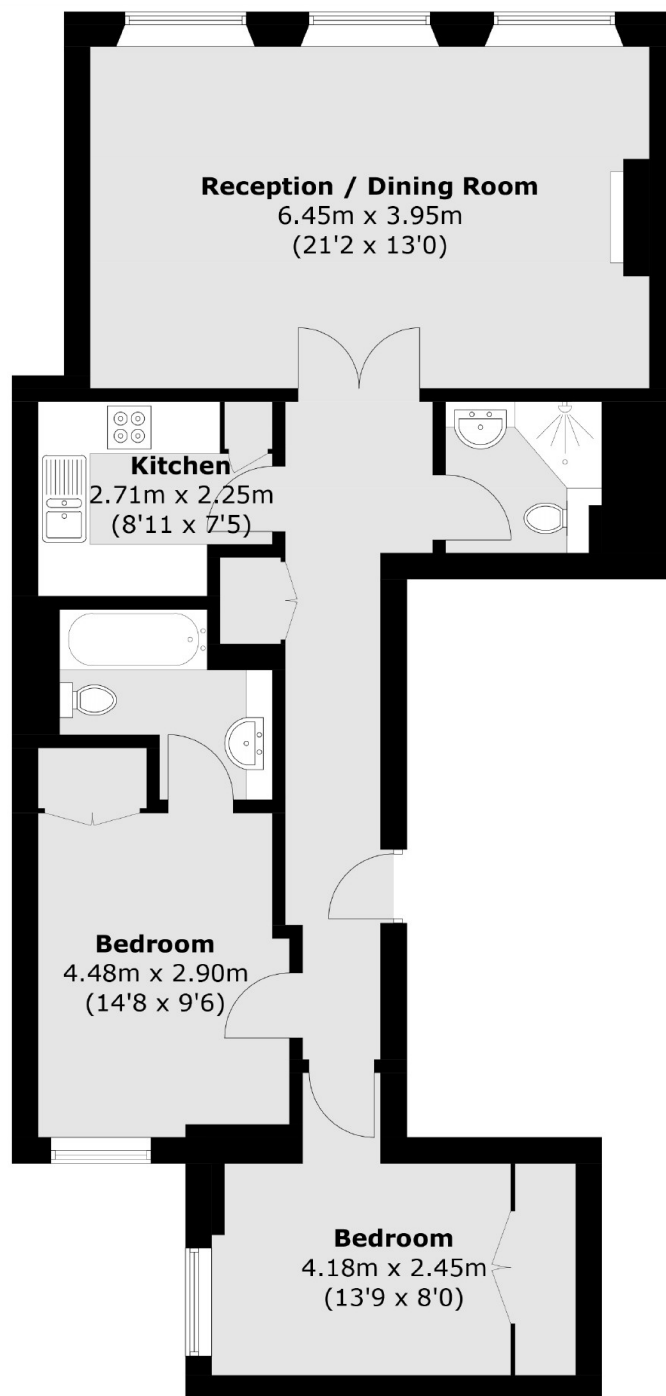
This beautiful lateral two bedroom, two bathroom apartment is located on the fourth floor (with lift) within this well maintained period building. The apartment consists of a separate kitchen, large reception room, two double bedrooms and two bathrooms. The property has added benefits of a 24 hour porter, parking and access to the communal gardens.

Stanhope Gardens is ideally situated in South Kensington, providing an excellent range of shops, bars and restaurants. Also benefiting from excellent transport links, Gloucester Road and South Kensington Underground Stations (Circle, District and Piccadilly lines)

### Features

- Two Bedrooms
- Two Bathrooms
- Private Parking
- 24 Hour Porter
- Separate Kitchen
- Lift

# Stanhope Gardens, London, SW7



Total area (approx.): 77.6 sq. m (835.3 sq. ft)