



## Queen's Gate, SW7

£2,500,000

This three bedroom split-level apartment is situated on the top floor of this period converted property with a lift. The apartment is finished a high standard throughout and includes views over the Natural History Museum.

Queens Gate is a well located tree lined street between South Kensington and Hyde Park. Close to the shops and restaurants in South Kensington including and the museums aren't too far either.

### Features

- Three Bedrooms
- Two Bathrooms
- Long Lease
- Lift
- Top Floor
- Split-Level Apartment



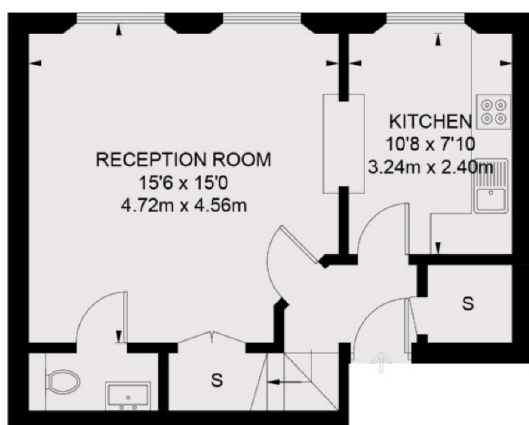
## Queen's Gate, SW7

The property is presented on two levels, on the top two floors on the building. The first floor has wood floor with a semi-open plan kitchen/living area with storage under the stairs and great views.

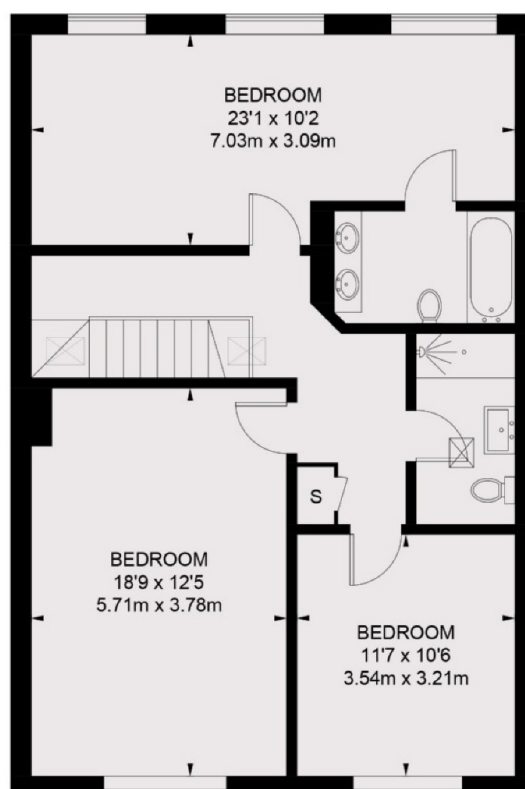
The second floor has three really good sized double bedrooms one with an en-suite and a further family bathroom. The apartment benefits from a huge amount of natural light.



# Queen's Gate, London, SW7



**FOURTH FLOOR**



**FIFTH FLOOR**

TOTAL APPROX. FLOOR AREA 1238 SQ. FT. (115 SQ. M.)