



## Stanhope Gardens, SW7

£865,000

A well maintained two double bedroom flat arranged over the lower ground floor of a Victorian house. Both double bedrooms have en-suites. The property also has 2 private patio areas and naturally light reception and kitchen. The property further benefits from ample of built in storage throughout.

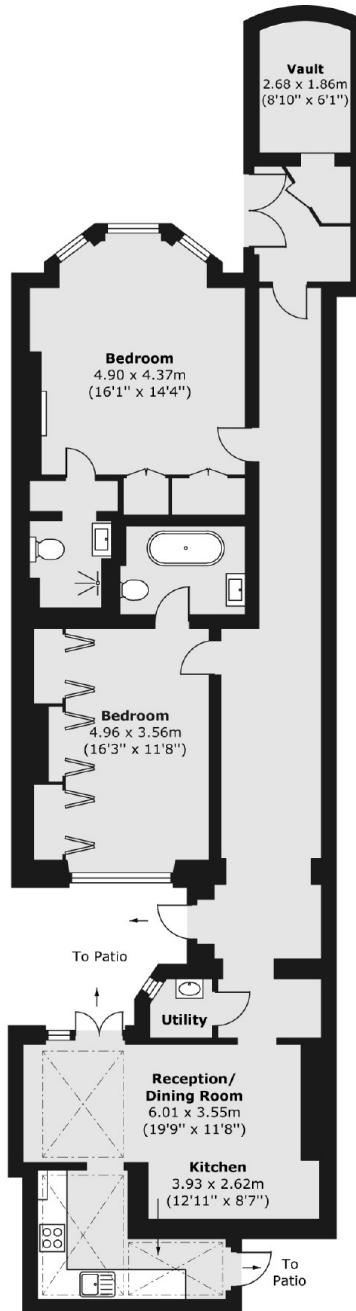
Stanhope Gardens is situated just off Gloucester Road with plenty of restaurants and cafes and amenities. Gloucester Road Underground provides links to the city via the Piccadilly and district.

### Features

- Two Bedrooms
- Two Bathrooms
- Two Private Patios
- Wood Floors
- Excellent Location
- Gloucester Road Station

# Stanhope Gardens, London, SW7

Lower Ground Floor



Total area (approx.) 118.93 sq. m (1,280 sq. ft)

## Dexters

South Kensington  
144 Old Brompton Road  
London  
SW7 4NR

Sales  
0207 838 0108

Energy Rating: D. We aim to make our particulars both accurate and reliable. However they are not guaranteed; nor do they form part of an offer or contract. If you require clarification on any points then please contact us, especially if you're traveling some distance to view. Please note that appliances and heating systems have not been tested and therefore no warranties can be given as to their good working order.

 **RICS** | Regulated  
Estate Agent  
and Letting Agent

[dexters.co.uk](http://dexters.co.uk)