



Cromwell Crescent, SW5

£875,000

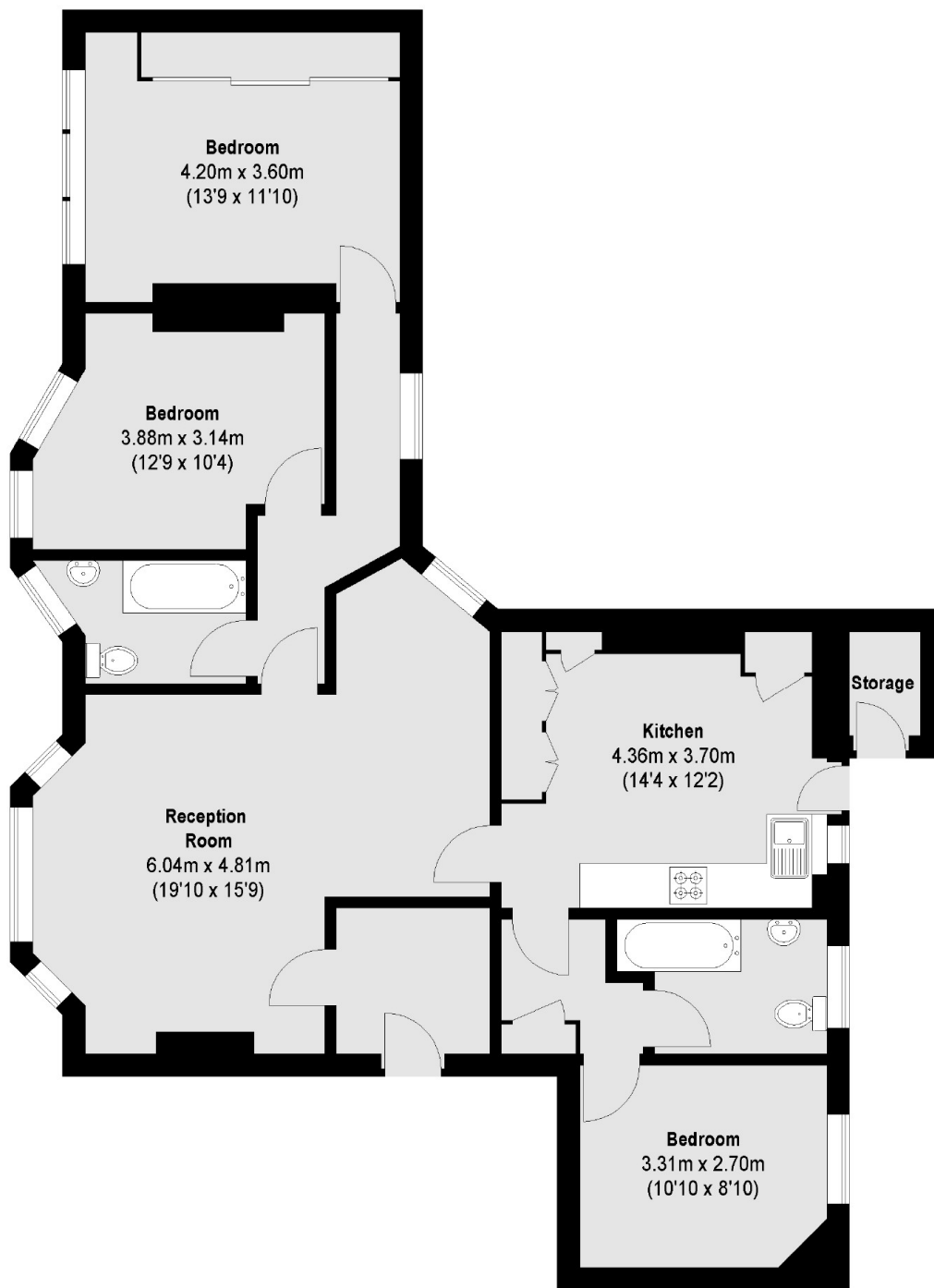
A rear opportunity to acquire a large three bed two bath apartment in the prestigious Warwick Mansions. The property is in need of complete refurbishment and would work perfectly as a family home or but to let investment.

Cromwell Crescent is located with easy access to all local amenities and transport links of both High Street Kensington and Earl's Court.

Features

- Red brick mansion block
- Three Bedrooms
- Long Lease
- Direct Outside Space
- Excellent Location
- Earls Court underground

Cromwell Crescent, London, SW5



Total area (approx.): 103.53 sq. m (1114 Sq. ft)
Storage (approx.): 1.48 sq. m (16 Sq. ft)