



Brompton Square, SW3

£1,485,000

Dexters



Brompton Square, SW3

A bright apartment situated on the raised ground floor of a period townhouse in this conveniently located and highly desirable garden square in the heart of Knightsbridge.

Located on the eastern side of Brompton Square this apartment opens into a bright west facing reception room with open plan kitchen and views of the garden square.

To the rear of the property are two double bedrooms, one of which has access to an en suite shower room whilst the other has use of the family bathroom accessed from the hallway.

Within a comfortable walking distance, you will find the world renowned shops of Knightsbridge, museums of South Kensington and the green open spaces of Hyde Park and Kensington Gardens.

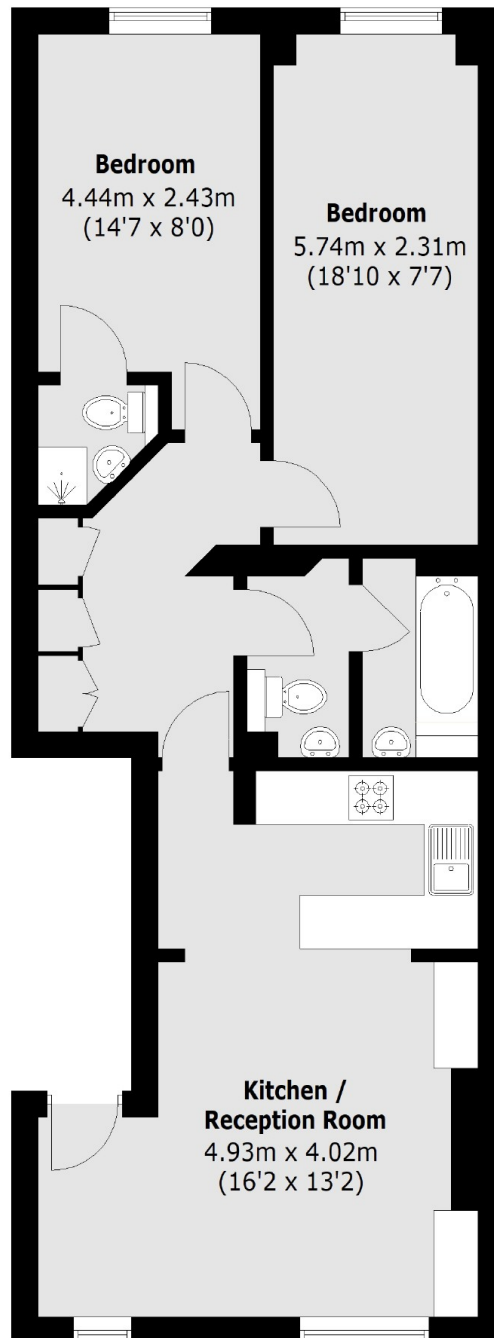
Brompton Square is a very popular garden square with South Kensington being the closest station located west of the property whilst Knightsbridge station is located east and almost equal distance away.

Features

- Raised Ground Floor
- Two Bedrooms
- Two Bathrooms
- West Facing Reception
- Open Plan Kitchen
- South Kensington Station



Brompton Square, London, SW3



Total area (approx.): 65.8 sq. m (708.2 sq. ft)