



Penywern Road, SW5

£485,000

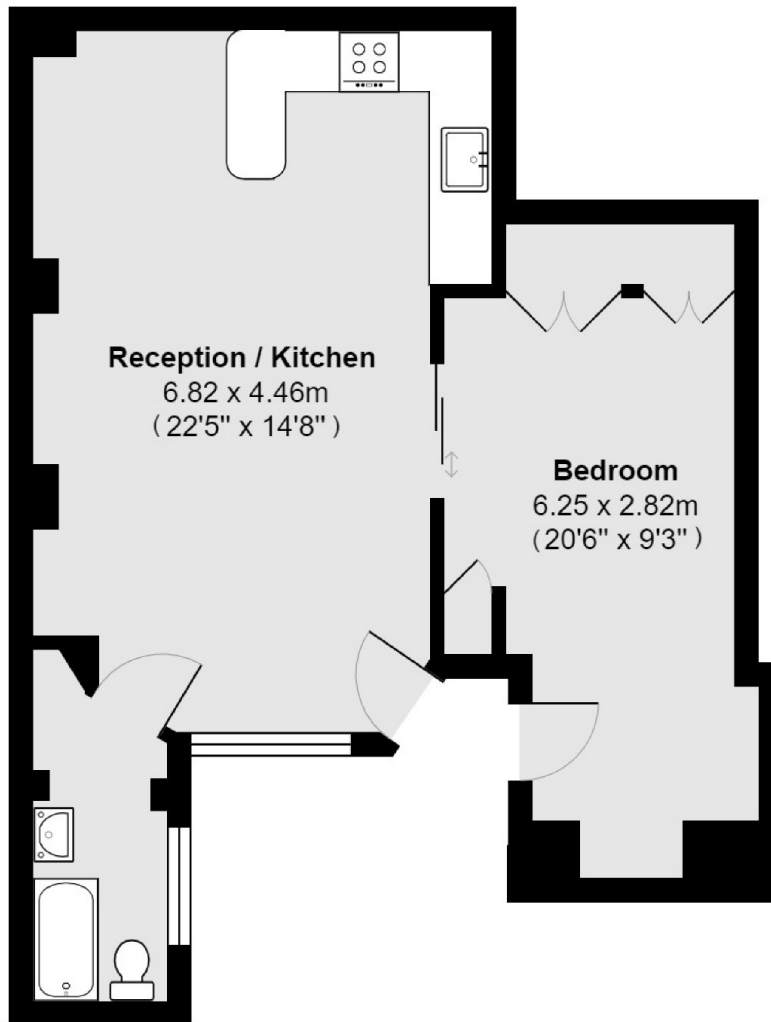
A beautifully presented, well proportioned one bedroom apartment. Entering you walk into the large open plan kitchen reception area with bay window to the front. Off this is a good size double bedroom with plenty of storage, home office space and bathroom. The property further benefits from access to elegant communal garden.

Penywern Road is ideally located close to the shops and restaurants on Earls Court Road including Marks and Spencer, Simply Foods, Byron Burger and Starbucks coffee shop. The closest underground station is Earls Court.

Features

- One Bedroom
- Immaculate Condition
- No Ongoing Chain
- Close To Earls Court
- Underground
- Open Plan Living

Penywern Road, London, SW5



Total area 47.5 sq m (approx) (512 sq ft approx)