



## **Park Mansions, SW1X**

£2,000,000

**Dexters**



## Park Mansions, SW1X

An impressive fourth floor newly renovated flat spanning over 1,000 sqft in the heart of Knightsbridge and moments from Hyde Park.

The property comprises of a welcoming entrance hallway, off which leads a reception room with integrated modern fireplace and built in fitted cabinetry either side and internal courtyard views.

A separate modern kitchen fully fitted and integrated appliances with a breakfast bar. The flat contains two double bedrooms both with en suite and built in wardrobes. The principle bedroom en suite has both a separate bath and shower. The flat also contains a cloakroom off the hallway.

The building is well maintained and has a porter at reception and a lift to the fourth floor.

Park Mansions is located in heart of Knightsbridge surrounded by luxury brand shops and moments from the infamous Harvey Nichols and Harrods. As well as being in close proximity to the green open space of Hyde Park.

### Features

- Two Double Bedrooms
- Two En Suites
- Separate Kitchen/Reception
- Newly Renovated
- Fourth Floor
- Porter With Lift

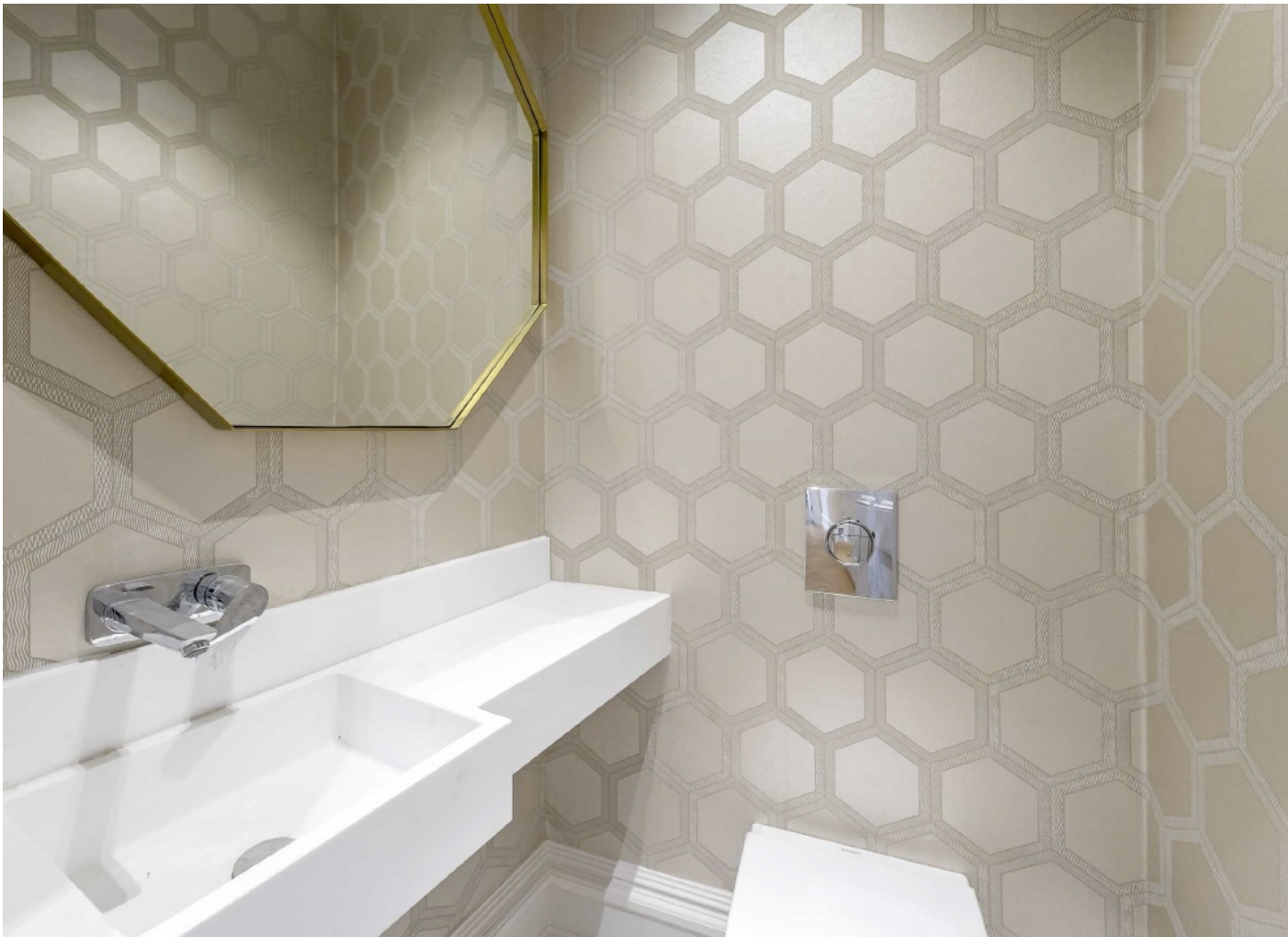




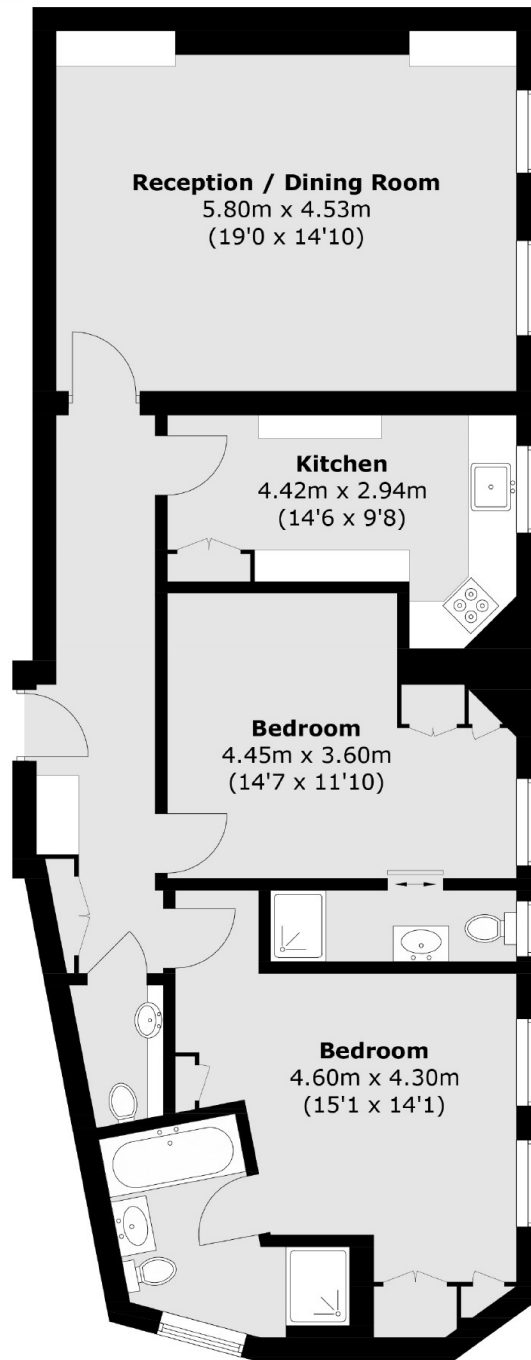








# Park Mansions, London, SW1X



## Fourth Floor

Total area (approx.): 93.1 sq. m (1,002.1 sq. ft)