



Warwick Lane, W14

£3,700,000

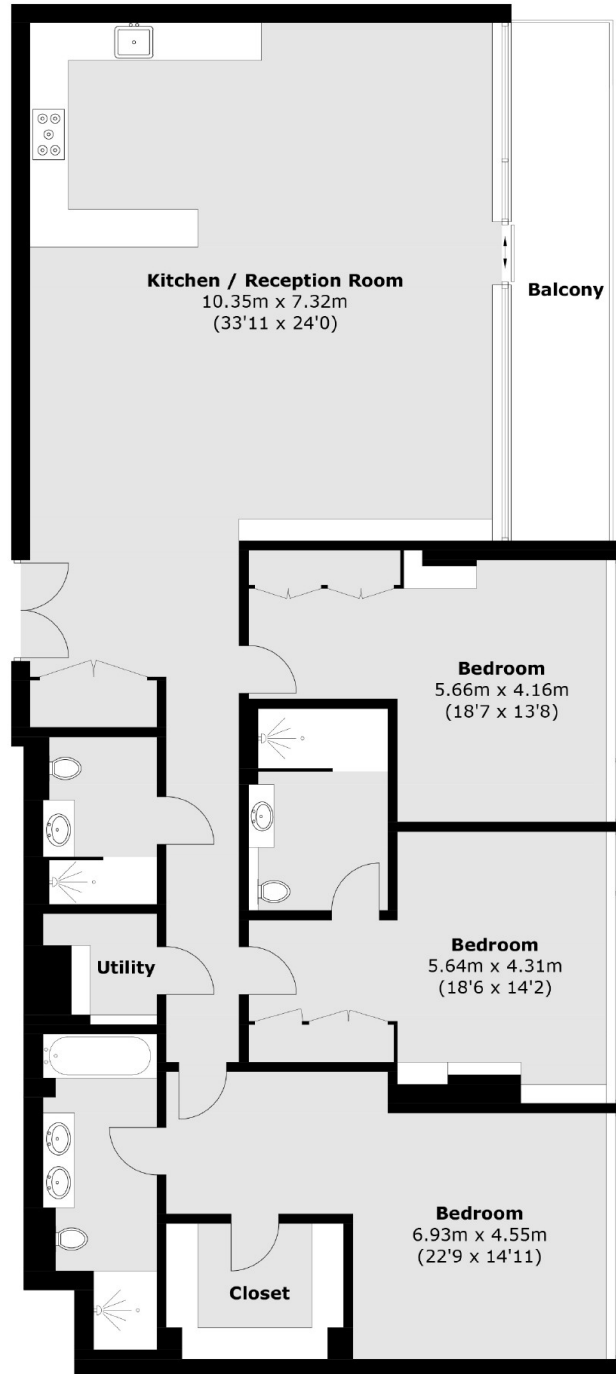
A luxurious three bedroom three bathroom apartment located on the first floor of this prestigious new development by St Edward's. Incorporating the latest home technology, meticulously planned living space with a benefit of a private balcony offers an elegant and timeless home. Exclusive facilities for the residents' use only include a 24 hour concierge, private cinema and leisure suite.

Thomas Earle House location is within close proximity to all amenities of Kensington, Chelsea and Holland Park.

Features

- Three Bedrooms
- Three Bathrooms
- Private Balcony
- First Floor
- Long Lease
- Leisure Suite

Warwick Lane, London, W14



Total area (approx.): 174.4 sq. m (1,877.2 sq. ft)
Balcony: 12.7 sq. m (136.7 sq. ft)