



Collingham Place, SW5

£360,000

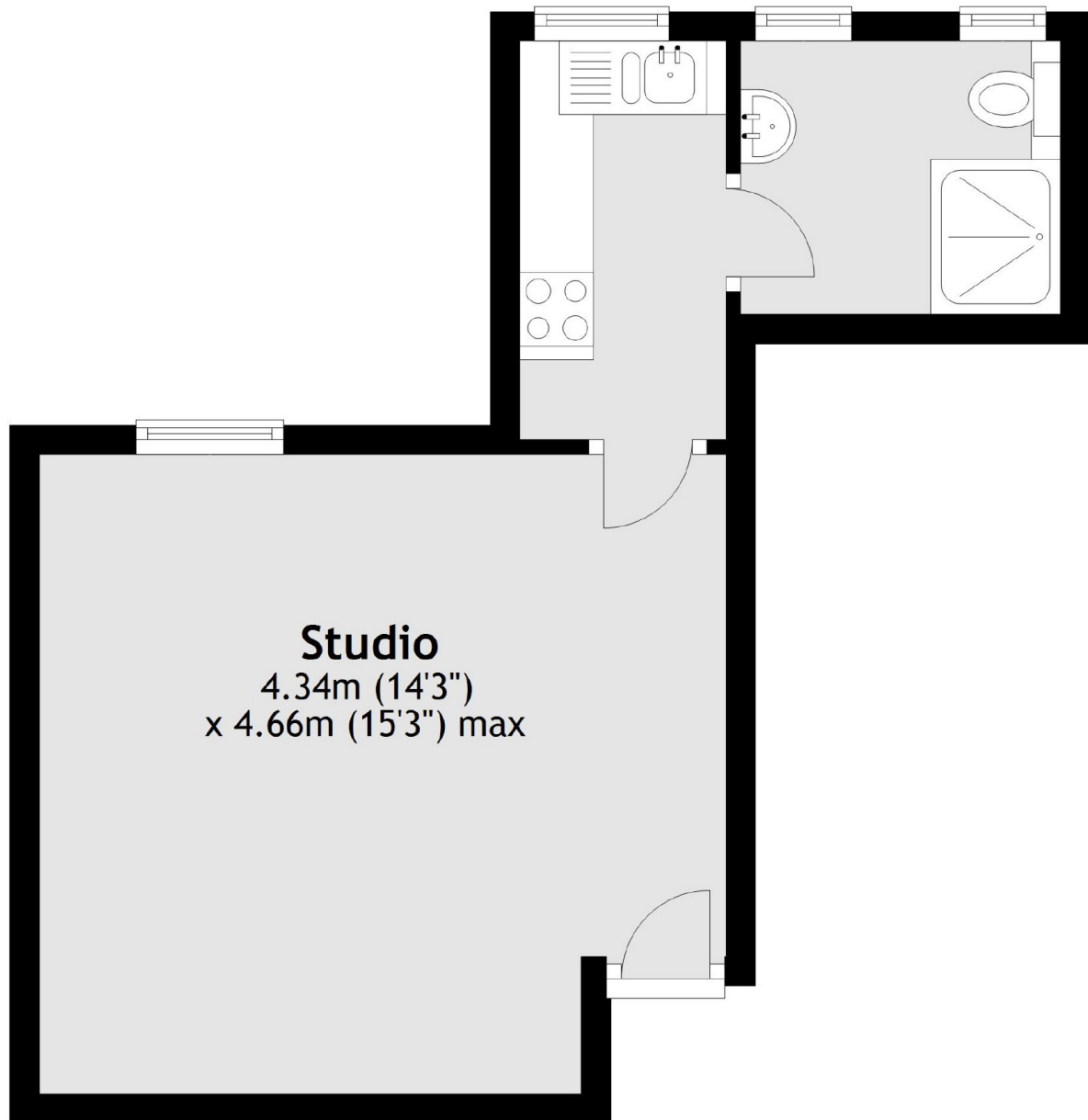
A very well maintained bright and spacious studio apartment, situated on the fourth floor of this period conversion with a separate kitchen.

Collingham Place is ideally located within close proximity to Gloucester Road and Earls Court Stations and all the shops, restaurants and amenities on offer. Easy access on to the A4/M4 towards Heathrow and near the green open spaces of Kensington Gardens and Holland Park.

Features

- Large Studio
- Period Conversion
- Separate Kitchen
- Gloucester Road Tube
- Share Of Freehold
- Close to Amenities

Collingham Place, London, SW5



Total area: approx. 27.4 sq. metres (295.3 sq. feet)