



## Old Brompton Road, SW5 £900,000

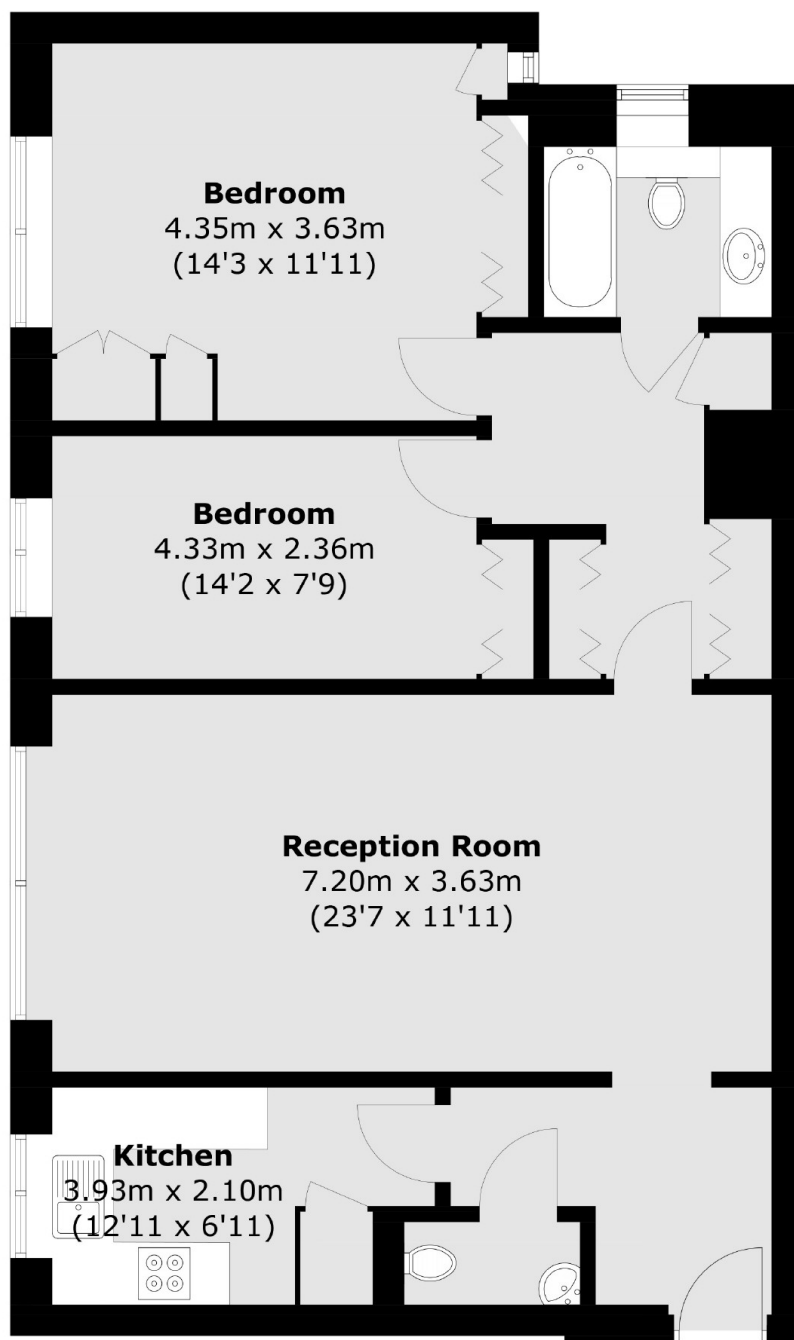
A very nicely finished lateral apartment on the third floor (with lift) and porter. With two double bedrooms, separate bathroom and large reception room. The property has ample of storage and also benefits from a separate kitchen and additional w/c.

Beatrix House is located on Old Brompton Road, near to all the amenities that Earl's Court has to offer, whilst the popular bars and restaurants on Hollywood Road are also not too far.

### Features

Third Floor  
Two Double Bedrooms  
Lift  
Porter  
Separate Kitchen  
Earls Court Station

# Old Brompton Road, London, SW5



## Third Floor

Total area (approx.): 85.0 sq. m (914.9 sq. ft)