



Emperors Gate, SW7

£1,700 Per week

A fantastic three bedroom lateral apartment on the third floor of a period conversion with parquet wood flooring throughout and an impressive eat-in kitchen.

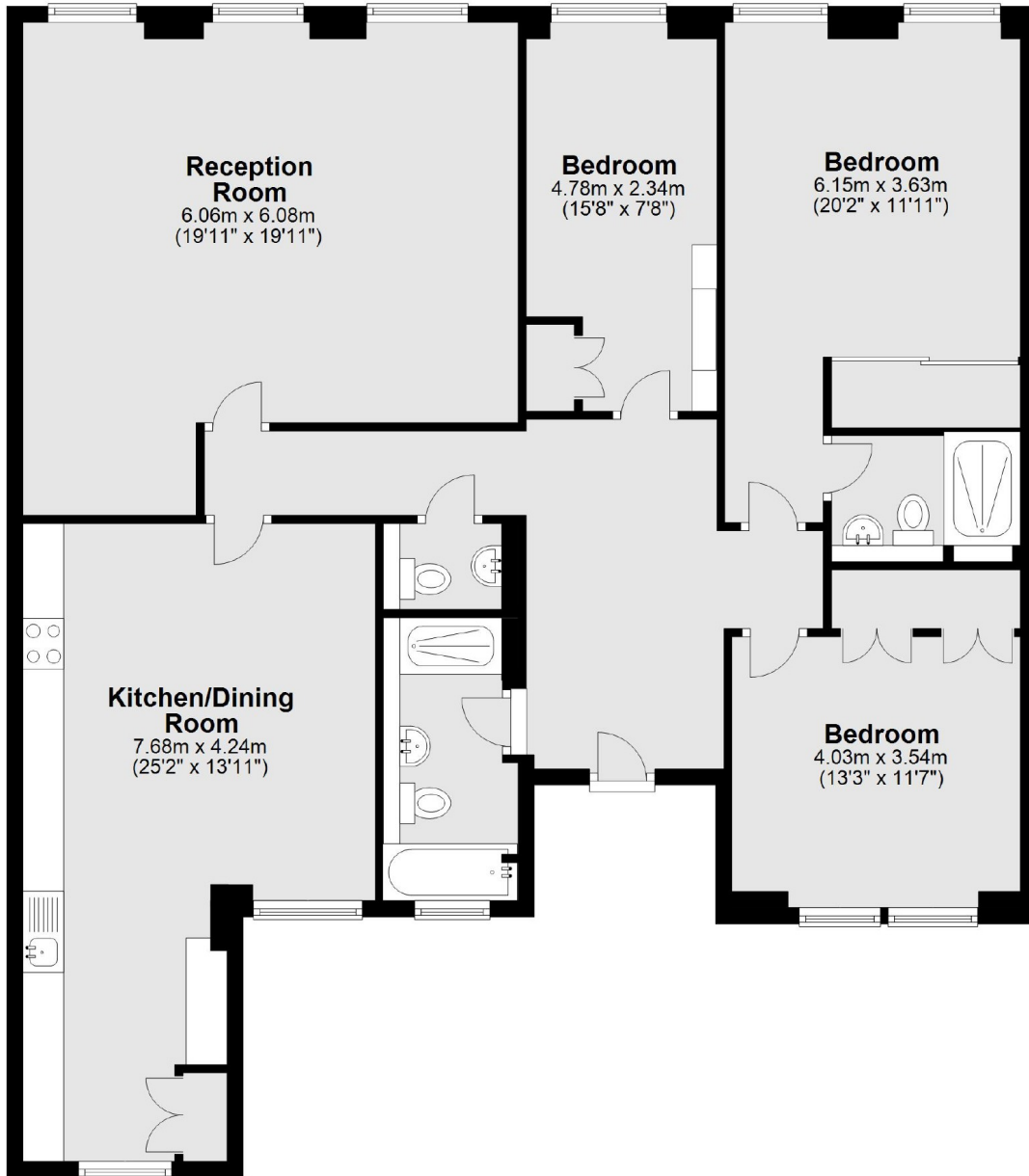
Hyde Park and Kensington Gardens are nearby along with The Natural History Museum and V&A. Gloucester Road is the closest underground station.

Features

- Three Bedrooms
- Three Bathrooms
- Parquet Wood Flooring
- Brand New Refurbishment
- Huge Eat-In Kitchen
- Excellent Location

Emperors Gate, London, SW7

Third Floor



Total area: approx. 136.3 sq. metres (1466.6 sq. feet)