



Onslow Gardens, SW7

£1,845 Per week

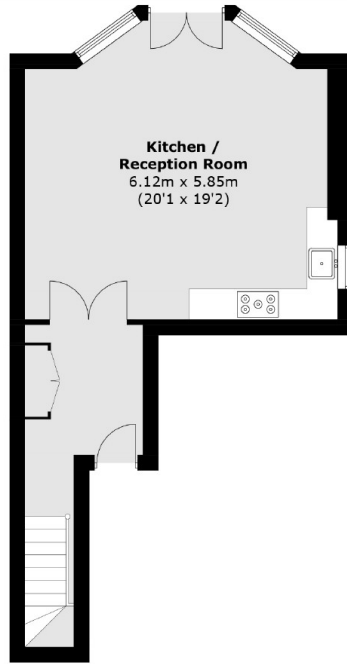
This three bedroom property split over two floors has gone through an extensive refurbishment prior to reaching the market. Interior designed and direct access to the communal gardens means that this property is a welcome addition to the market.

Onslow Gardens is one of South Kensington's garden squares and offers a fantastic location when one is looking for an array of excellent shops and eateries close by. The nearest underground station is South Kensington (Piccadilly, District and Circle lines).

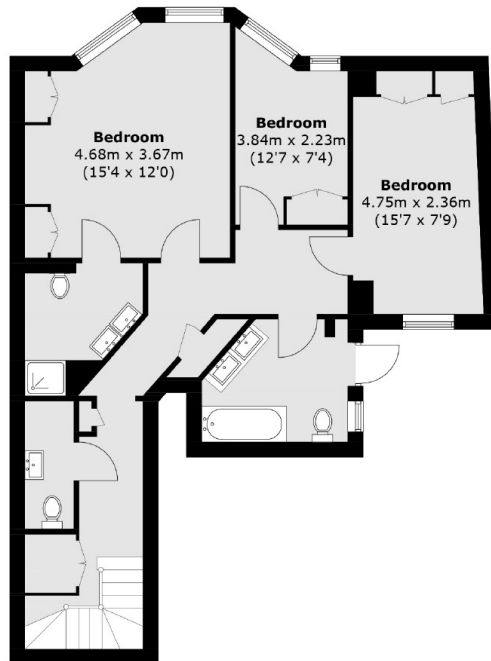
Features

- Three Bedrooms
- Two Bathrooms
- Split Levels
- Fitted Storage
- Interior Designed
- Communal Garden Access

Onslow Gardens, London, SW7



Ground Floor



Lower Ground Floor

Total area (approx.): 111.3 sq. m (1,198.9 sq. ft)