



## Iverna Gardens, W8

£650,000

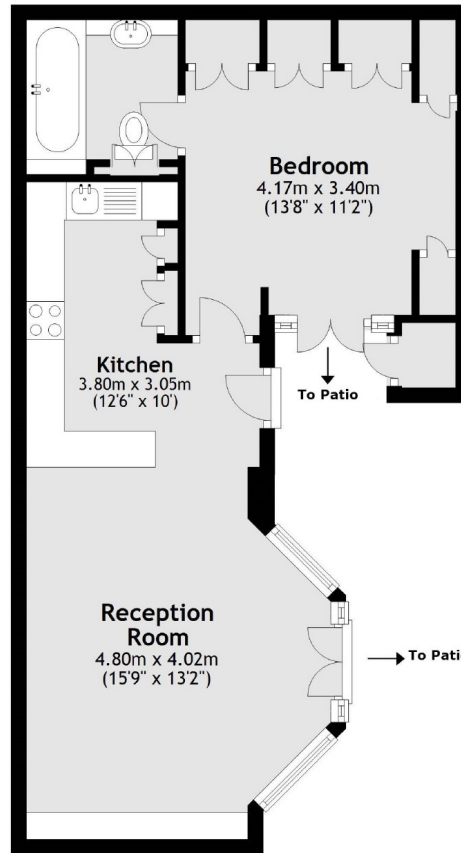
A spacious one double bedroom apartment located on the lower ground floor of a period conversion which offers scope for improvement giving the incoming buyer the opportunity to create a fantastic home or pied-a-terre in prime central Kensington.

Kensington has many attractions including Kensington Gardens, Holland Park and many varied restaurants and shops catering to its international residents. Iverna Gardens is a quiet street about 175 yards from High Street Kensington, which offers excellent transport links having a Tube station, and numerous bus routes into the West End and City of London and out towards Hammersmith and beyond.

### Features

- One Bedroom
- En-suite Bathroom
- Private South Facing Patio
- Long Lease
- Access To Communal Garden
- Great Transport Links

# Iverna Gardens, London, W8



Main area: Approx. 45.4 sq. metres (488.9 sq. feet)  
Plus storage, approx. 0.6 sq. metres (6.6 sq. feet)