



Drayton Gardens, SW10

£2,075 Per week

This is a spacious five bedroom flat on the second floor of a period conversion situated on the desirable street of Drayton Gardens.

Located at the centre of London, Chelsea is where some of the capital's most prestigious addresses are located. Living here offers a lifestyle that is hard to replicate in other central London locations.

Features

- Five Bedrooms
- Lateral Flat
- Mansion Building With Lift
- Second Floor
- Wood Floors
- Balcony

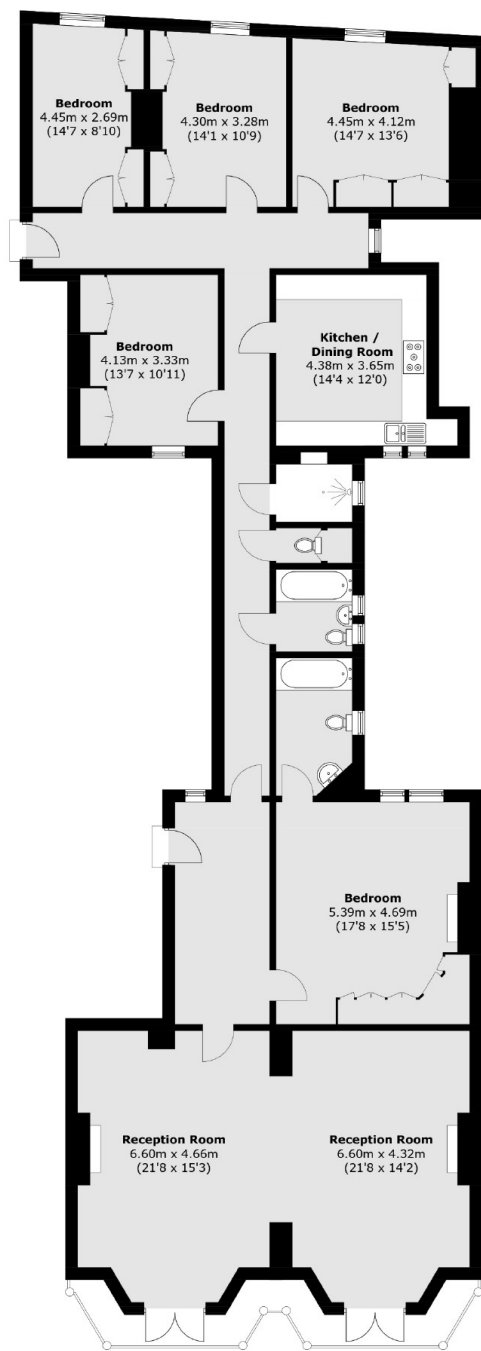


Drayton Gardens, SW10

This spacious and well presented lateral flat is on the second floor of a desirable period conversion in Chelsea. Accommodation comprises a double fronted reception room/dining room, separate kitchen fitted with integrated appliances, five bedrooms all with fitted wardrobe space and three bathrooms (one en-suite). The property further benefits from a balcony.



Drayton Gardens, London, SW10



Second Floor

Total area (approx.): 211.9 sq. m (2,280.7 sq. ft)
External Area : 8.7 sq. m (93.6 sq. ft)

Dexters

South Kensington
144 Old Brompton Road
London
SW7 4NR
Lettings
020 7244 7711

Energy Rating: C. We aim to make our particulars both accurate and reliable. However they are not guaranteed; nor do they form part of an offer or contract. If you require clarification on any points then please contact us, especially if you're traveling some distance to view. Please note that appliances and heating systems have not been tested and therefore no warranties can be given as to their good working order.

 **RICS** | Regulated
Estate Agent
and Letting Agent

[dexters.co.uk](https://www.dexters.co.uk)