



## Ifield Road, SW10

£330,000

A studio flat located on the raised ground floor. Comprising on a welcoming entrance hallway leading into an open plan studio with high ceilings and a separate shower room.

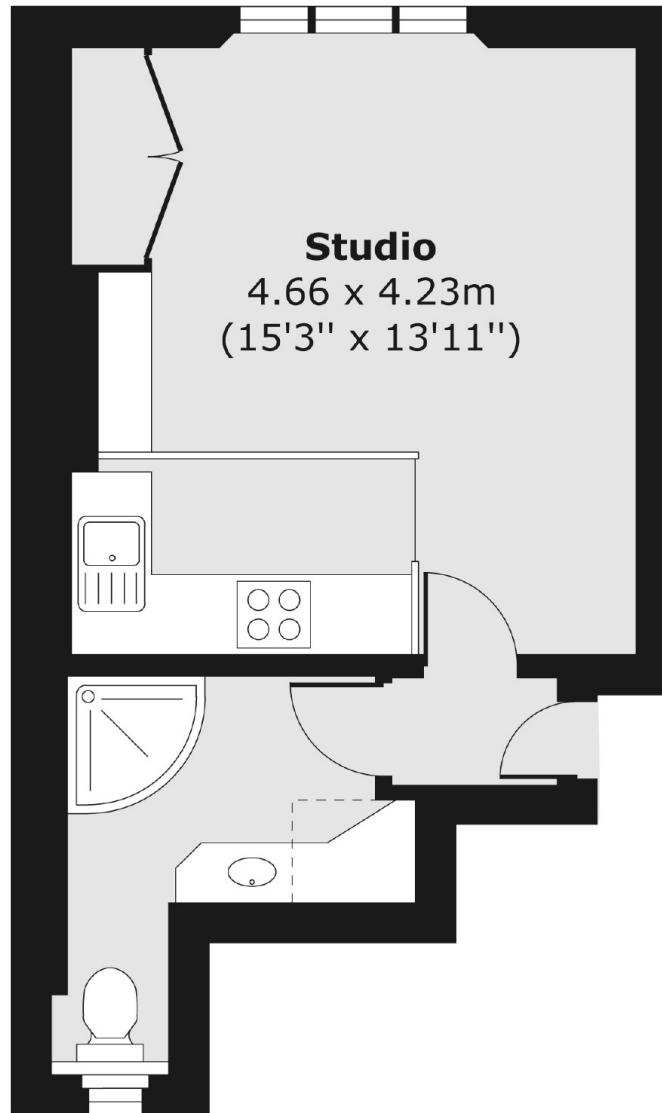
Ifield Road is in a prime location close to both Fulham Broadway, Imperial Wharf and West Brompton stations. The local shops and amenities that Fulham Broadway, Fulham Road and Kings Road have to offer are near by.

### Features

- Open Plan Studio Flat
- Raised Kitchen
- Ample Storage
- Raised Ground Floor
- Long Leasehold
- Shower Room

**Ifield Road,  
London, SW10**

**Ground Floor**



**Total area (approx.) 26.40 sq. m (284 sq. ft)**