



Kempsford Gardens, SW5

£830,000

An immaculate and tastefully decorated two double bedroom lower ground floor flat benefitting from being bright throughout and having its own private outside courtyard.

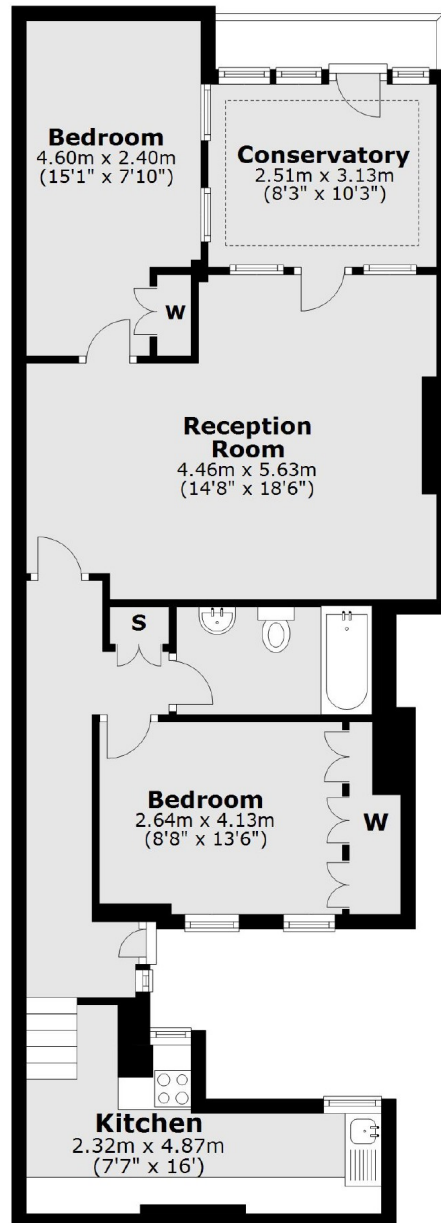
Kempsford Gardens is an attractive and conveniently located tree-lined crescent, located just off Old Brompton Road and close to Earls Court and West Brompton stations, with easy access to the A4/M4.

Features

- Two Double Bedrooms
- Immaculate Condition
- Two Reception Rooms
- Own Front Door
- Small Private Courtyard
- Share Of Freehold

Kempsford Gardens, London, SW5

Lower Ground Floor



Total area: approx. 75.1 sq. metres (808.7 sq. feet)

Contact

To arrange a viewing call our office on the number below or visit our website.



Energy Rating: D. We aim to make our particulars both accurate and reliable. However they are not guaranteed; nor do they form part of an offer or contract. If you require clarification on any points then please contact us, especially if you're traveling some distance to view. Please note that appliances and heating systems have not been tested and therefore no warranties can be given as to their good working order.