



Old Brompton Road, SW5

£775,000

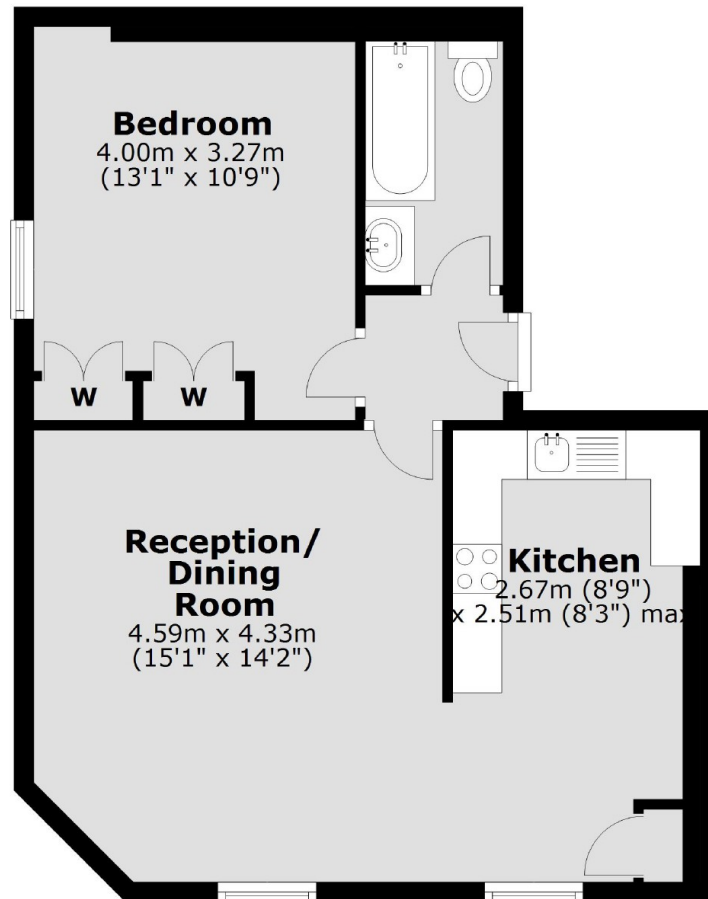
An immaculate second floor one double bedroom flat. Consisting of an entrance hallway, bedroom, bathroom and semi open plan kitchen living room large enough for separate reception area and dining space.

Located on the corner Old Brompton Road and Gledhow Gardens, with access to many shops, restaurants, bars and local amenities at your door step. For transport you are within close proximity to both South Kensington and Gloucester Road.

Features

One Double Bedroom
Contemporary Finish
Second Floor Flat
Brand New Leasehold
Gloucester Road Station
Semi Open Plan

Old Brompton Road, London, SW5



Second Floor

Total area: approx. 50.1 sq. metres (538.8 sq. feet)

Contact

To arrange a viewing call our office on the number below or visit our website.



Energy Rating: D. We aim to make our particulars both accurate and reliable. However they are not guaranteed; nor do they form part of an offer or contract. If you require clarification on any points then please contact us, especially if you're traveling some distance to view. Please note that appliances and heating systems have not been tested and therefore no warranties can be given as to their good working order.