



Clareville Street, SW7

£1,650,000

A two bedroom mews house in the heart of South Kensington split over three floors and benefitting from a roof terrace.

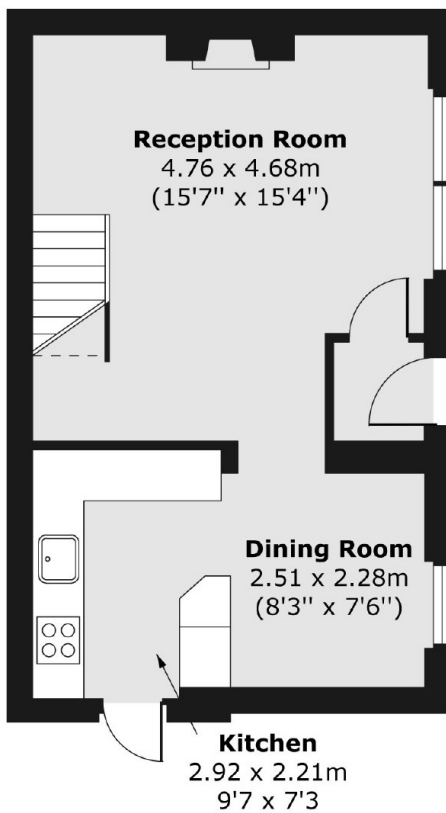
Clareville Street is located off Old Brompton Road, between South Kensington and Gloucester Road station. Benefitting from all the boutiques shops, restaurants and local amenities that both areas have to offer.

Features

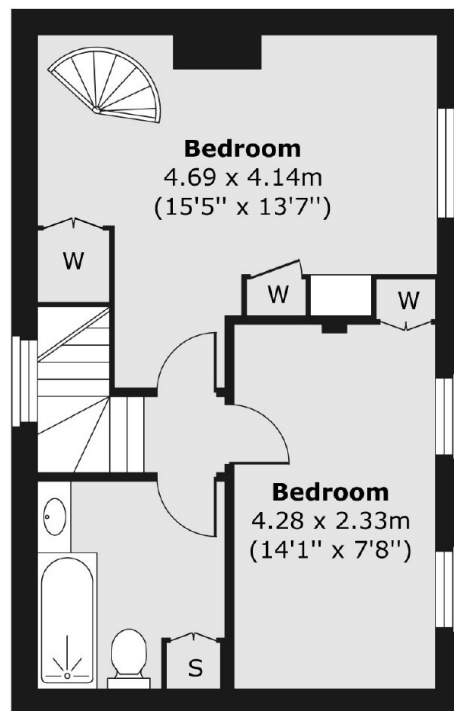
- Freehold Mews House
- Two Bedrooms
- One Bathroom
- Garden Room
- Roof Terrace
- Three Floors

Clareville Street, London, SW7

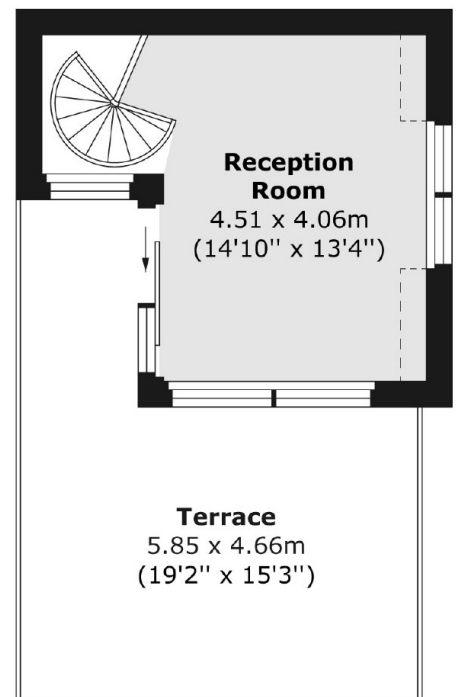
Ground Floor



First Floor



Second Floor



Total area (approx.) 86.47 sq. m (931 sq. ft)

Terrace area (approx.) 19.29 sq. m (208 sq. ft)

Contact

To arrange a viewing call our office on the number below or visit our website.



Energy Rating: D. We aim to make our particulars both accurate and reliable. However they are not guaranteed; nor do they form part of an offer or contract. If you require clarification on any points then please contact us, especially if you're traveling some distance to view. Please note that appliances and heating systems have not been tested and therefore no warranties can be given as to their good working order.