



Trinity Road, Chipping Norton

Guide price £259,995



Leasehold | EPC rating: C

- FIRST FLOOR APARTMENT
- HALLWAY WITH STORAGE
- WET/SHOWER ROOM

- LIGHT & BRIGHT ACCOMMODATION
- DOUBLE BEDROOM
- ON SITE BISTRO

King & Woolley
Estate Agents and Surveyors

Email
chippingnorton@kingandwoolley.com

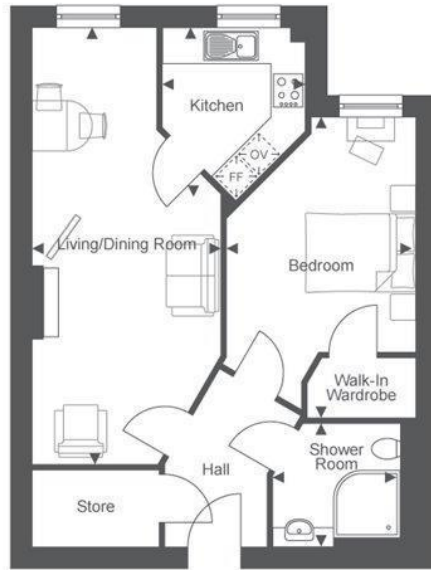
Phone
01608 642111



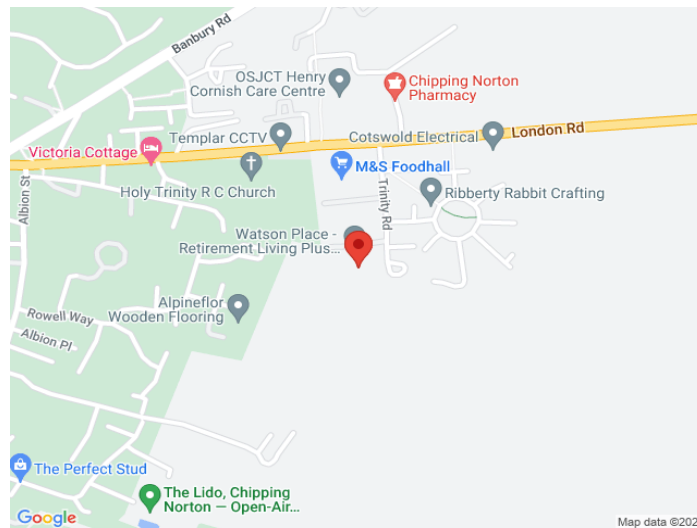
A LIGHT & BRIGHT ONE BEDROOM FIRST FLOOR RETIREMENT APARTMENT WITH ACCESS TO A WIDE RANGE OF ON SITE FACILITIES OFFERING A CONVENIENT ACCESS TO THE TOWN CENTRE.

SECURE COMMUNAL RECEPTION, LOUNGE & RESTAURANT OPENING TO SOUTH FACING TERRACE & GARDENS, BISTRO, WELL BEING SUITE, LAUNDRY, LIFT ACCESSING ALL FLOORS, PRIVATE FRONT DOOR & HALLWAY, WITH BUILT IN STORAGE, LARGE DOUBLE ASPECT OPEN PLAN RECEPTION, MODERN INTEGRATED KITCHEN, DOUBLE BEDROOM WITH WALK IN WARDROBE, SHOWER/WET ROOM, MODERN ELECTRIC HEATING, DOUBLE GLAZING, 24 HOUR EMERGENCY CALL OUT FACILITY. SITUATION: WITHIN A SHORT WALK OF M&S FOOD HALL, OXFORD BUS STOP, COMMUNITY HOSPITAL + SHUTTLE SERVICE INTO THE TOWN CENTRE.

The bustling historic wool town of Chipping Norton is situated on the edge of the Cotswold Hills between the University City of Oxford, Spa town of Cheltenham & Shakespeare's Stratford upon Avon. It has an eclectic range of shopping, social and business facilities including an excellent local theatre, sports centre with indoor pool, lido and a recently constructed Community Hospital + Health Centre. A Station on the Paddington to Worcester rail line can be found at nearby Kingham in addition to a regular bus service from Chipping Norton to Oxford.



Living/Dining Room	25' 1" x 10' 10"	7648mm x 3297mm
Kitchen	9' 11" x 8' 1"	3032mm x 2473mm
Shower Room	7' 5" x 7' 1"	2247mm x 2147mm
Bedroom	17' 3" x 10' 10"	5263mm x 3305mm



King & Woolley

6 New Street
 Chipping Norton
 Oxfordshire
 OX7 5LJ
 01608 642111
 chippingnorton@kingandwoolley.com

