

Lynford Gardens, Seven Kings, Essex, IG3

FOR SALE: £574,999.00
FREEHOLD



Anistenhomes is a trading name of Maya Residential London Ltd on behalf of itself as agents for the vendors/lessor of this property upon whose instructions these particulars are specifically drafted give notice that: (i) These property particulars are produced in good faith and do not constitute or form part of any contract. (ii) No employee of Anistenhomes has any authority to make or give any representation or warranty in relation to this property. (iii) All measurements are approximate and believed to be accurate with in 6in./150mm. Any appliances or services mentioned in these particulars has not been tested. Registered Office: 369 Green Lane, Seven Kings, Essex IG3 9TQ | Registered in England No: 08355088 | VAT Reg No: 162 7213 25

Anistenhomes is a trading name of Maya Residential London Ltd.
 Registered Office: 369 Green Lane, Seven Kings, Essex IG3 9TQ | Registered in England No: 08355088 | VAT Reg No: 162 7213 25

Property Features

- Three Good Sized Bedrooms
- Three Spacious Receptions
- Separate Kitchen/Diner
- Ground Floor Bathroom
- Double Glazing & Gas Central Heating
- Private Rear Garden
- Free Parking on Street
- Local Shops & Amenities Nearby

Full Description

AnistenHomes are pleased to present this spacious, mid-terraced family home. Situated near the popular Seven Kings Bungalow Estate. We recommend an immediate enquiry to avoid disappointment. The accommodation comprises: Three reception rooms, modern fitted kitchen, three bedrooms, two family bathrooms. Other features include double glazing, gas central heating and a good size rear garden with an outhouse.

Property Key Features:

- Three Bedroom House
- Mid-Terraced
- On Street Parking
- Three Separate Receptions
- Large Through Lounge
- Ground Floor Shower Room
- First Floor Family Bathroom
- Good Sized Bedrooms
- Modern Fitted Kitchen
- Rear Outhouse/Shed
- Easy To Maintain Garden
- Vacant Possession
- Double Glazed
- Gas Central Heating

Viewings highly recommended, Call AnistenHomes to book the next available appointment slot.



Room Sizes:

RECEPTION ROOM

16' 0" x 13' 9" (4.88m x 4.19m)

RECEPTION ROOM

16' 9" x 10' 9" (5.11m x 3.28m)

RECEPTION ROOM

16' 9" x 10' 1" (5.11m x 3.07m)

KITCHEN/DINER

20' 8" x 6' 9" (6.3m x 2.06m)

GROUND FLOOR SHOWER

4' 6" x 3' 6" (1.37m x 1.07m)

FIRST FLOOR FAMILY BATHROOM

6' 0" x 4' 0" (1.83m x 1.22m)

BEDROOM

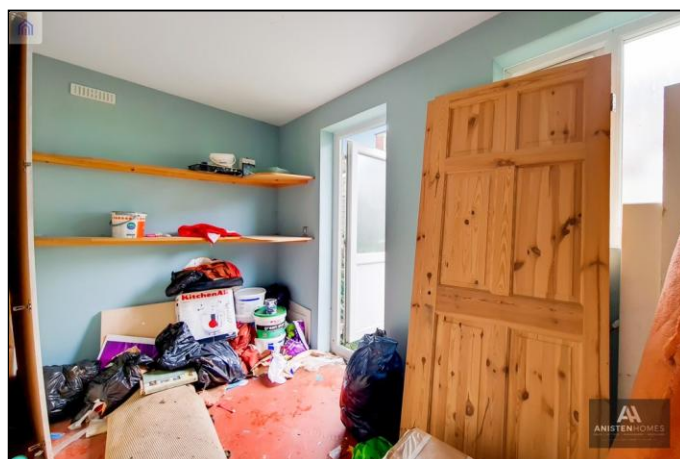
15' 10" x 13' 6" (4.83m x 4.11m)

BEDROOM

13' 0" x 11' 2" (3.96m x 3.4m)

BEDROOM

8' 0" x 7' 0" (2.44m x 2.13m)



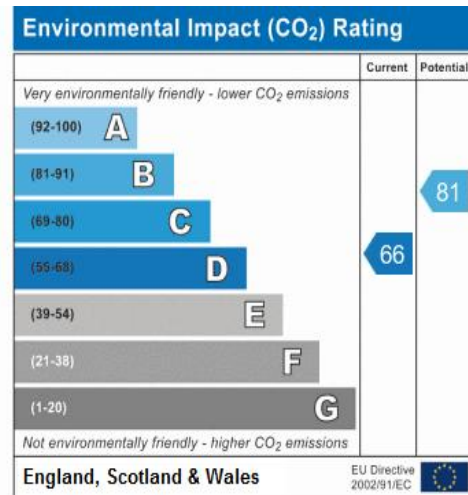
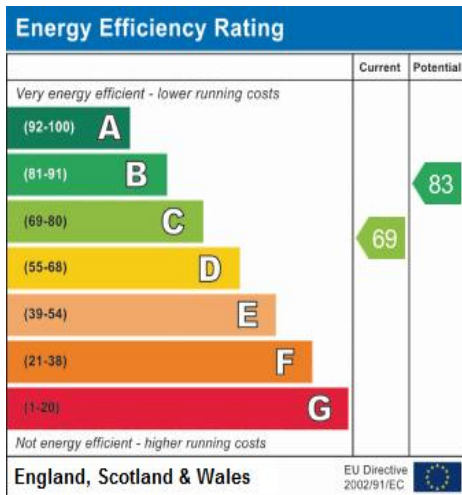


Lynford Gardens, IG3

CAPTURE DATE 10/11/2021 LASER SCAN POINTS 8,812,136

GROSS INTERNAL AREA

152.68 sqm / 1643.43 sqft



369 Green Lane
Seven Kings
Essex
IG3 9TQ

www.anistenhomes.co.uk
info@anistenhomes.co.uk
0208 599 0061

Agents Note: Whilst every care has been taken to prepare these sales particulars, they are for guidance purposes only. All measurements are approximate and for general guidance purposes only and whilst every care has been taken to ensure their accuracy, they should not be relied upon and potential buyers are advised to recheck the measurements