

Rounthwaite **R&W** Woodhead

53 MARKET PLACE, MALTON, NORTH YORKSHIRE, YO17 7LX Tel: (01653) 600747



3 HALL FARM COTTAGES MAIN STREET, HOVINGHAM, YO62 4JS

£850 PER MONTH

Also at: 26 Market Place, Kirkbymoorside Tel: (01751) 430034 & Market Place, Pickering Tel: (01751) 472800

Email: malton@rounthwaite-woodhead.co.uk www.rounthwaite-woodhead.com

Description

A two bedroom terraced property in the beautiful, sought after village of Hovingham. This two bedroom link terraced property has a fitted kitchen, log burning stove and electric heating. There is an enclosed garden and car parking space to the rear.

GROUND FLOOR:

Fitted kitchen with small dining area. The kitchen has space for a dishwasher, cooker and there is a pantry with space for a washer/dryer.

The lounge has a log burning stove, creating a cosy, peaceful space overlooking the rear garden.

FIRST FLOOR

There are two bedrooms to the first floor, one double & one single. The family bathroom has a bath with shower over, wash basin & w.c.

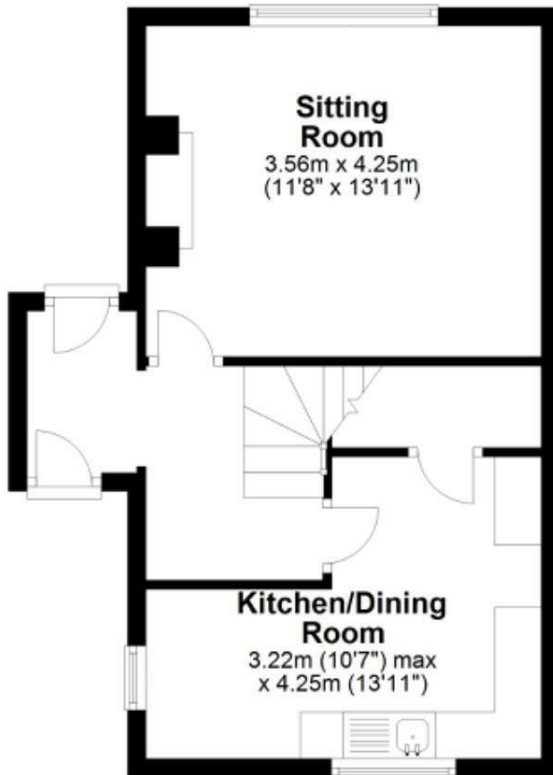
General Information



Accommodation

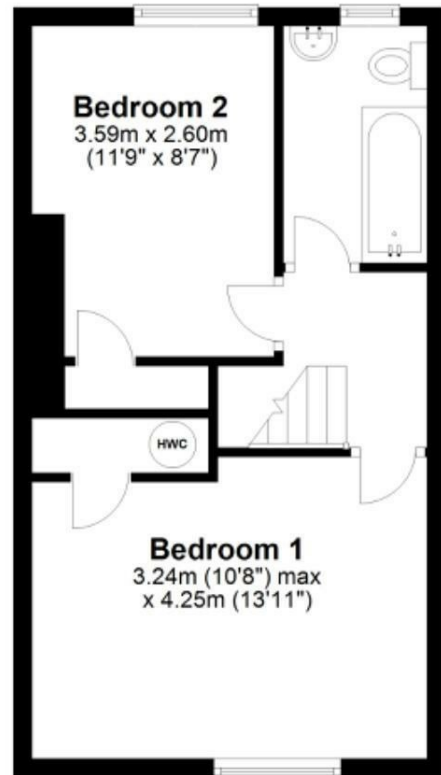
Ground Floor

Approx. 35.7 sq. metres (384.8 sq. feet)



First Floor

Approx. 33.5 sq. metres (360.7 sq. feet)



Total area: approx. 69.3 sq. metres (745.5 sq. feet)

3 Hall Farm Cottages, Hovingham

Energy Efficiency Rating		
	Current	Potential
Very energy efficient - lower running costs		
(92 plus) A		
(81-91) B		
(69-80) C		
(55-68) D		
(39-54) E		
(21-38) F		
(1-20) G		
Not energy efficient - higher running costs		
	44	
England & Wales		
EU Directive 2002/91/EC		

Environmental Impact (CO ₂) Rating		
	Current	Potential
Very environmentally friendly - lower CO ₂ emissions		
(92 plus) A		
(81-91) B		
(69-80) C		
(55-68) D		
(39-54) E		
(21-38) F		
(1-20) G		
Not environmentally friendly - higher CO ₂ emissions		
England & Wales		
EU Directive 2002/91/EC		



Messrs Rounthwaite & Woodhead for themselves and their vendors and lessors whose agents they are give notice that these particulars are produced in good faith, set out as a general guide only and do not constitute any part of a contract. No person employed by Messrs Rounthwaite & Woodhead has any authority to make or give any representation or warranty whatsoever in relation to this property. The dimensions in the sales particulars are approximate only and the accuracy of any description cannot be guaranteed. Reference to machinery, services and electrical goods does not indicate that they are in good or working order. All reference to prices and rents etc. exclude VAT which may apply in some cases.

Covering Ryedale through offices in Malton, Pickering and Kirkbymoorside

www.rounthwaite-woodhead.com

Rounthwaite **R&W** Woodhead