

**ehB**  
RESIDENTIAL

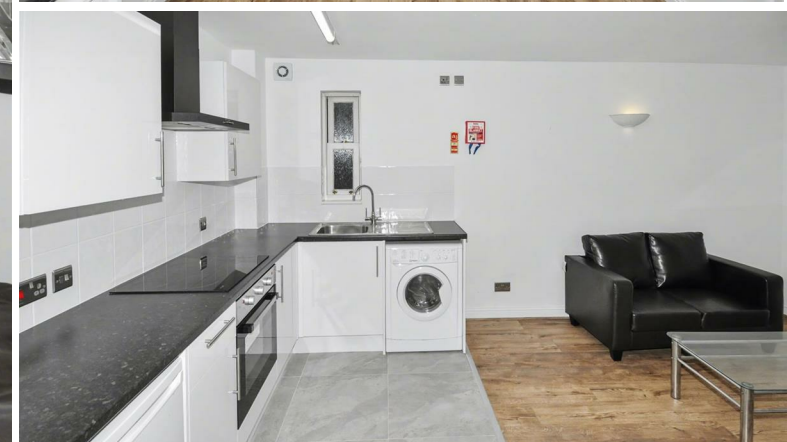
Your Property - Our Business



**Flat 4, 2, Kilworth House, Windsor Street, Leamington Spa**

**£1,025 Per  
Calendar Month**





A newly refurbished, one bedroom, ground floor Apartment situated in the Town Centre.

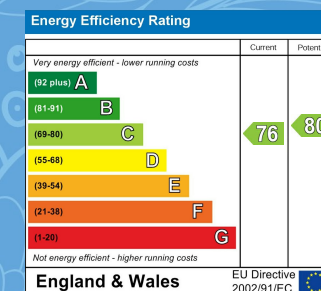


Your Property - Our Business

- Residential Estate Agents •
- Lettings and Property Managers •
- Land and New Homes Agents •

Leamington Spa Office  
Somerset House  
Clarendon Place  
Royal Leamington Spa  
CV32 5QN

01926 881144 • [ehbresidential.com](http://ehbresidential.com)



Also at: Warwick, 17-19 Jury St, Warwick CV34 4EL