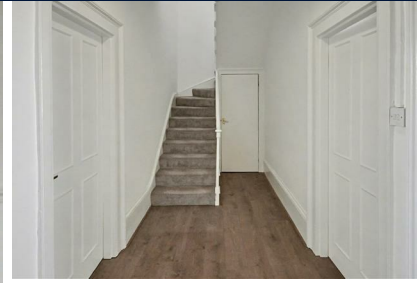


A spacious duplex three double bedroom apartment within the heart of Leamington Spa. Situated on the main Parade and accessed off Tavistock Street this apartment offers spacious and contemporary accommodation whilst retaining period features of high ceilings and ample accommodation.

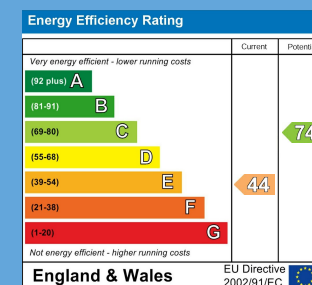


## Your Property - Our Business

- Residential Estate Agents •
- Lettings and Property Managers •
- Land and New Homes Agents •

Leamington Spa Office  
Somerset House  
Clarendon Place  
Royal Leamington Spa  
CV32 5QN

☎ 01926 881144    🌐 [ehbresidential.com](http://ehbresidential.com)



Also at: Warwick, 17-19 Jury St, Warwick CV34 4EL