

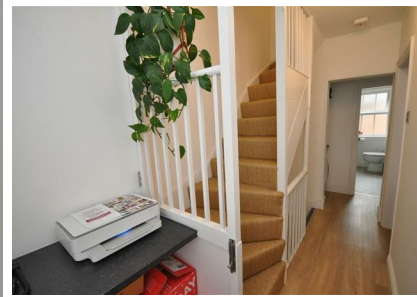


129a, Regent Street, Leamington Spa

£1,500 PCM



A stunning two double bedroom duplex apartment which has been fitted to a high quality finish throughout situated in the heart of the town centre.

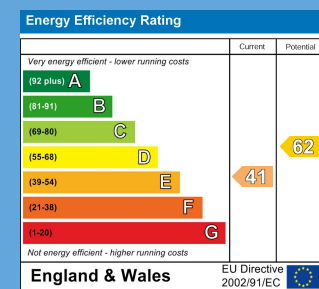


Your Property - Our Business

- Residential Estate Agents
- Lettings and Property Managers
- Land and New Homes Agents

Leamington Spa Office
Somerset House
Clarendon Place
Royal Leamington Spa
CV32 5QN

☎ 01926 881144 🌐 ehbresidential.com



Also at: Warwick, 17-19 Jury St, Warwick CV34 4EL