



**ehB**  
RESIDENTIAL

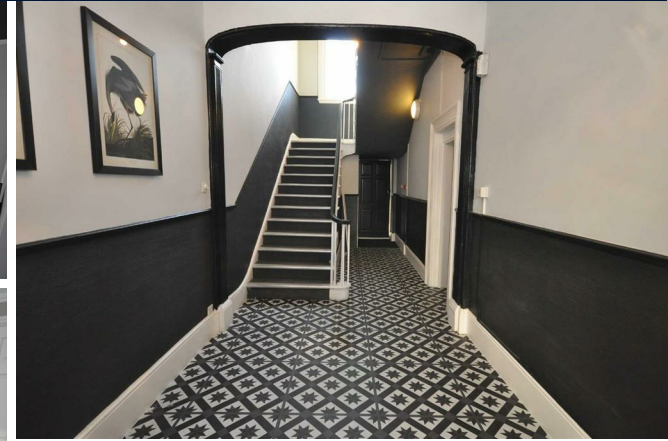
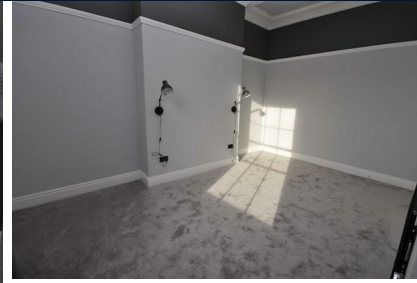
Your Property - Our Business

4, Clarendon Square, Leamington Spa

£1,500 PCM



EHB Residential are delighted to offer this beautiful apartment located within this fine period Grade II Listed building in the highly regarded setting of Clarendon Square, in the heart of Leamington's town centre. The property benefits from one car parking space at the rear of the building access via Russell Street.

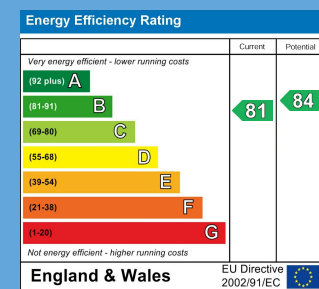


## Your Property - Our Business

- Residential Estate Agents
- Lettings and Property Managers
- Land and New Homes Agents

Leamington Spa Office  
Somerset House  
Clarendon Place  
Royal Leamington Spa  
CV32 5QN

01926 881144 [ehbresidential.com](http://ehbresidential.com)



Also at: Warwick, 17-19 Jury St, Warwick CV34 4EL