

**ehB**  
RESIDENTIAL

Your Property - Our Business

**1 Kingsbury Close, Ramsey Road, Leamington Spa**

**Asking Price  
£352,500**





**NO CHAIN AND READY TO MOVE INTO NOW!** New build, generous 3 bedroom home with garden and parking. Only two of this type remaining!

With a range of sizes and styles, there's something for everyone in Kingsbury Close. These versatile homes are designed for all walks of life.

Primed for those looking for a space to suit their needs, plots 1 and 2 have a built-in utility

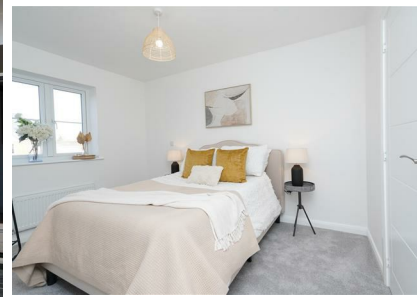
with small toilet room, along with a generous kitchen diner, with french door access to the patio and garden. The plot also benefits from a separate living room.

Upstairs there are 3 bedrooms a family bathroom and an ensuite to the master.

Plots 1 and 2 are generous 3 bedroom homes with garden and parking, and there are only two of this type remaining!

All enquiries please contact ehB Residential for further information and viewing arrangements.

Full Brochure is available to download from the listing, or please contact ehB Residential and we can provide you with a copy and further information.



- Residential Estate Agents
- Lettings and Property Managers
- Land and New Homes Agents



Leamington Spa Office  
Somerset House  
Clarendon Place  
Royal Leamington Spa  
CV32 5QN

01926 881144 [ehbresidential.com](http://ehbresidential.com)

Energy Efficiency Rating		Current	Potential
<i>Very energy efficient - lower running costs</i>			
(92 plus) <b>A</b>			
(81-91) <b>B</b>			
(69-80) <b>C</b>			
(55-68) <b>D</b>			
(39-54) <b>E</b>			
(21-38) <b>F</b>			
(1-20) <b>G</b>			
<i>Not energy efficient - higher running costs</i>			
<b>England &amp; Wales</b>		EU Directive 2002/91/EC	

Also at: Warwick, 17-19 Jury St, Warwick CV34 4EL