

ROUNTHWAITE & WOODHEAD

MARKET PLACE, PICKERING, NORTH YORKSHIRE, YO18 7AA Tel: (01751) 472800 Fax: (01751) 472040



3 WILLOWGATE, PICKERING, NORTH YORKSHIRE, YO18 7BE

A well positioned, end terrace stone cottage in the very centre of the town

Entrance Hall

Two Bedrooms

Good Sized Garden

Sitting Room

Bathroom

Useful Outbuilding

Kitchen/Diner

Gas Central Heating

EPC Rating D

PRICE GUIDE: £215,000

Also at: 26 Market Place, Kirkbymoorside Tel: (01751) 430034 & 53 Market Place, Malton Tel: (01653) 600747
Email: rounthwaite-woodhead@btconnect.com

www.rounthwaite-woodhead.co.uk

Description

Willowgate is one of the older streets in Pickering that emerges from the town centre. It is a single lane road mostly lined with period stone cottages sloping gently down to the market place. Number 3 has a westerly front aspect and a rear garden that backs on to the St Peter & St Pauls' church yard with a useful brick out house at its end.

Number 3 is an end terrace, stone under pan tile cottage with a surprisingly good sized garden to its rear. The entrance hall runs from the front to the back of the property with a door off it that opens into a living room. There is a kitchen to the rear with fitted storage units and a back door that steps out upto the garden. Stair with storage beneath raise from the sitting room up to the first floor where there are two double bedrooms served by the white suited bathroom. The cottage has had some replacement windows over recent years and benefits from gas central heating.

To the rear, the garden is down mostly to lawn with a footpath that extends to a patio area and a recently re-roofed outbuilding (with power) that offers useful storage or shelter for entertaining.

General Information

Location: Pickering is a thriving market town found at the foot of the North York Moors National Park, along the A170 Thirsk to Scarborough Road. As a result there are excellent links to the East Coast and City of York where the train service runs from London to Edinburgh. Pickering has a good range of shops, a Monday street market, reputable schools for all ages and amenities that include doctors surgery, dental clinics and library.

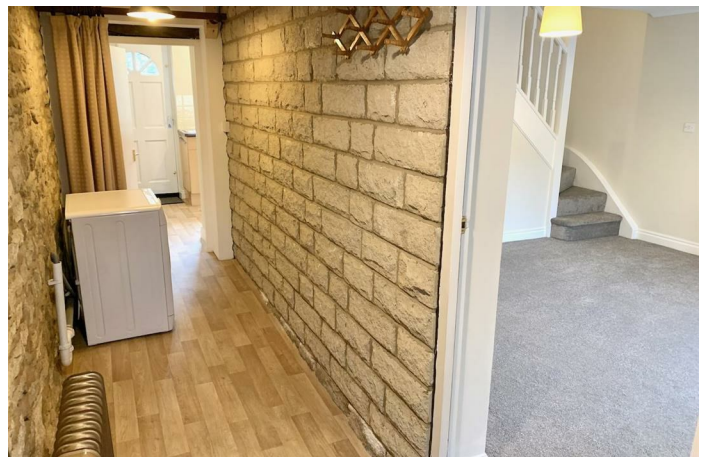
Services: Mains water, electricity and gas are connected. Connection to mains drains. Gas central heating.

Council Tax: We are informed by North Yorkshire Council that this property is in Band B

Tenure: We are advised by the Vendors that the property is freehold and vacant possession will be given upon completion.

Viewing Arrangements: Strictly by prior appointment through the Agents: Messrs Rounthwaite & Woodhead, Market Place, Pickering. Telephone: 01751 472800/430034

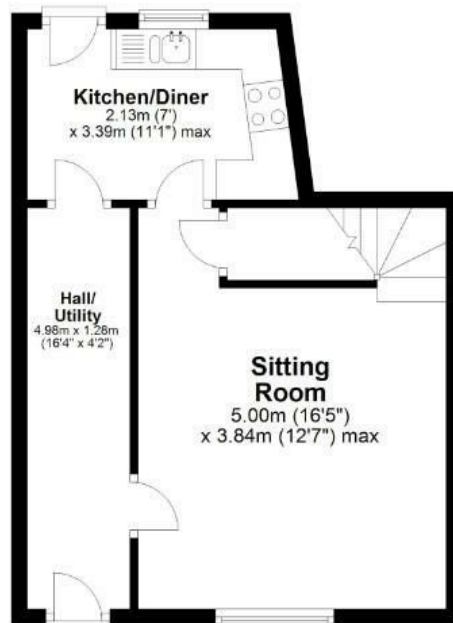
Directions: From the roundabout where the A170/169 join, head North (towards Whitby) along the A169 for approximately 100 yards past the pedestrian crossing/traffic lights and then take the next available left turn on to Hatcase Lane. Take the left turn, sign posted Willowgate, with no.3 being on the left hand side, approximately 100 yards down the hill.



Accommodation

Ground Floor

Approx. 33.4 sq. metres (359.2 sq. feet)



First Floor

Approx. 27.0 sq. metres (290.6 sq. feet)



Total area: approx. 60.4 sq. metres (649.8 sq. feet)

3 Willowgate, Pickering

Energy Efficiency Rating		
	Current	Potential
Very energy efficient - lower running costs		
(92 plus) A		
(81-91) B		
(69-80) C		
(55-68) D		
(39-54) E		
(21-38) F		
(1-20) G		
Not energy efficient - higher running costs		
England & Wales		EU Directive 2002/91/EC

Environmental Impact (CO ₂) Rating		
	Current	Potential
Very environmentally friendly - lower CO ₂ emissions		
(92 plus) A		
(81-91) B		
(69-80) C		
(55-68) D		
(39-54) E		
(21-38) F		
(1-20) G		
Not environmentally friendly - higher CO ₂ emissions		
England & Wales		EU Directive 2002/91/EC



Messrs Rounthwaite & Woodhead for themselves and their vendors and lessors whose agents they are give notice that these particulars are produced in good faith, set out as a general guide only and do not constitute any part of a contract. No person employed by Messrs Rounthwaite & Woodhead has any authority to make or give any representation or warranty whatsoever in relation to this property. The dimensions in the sales particulars are approximate only and the accuracy of any description cannot be guaranteed. Reference to machinery, services and electrical goods does not indicate that they are in good or working order. All reference to prices and rents etc. exclude VAT which may apply in some cases.

Covering Ryedale through offices in Malton, Pickering and Kirkbymoorside
www.rounthwaitewoodhead.co.uk

ROUNTHWAITE & WOODHEAD