



A two bedroom two bathroom first floor apartment within a luxury development
Carew Road, Northwood, Middlesex HA6 3NJ



Asking Price: £2,500 pcm

A two bedroom two bathroom first floor apartment within a luxury development

Carew Road, Northwood, Middlesex HA6 3NJ

-
- LUXURY APARTMENT • SECURE GATED DEVELOPMENT • EXCELLENT LOCATION • UNDERFLOOR HEATING • TWO BEDROOMS • TWO BATHROOMS • MODERN FITTED KITCHEN • MASTER BEDROOM with ENSUITE • BALCONY • UNFURNISHED • ALLOCATED PARKING SPACE
-

Description

A bright and spacious two bedroom two bathroom apartment on the second floor of this luxury development situated in an exclusive leafy street conveniently positioned for Northwood's shopping and transport links. The property benefits from a fully fitted kitchen and utility room, two double bedrooms, one with an ensuite and underfloor heating, a spacious lounge and is surrounded by well-manicured and attractive communal gardens and allocated gated parking.

An advance payment equivalent to one week's rent is required to secure this property

** The images provided are taken from a previous tenancy**

Location

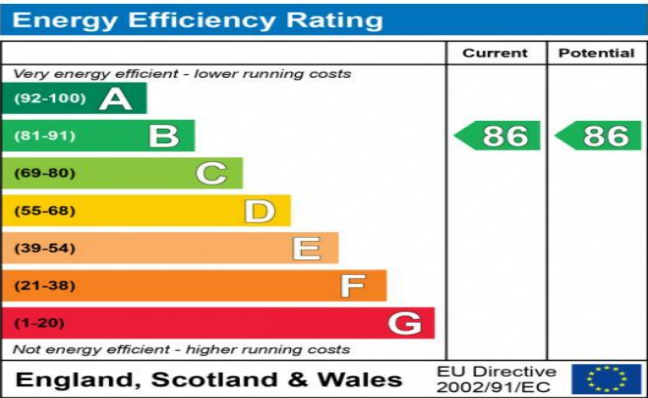
Northwood provides a range of shopping facilities including a Waitrose supermarket, a variety of restaurants and other amenities with the Metropolitan Line station providing access to Baker Street and the City. There is a plethora of state and private schooling together with a wide choice of recreational facilities, which include golf courses and fitness centres. The M1, M40 and M25 motorways are also accessible.





Additional Information

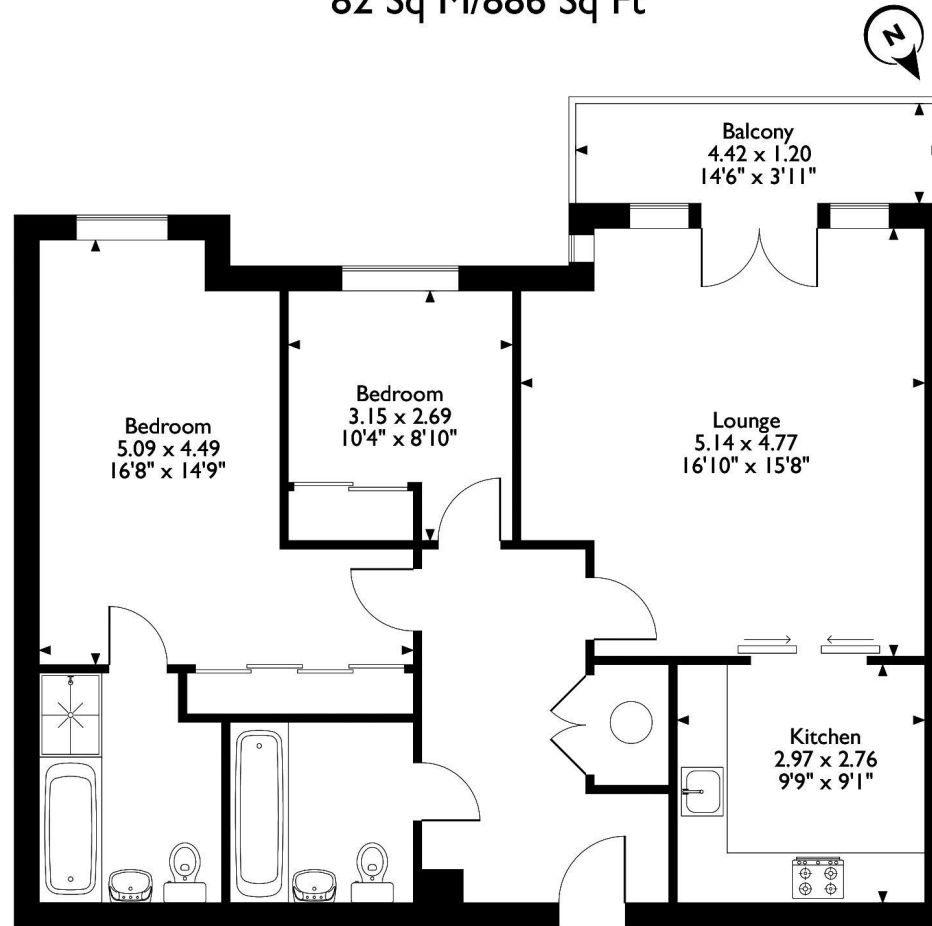
- Council Tax Borough: Hillingdon
- Council Tax Band: F
- Deposit Amount: £2,653.00
- Reservation Payment: One week's rent
- Energy Efficiency Rating: Band B
- Available Date: 26/08/2024



The energy efficiency rating is a measure of the overall efficiency of a home. The higher the rating the more energy efficient the home is and the lower the fuel bills will be.



Orchid House, 23 Carew Road, Northwood
Approximate Gross Internal Area
82 Sq M/886 Sq Ft



Please note that the location of doors, windows and other items are approximate and this floorplan is to be used for illustrative purposes only. Unauthorized reproduction is prohibited.



REGISTERED OFFICE 2-4 PACKHORSE ROAD, GERRARDS CROSS, BUCKINGHAMSHIRE, ENGLAND, SL9 7QE. COMPANY NO. 07557114. VAT NO. GB211239453