



A well presented two bedroom mid terrace house
Mezen Close, Northwood, HA6 2DP



Asking Price: £1,550 pcm

A well presented two bedroom mid terrace house

Mezen Close, Northwood, HA6 2DP

• FITTED KITCHEN • LOUNGE/DINING ROOM • TWO DOUBLE BEDROOMS WITH FITTED WARDROBES • FAMILY BATHROOM • UNDERSTAIRS STORAGE CUPBOARD • SEPARATE W.C • PRIVATE GARDEN & PATIO • SHED • UNFURNISHED

Description

A well presented two bedroom mid terrace house conveniently located to provide access to Northwood shopping and transport connections. The property benefits from being in good decorative order throughout and provides well planned accommodation.

Location

Northwood provides a range of shopping facilities including Waitrose supermarket, a variety of restaurants and other amenities with the Metropolitan Line station providing access to Baker Street and the City. There is a plethora of state and private schooling together with a wide choice of recreational facilities, which include golf courses and fitness centres. The M1, M40 and M25 motorways are also accessible.





Additional Information

- Local Authority: Hillingdon
- Council Tax Band: D
- Energy Efficiency Rating: Band C
- Available Date: 06/11/2020

Energy Efficiency Rating			Environmental Impact (CO ₂) Rating		
	Current	Potential		Current	Potential
Very energy efficient - lower running costs			Very environmentally friendly - lower CO ₂ emissions		
(92-100) A			(92-100) A		
(81-91) B			(81-91) B		
(69-80) C	75	76	(69-80) C	76	77
(55-68) D			(55-68) D		
(39-54) E			(39-54) E		
(21-38) F			(21-38) F		
(1-20) G			(1-20) G		
Not energy efficient - higher running costs			Not environmentally friendly - higher CO ₂ emissions		
England, Scotland & Wales EU Directive 2002/91/EC			England, Scotland & Wales EU Directive 2002/91/EC		

The energy efficiency rating is a measure of the overall efficiency of a home. The higher the rating the more energy efficient the home is and the lower the fuel bills will be.

The environmental impact rating is a measure of a home's impact on the environment in terms of carbon dioxide (CO₂) emissions. The higher the rating the less impact it has on the environment.



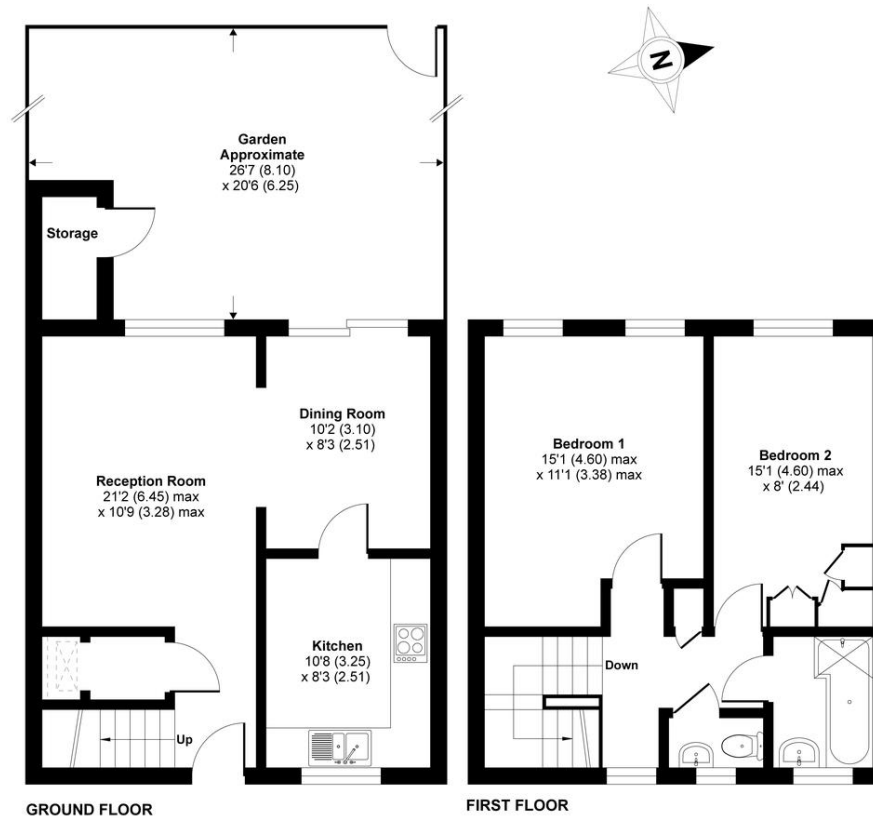
Mezen Close, Mezen Close, Northwood, HA6

Approximate Area = 846 sq ft / 79 sq m

Outbuilding = 17 sq ft / 2 sq m

Total = 863 sq ft / 81 sq m

For identification only - Not to scale



Floor plan produced in accordance with RICS Property Measurement Standards incorporating International Property Measurement Standards (IPMS2 Residential). © nichecom 2020. Produced for Robsons Lettings. REF: 665684

ROBSONS

3 Maxwell Road, Northwood, Middlesex HA6 2XY
T: 01923 822211 F: 01923 820783 E: lettings@robsonswb.com



Robsons Residential Lettings Limited is a company registered in England and Wales and its registered office is at 23 Church Street, Rickmansworth, Hertfordshire WD3 1DE
Registered Number - 07557114 VAT Registered No - 211 239 453