



A charming three bedroom Victorian end of terraced house  
Reginald Road, Northwood, HA6 1EG

**ROBSONS**

**Asking Price: £2,400 pcm**

## **A charming three bedroom Victorian end of terraced house**

Reginald Road, Northwood, HA6 1EG

---

• ENTRANCE HALLWAY • LOUNGE • OPEN PLAN KITCHEN/DINING ROOM • CONSERVATORY • THREE DOUBLE BEDROOMS • TWO BATHROOMS • PRIVATE GARDEN • OFF STREET PARKING • UNFURNISHED

---

### **Description**

A charming three bedroom Victorian end of terraced house offering contemporary decor and furnishings but keeping within the properties character. Positioned in one of the most sought after residential roads in the heart of Old Northwood. Benefiting from off street parking to the front and secluded, well maintained rear garden. The property offers three spacious double bedrooms and two modern bathrooms.

\*\* An advance reservation payment of one weeks rent is required to secure the property \*\*

### **Location**

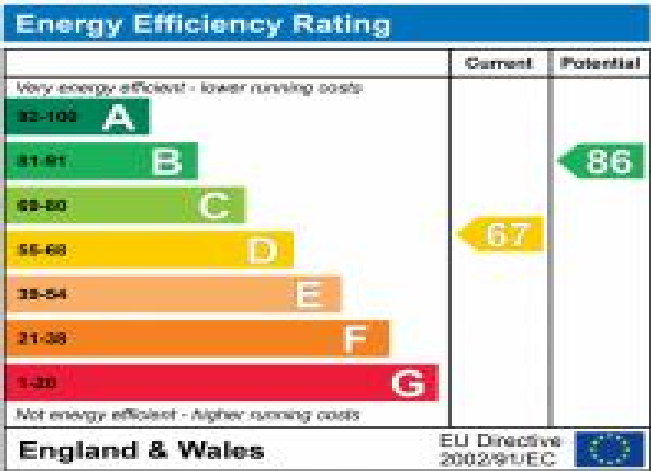
Northwood provides a range of shopping facilities, a Waitrose supermarket, restaurants and the Metropolitan Line Station providing access to Baker Street and the city beyond. The area has a range of both private and state schools. Places of worship and recreational facilities are also well catered for in the surrounding area and major motorway links to M25 and M1 are nearby.



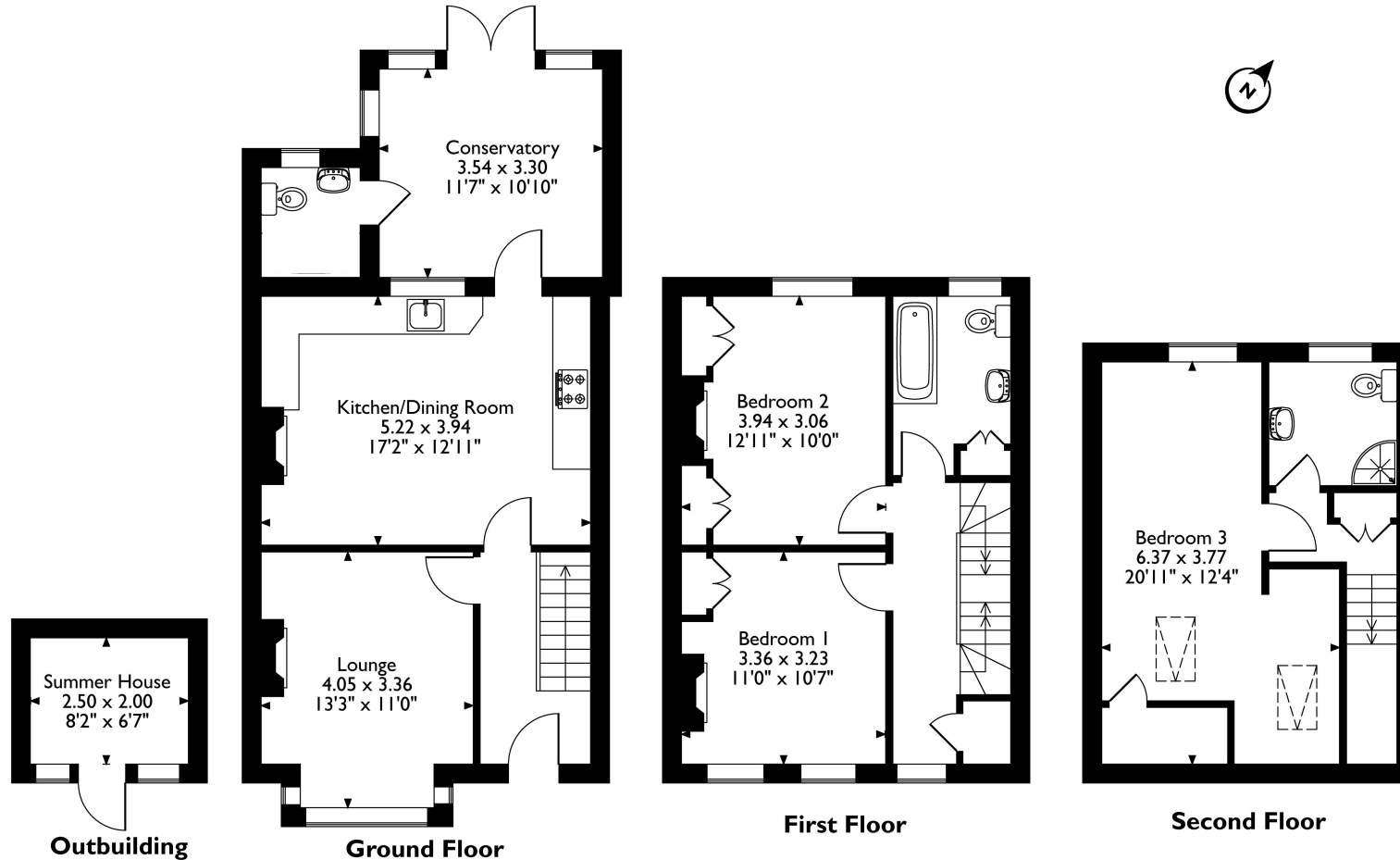


**Additional Information**

- Local Authority: Hillingdon
- Council Tax Band: E
- Deposit Amount: £2,769.00
- Reservation Payment: One weeks rent
- Energy Efficiency Rating: Band D
- Available Date: 18/11/2024



Approximate Gross Internal Area  
 Main House = 126 Sq M/1355 Sq Ft  
 Outbuilding = 5 Sq M/54 Sq Ft  
 Total = 131 Sq M/1409 Sq Ft



Please note that the location of doors, windows and other items are approximate and this floorplan is to be used for illustrative purposes only. Unauthorized reproduction is prohibited.



REGISTERED OFFICE 2-4 PACKHORSE ROAD, GERRARDS CROSS, BUCKINGHAMSHIRE, ENGLAND, SL9 7QE. COMPANY NO. 07557114. VAT NO. GB211239453