



A two bedroom, two bathroom first floor apartment with a balcony
Brookdene Drive, Northwood, HA6 3FG

ROBSONS

Asking Price: £2,200 pcm

A two bedroom, two bathroom first floor apartment with a balcony

Brookdene Drive, Northwood, HA6 3FG

• COMMUNAL ENTRANCE HALL WITH ENTRYPHONE SYSTEM • ENTRANCE HALL • LIVING ROOM WITH ACCESS TO PRIVATE BALCONY • MODERN KITCHEN WITH FITTED APPLIANCES • MAIN BEDROOM WITH FITTED WARDROBES AND ENSUITE SHOWER ROOM • BEDROOM TWO • BATHROOM • ALLOCATED PARKING • COMMUNAL GROUNDS • UNFURNISHED

Description

A contemporary first-floor apartment situated in a sought-after gated development in Northwood. Offering a convenient and secure living environment, the property comprises an entrance hall, a spacious master bedroom with a stunning ensuite shower room and built-in storage, a second well-sized bedroom, and a bright living room with access to a private balcony. The modern kitchen comes with fitted appliances, and there's a stylish family bathroom. Additional benefits include allocated parking, a telephone entry system, and access to a communal garden. With its ideal location and high-quality finishes, this apartment is perfect for those seeking comfort and convenience in a prestigious area.

**** An advance reservation payment of one weeks rent is required to secure**

Location

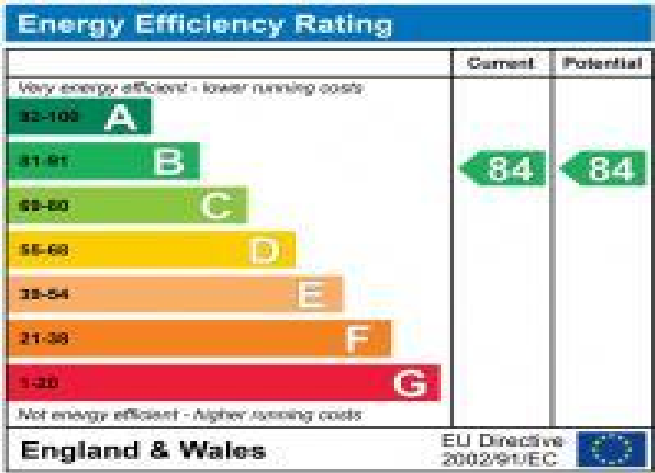
Northwood provides a range of shopping facilities including a Waitrose supermarket, a variety of restaurants and other amenities with the Metropolitan Line station providing access to Baker Street and the City. There is a plethora of state and private schooling together with a wide choice of recreational facilities, which include golf courses and fitness centres. The M1, M40 and M25 motorways are also accessible.



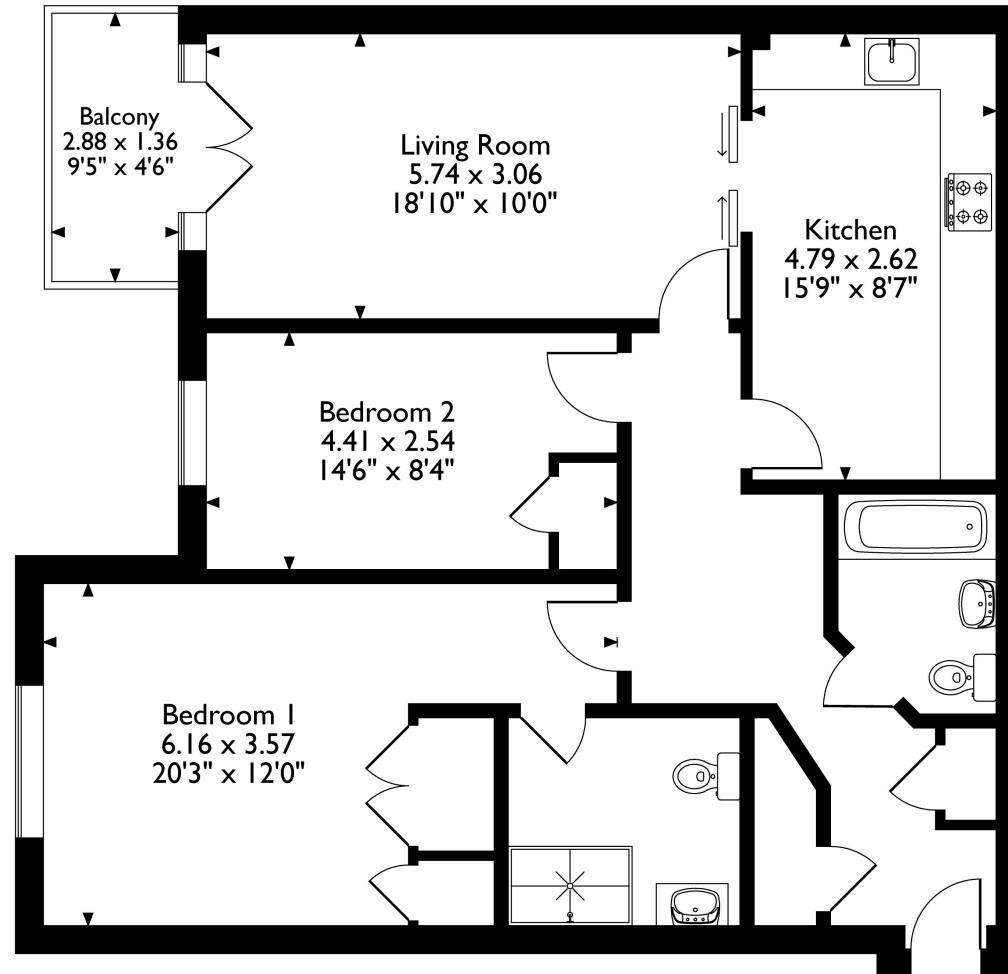


Additional Information

- Local Authority: Hillingdon
- Council Tax Band: F
- Deposit Amount: £2,538.00
- Reservation Payment: One weeks rent
- Energy Efficiency Rating: Band B
- Available Date: 03/03/2026



Saxon Court, Brookdene Drive, Northwood, HA6 3FG
Approximate Gross Internal Area
88 Sq M/947 Sq Ft



First Floor

Please note that the location of doors, windows and other items are approximate and this floorplan is to be used for illustrative purposes only. Unauthorized reproduction is prohibited.

