



A generously sized three bedroom ground floor apartment
Eastbury Avenue, Northwood, Middlesex HA6 3LN

ROBSONS

Asking Price: £2,350 pcm

A generously sized three bedroom ground floor apartment

Eastbury Avenue, Northwood, Middlesex HA6 3LN

• GROUND FLOOR ENTRANCE • RECEPTION/DINING ROOM • KITCHEN • MASTER BEDROOM WITH FITTED WARDROBES AND ENSUITE SHOWER ROOM • TWO FURTHER BEDROOMS • BATHROOM • UNDERGROUND SECURE GATED PARKING • LANDSCAPED COMMUNAL GROUNDS • DOUBLE GLAZING • GAS CENTRAL HEATING • UNFURNISHED

Description

A bright and spacious three-bedroom ground floor apartment located on Eastbury Avenue in Northwood. The property offers well-appointed accommodation comprising: an entrance hall, a modern kitchen with integrated appliances, a generous lounge filled with natural light, a master bedroom with fitted wardrobes and an en-suite bathroom, a second double bedroom with built-in wardrobes and access to a private balcony, a third bedroom with built in wardrobes, and a contemporary family bathroom. Private allocated parking is available via an underground car park and further parking is available to residents at the front of the development.

**** An advance reservation payment of one weeks rent is required to secure the property ****

Location

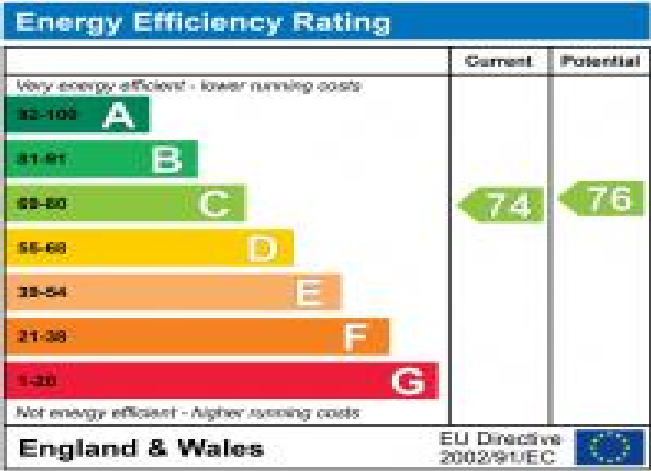
Northwood provides a range of shopping facilities including Waitrose supermarket, a variety of restaurants and other amenities with the Metropolitan Line station providing access to Baker Street and the City. There is a plethora of state and private schooling together with a wide choice of recreational facilities, which include golf courses and fitness centres. The M1, M40 and M25 motorways are also accessible.



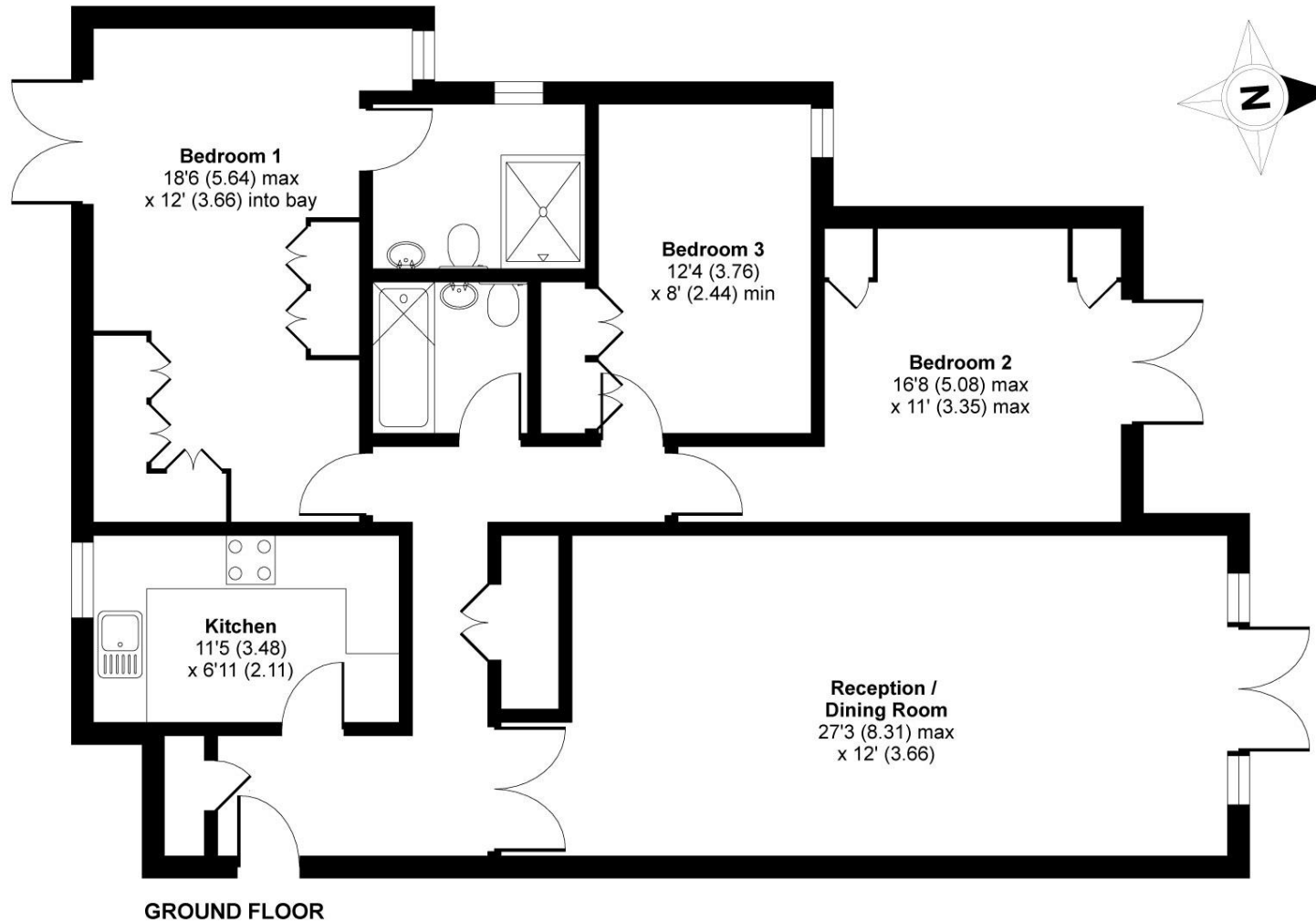


Additional Information

- Local Authority: London Borough of Hillingdon
- Council Tax Band: F
- Deposit Amount: £2,711.00
- Reservation Payment: One weeks rent
- Energy Efficiency Rating: Band C
- Available Date: 27/03/2026



APPROX. GROSS INTERNAL FLOOR AREA 1103 SQ FT 102.4 SQ METRES



'For illustrative purposes only - not to scale. The position and size of doors, windows, appliances and other features are approximate only.'

Whilst every attempt has been made to ensure the accuracy of the floor plan contained here, measurements of doors, windows and rooms are approximate and no responsibility is taken for any error, omission or misstatement. These plans are for representation purposes only as defined by RICS Code of Measuring Practice and should be used as such by any prospective purchaser. Specifically no guarantee is given on the total square footage of the property if quoted on this plan. Any figure given is for initial guidance only and should not be relied on as a basis of valuation.

Copyright nichecom.co.uk 2018 Produced for Robsons REF : 329480



REGISTERED OFFICE 2-4 PACKHORSE ROAD, GERRARDS CROSS, BUCKINGHAMSHIRE, ENGLAND, SL9 7QE. COMPANY NO. 07557114. VAT NO. GB211239453