



ROBSONS
TO LET
02089 922211

A four bedroom town house in a town centre location
Ashbourne Square, Northwood, Middlesex HA6 3BQ

ROBSONS

Asking Price: £3,850 pcm

A four bedroom town house in a town centre location

Ashbourne Square, Northwood, Middlesex HA6 3BQ

• GROUND FLOOR - STUDY • UTILITY ROOM • SHOWER ROOM • FIRST FLOOR - RECEPTION ROOM • KITCHEN/DINING ROOM • SECOND FLOOR - MAIN BEDROOM WITH ENSUITE • THREE FURTHER BEDROOMS • BATHROOM • INTEGRAL GARAGE • TIERED REAR GARDEN • UNFURNISHED • DRIVEWAY WITH PARKING

Description

This very well-presented and modern four-bedroom townhouse, located in the sought-after Ashbourne Square in Northwood, offers stylish and comfortable living. The property features four spacious bedrooms, two bathrooms, a contemporary kitchen, and bright reception rooms. Externally, there is a rear garden, a front drive, and a garage, providing ample space and convenience. Perfectly suited for modern family living, this home combines functionality with a great location.

**** An advance reservation payment of one weeks rent is required to secure the property ****

Location

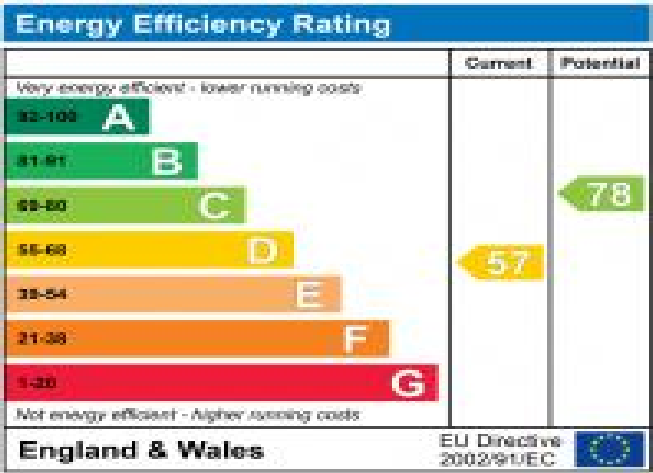
Northwood provides a range of shopping facilities including a Waitrose supermarket, a variety of restaurants and other amenities with the Metropolitan Line station providing access to Baker Street and the City. There is a plethora of state and private schooling together with a wide choice of recreational facilities, which include golf courses and fitness centres. The M1, M40 and M25 motorways are also accessible.



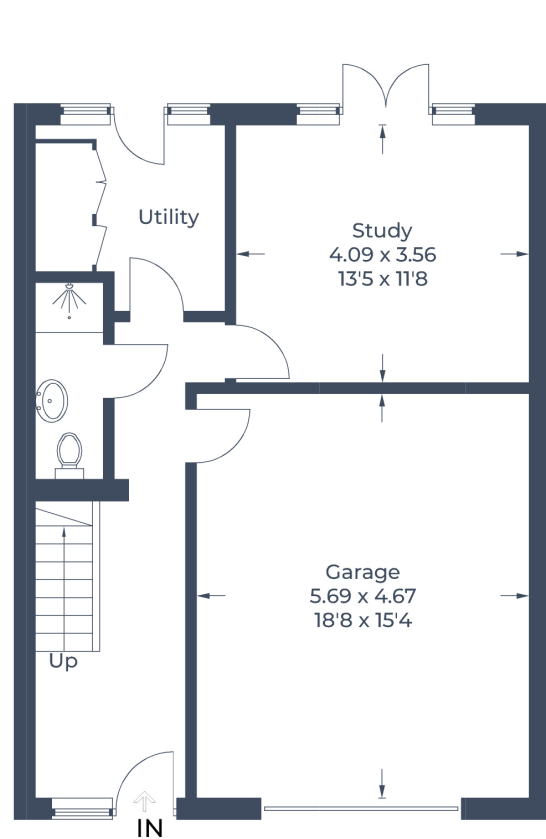


Additional Information

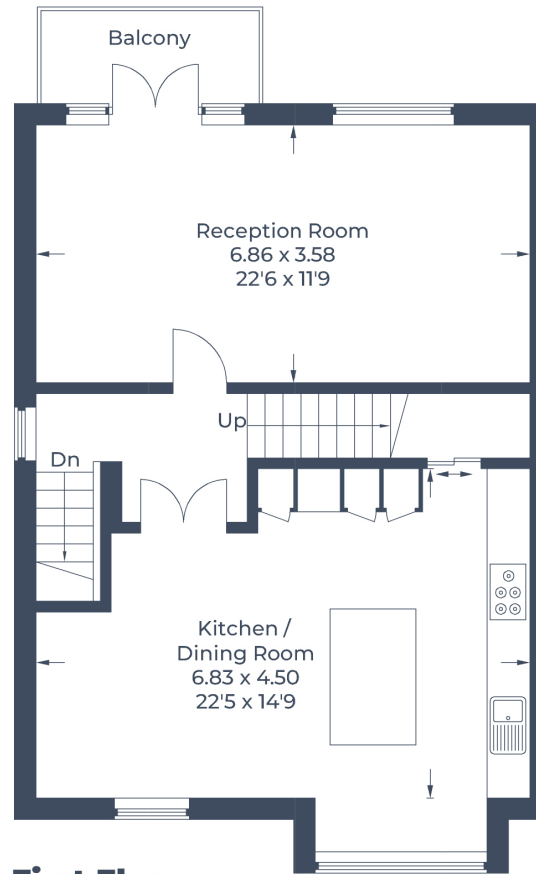
- Local Authority: Hillingdon
- Council Tax Band: G
- Deposit Amount: £4,442.00
- Reservation Payment: One weeks rent
- Energy Efficiency Rating: Band D
- Available Date: 27/02/2026



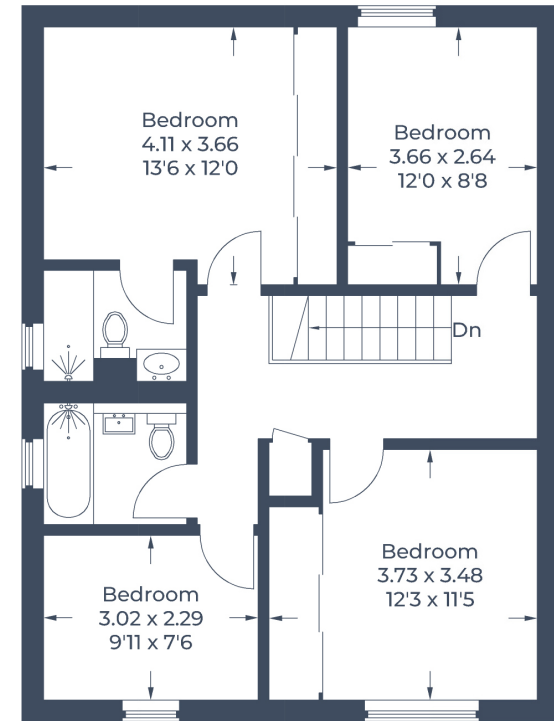
Approximate Gross Internal Area
 Ground Floor = 65.3 sq m / 703 sq ft
 First Floor = 66.8 sq m / 719 sq ft
 First Floor = 64.9 sq m / 698 sq ft
 Total = 197.0 sq m / 2,120 sq ft
 (Including Garage)



Ground Floor



First Floor



Second Floor

Illustration for identification purposes only,
 measurements are approximate, not to scale.
 © CJ Property Marketing Produced for Robsons

