



A bright and spacious two bedroom apartment in a sought after location
Churchill Court, Northwood, Middlesex HA6 2RY



Asking Price: £1,750 pcm

A bright and spacious two bedroom apartment in a sought after location

Churchill Court, Northwood, Middlesex HA6 2RY

• DOUBLE GLAZED • GAS CENTRAL HEATING • SECURE ENTRYPHONE SYSTEM • LIVING ROOM/DINING ROOM • FITTED KITCHEN • BATHROOM • TWO DOUBLE BEDROOMS with WARDROBES • COMMUNAL GARDENS • ALLOCATED PARKING • UNFURNISHED/PART FURNISHED

Description

A bright and spacious two bedroom second floor apartment. The property comprises of entrance hallway, kitchen, living/dining room, two bedrooms and bathroom. Northwood Town Centre is a short walk away providing easy access to an array of shops, Waitrose supermarket, restaurants, schools and Metropolitan Line Station to Baker Street and The City.

**** An advance reservation payment of one weeks rent is required to secure the property ****

Location

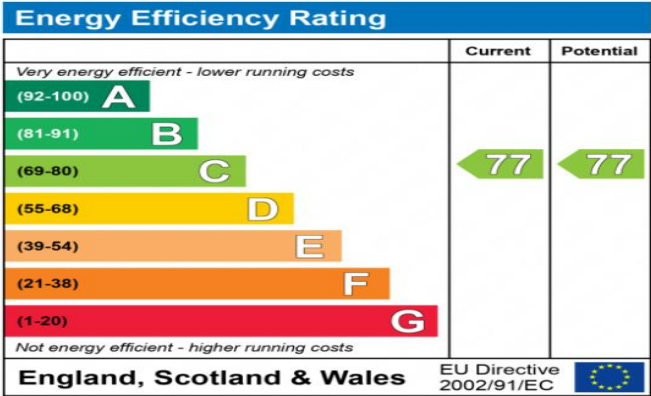
Northwood provides a range of shopping facilities including Waitrose supermarket, a variety of restaurants and other amenities with the Metropolitan Line station providing access to Baker Street and the City. There is a plethora of state and private schooling together with a wide choice of recreational facilities, which include golf courses and fitness centres. The M1, M40 and M25 motorways are also accessible.





Additional Information

- Local Authority: Hillingdon
- Council Tax Band: E
- Deposit Amount: £2,019.00
- Reservation Payment: One weeks rent
- Energy Efficiency Rating: Band C
- Available Date: 07/12/2025



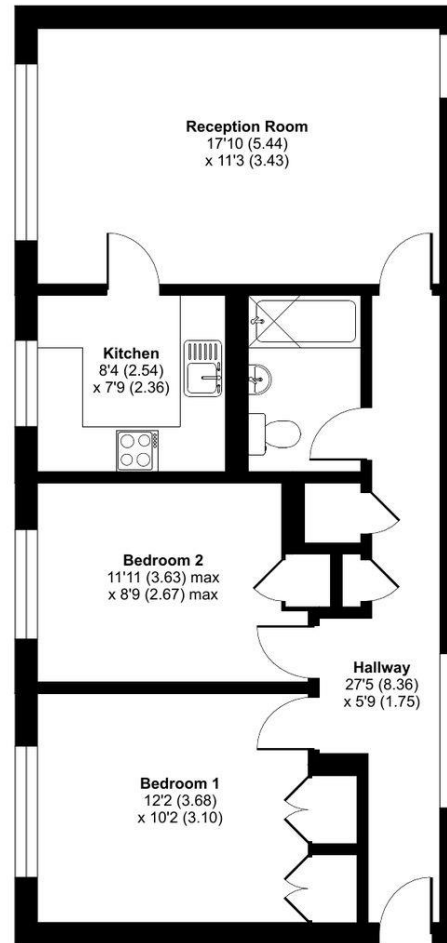
The energy efficiency rating is a measure of the overall efficiency of a home. The higher the rating the more energy efficient the home is and the lower the fuel bills will be.



Green Lane, Northwood, HA6

Approximate Area = 707 sq ft / 65.7 sq m

For identification only - Not to scale



THIRD FLOOR



Floor plan produced in accordance with RICS Property Measurement Standards incorporating International Property Measurement Standards (IPMS2 Residential). © nichecom 2022. Produced for Robsons Lettings. REF: 838066



Middlesex | Hertfordshire | Buckinghamshire



REGISTERED OFFICE 2-4 PACKHORSE ROAD, GERRARDS CROSS, BUCKINGHAMSHIRE, ENGLAND, SL9 7QE. COMPANY NO. 07557114. VAT NO. GB211239453