



A spacious five bedroom detached home in a desirable location  
Lynwood Heights, Rickmansworth, WD3 4ED

**ROBSONS**

**Asking Price: £5,500 pcm**

## **A spacious five bedroom detached home in a desirable location**

Lynwood Heights, Rickmansworth, WD3 4ED

---

• ENTRANCE HALL • THREE RECEPTION ROOMS • CONSERVATORY • LARGE KITCHEN & SEPARATE UTILITY ROOM • MAIN BEDROOM WITH ENSUITE BATH/SHOWER ROOM • FOUR FURTHER BEDROOMS • SHOWER ROOM • LARGE GARDEN WITH SUMMER HOUSE • HEATED SWIMMING POOL • DRIVEWAY • UNFURNISHED • GARAGE

---

### **Description**

Situated on the desirable Lynwood Heights, this spacious five-bedroom, two-bathroom detached home has been recently redecorated and re-carpeted throughout. The property offers four generous reception rooms, including a bright conservatory, and a modern brand new en-suite to the main bedroom, plus a new family shower room. Additional features include a heated outdoor swimming pool, private driveway, garage, and well-maintained gardens—perfect for families and entertaining.

**\*\* An advance reservation payment of one weeks rent is required to secure the property \*\***

### **Location**

Rickmansworth town centre has a wide range of boutique shops, coffee houses, restaurants and major supermarkets. The Metropolitan and Chiltern line train services connect you to London Baker Street, Marylebone Station and beyond. The M25 motorway is available at both junction 17 and 18, connecting you to the national motorway network. Major London airports are also within reach. The area is well served for good quality private and state schools for all ages. Chorleywood and Rickmansworth offer everything for the sporting individual from rugby, cricket, football, tennis, horse riding and golf. Rickmansworth Aquadrome is an ideal setting for walks, sailing, fishing and water skiing.

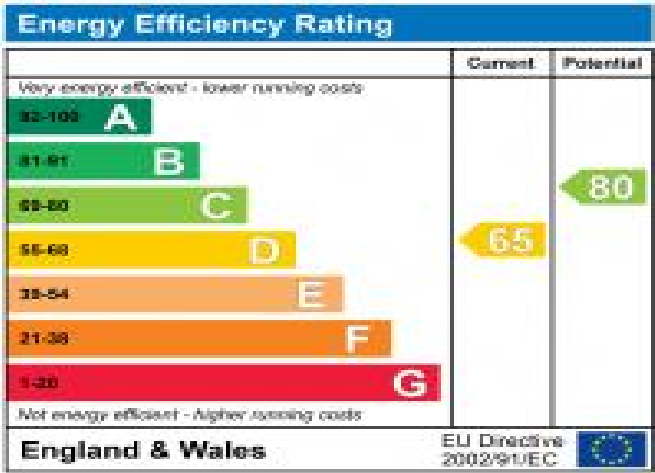






Additional Information

- Local Authority: Three Rivers
- Council Tax Band: G
- Deposit Amount: £7,615.00
- Reservation Payment: One weeks rent
- Energy Efficiency Rating: Band D
- Available Date: 21/07/2025

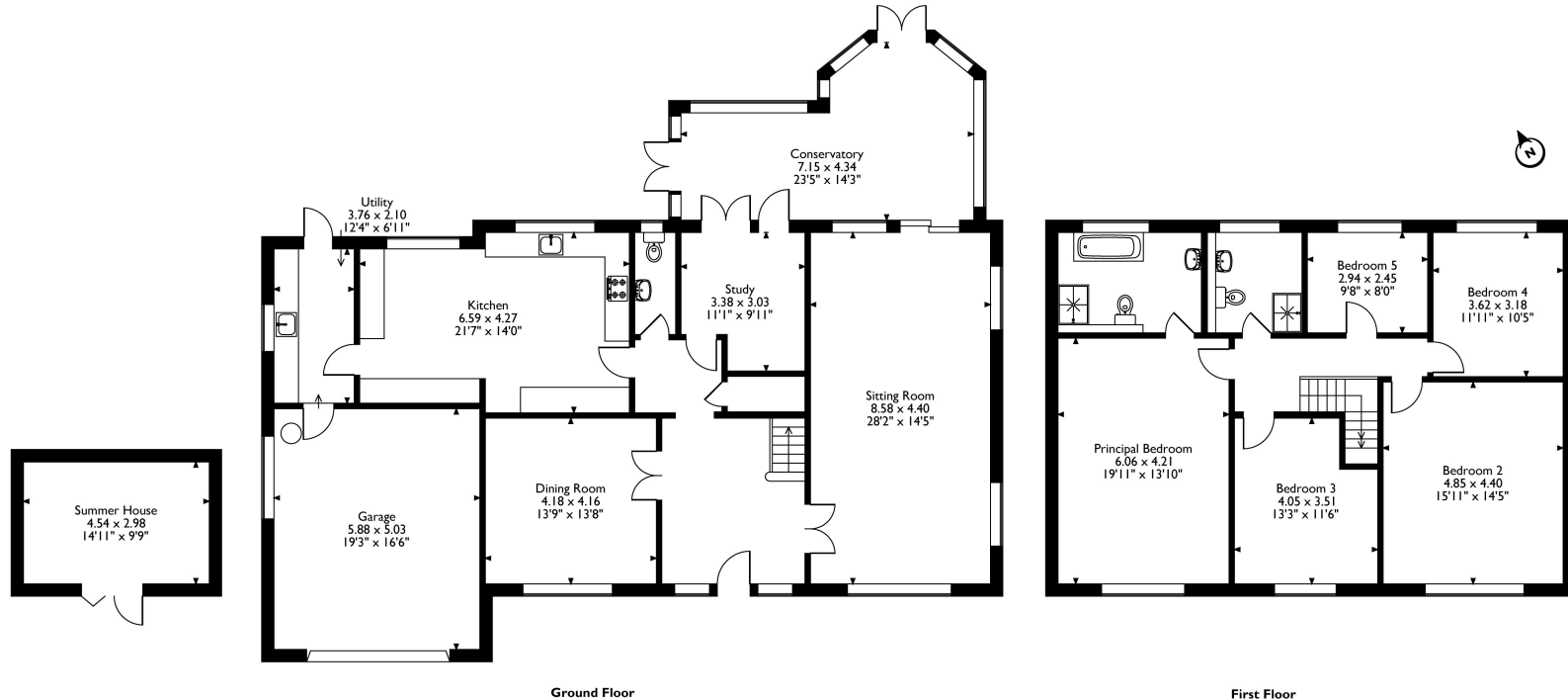


Lynwood Heights, Rickmansworth, Hertfordshire, WD3 4ED

Approximate Gross Internal Area  
Main House = 290 Sq M/3122 Sq Ft

Outbuilding = 14 Sq M/151 Sq Ft

Total = 304 Sq M/3273 Sq Ft



Please note that the location of doors, windows and other items are approximate and this floorplan is to be used for illustrative purposes only. Unauthorized reproduction is prohibited.



REGISTERED OFFICE 2-4 PACKHORSE ROAD, GERRARDS CROSS, BUCKINGHAMSHIRE, ENGLAND, SL9 7QE. COMPANY NO. 07557114. VAT NO. GB211239453