



A bright and spacious three bedroom town house set over three floors  
James Way, Watford, WD19 6HL





**Asking Price: £2,250 pcm**

## **A bright and spacious three bedroom town house set over three floors**

James Way, Watford, WD19 6HL

---

• TOWN HOUSE SET OVER THREE FLOORS • FITTED KITCHEN • DINING ROOM • GUEST CLOAKROOM • RECEPTION ROOM ON 1ST FLOOR • THREE BEDROOMS • MASTER BEDROOM WITH ENSUITE SHOWER • FAMILY BATHROOM • GARDEN • ALLOCATED PARKING SPACE • UNFURNISHED

---

### **Description**

A bright and spacious three bedroom town house set over three floors. The ground floor comprises of downstairs guest cloakroom, kitchen and dining room leading on to the garden. To the first floor there is a reception room and one bedroom, to the second floor there are two further bedrooms, master bedroom with ensuite bedroom and a family bathroom. The property is offered unfurnished with one parking space.

N.B a new EPC has been commissioned

**\*\* An advance reservation payment of one weeks rent is required to secure the property \*\***

### **Location**

The property is located close to Northwood town centre which provides a range of shopping facilities, a Waitrose supermarket, restaurants and the Metropolitan Line Station and Carpenders Park Train Station and Watford Town centre and it's amenities. The area has a range of both private and state schools. Places of worship and recreational facilities are also well catered for in the surrounding area and major motorway links to M25 and M1 are nearby.

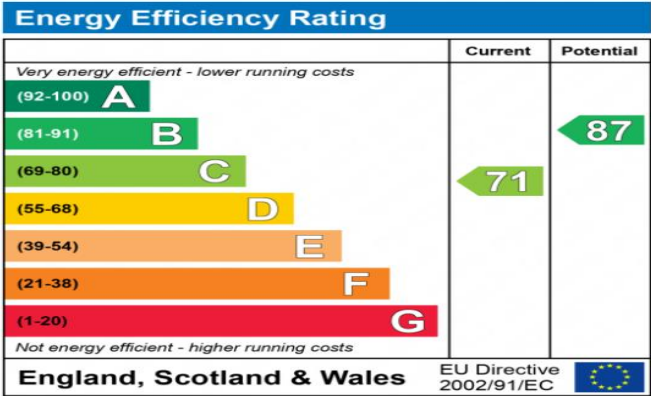






Additional Information

- Local Authority: Three Rivers District Council
- Council Tax Band: D
- Deposit Amount: £2,596.00
- Reservation Payment: One weeks rent
- Energy Efficiency Rating: Band C
- Available Date: 15/08/2025



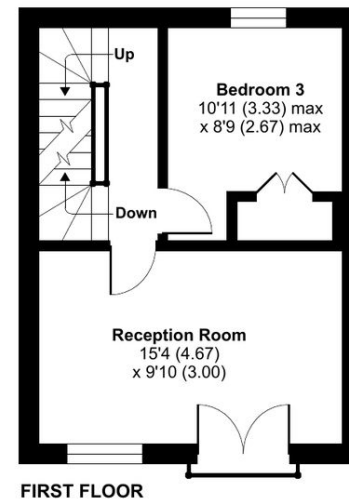
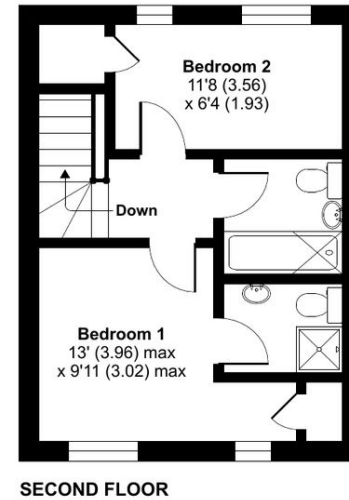
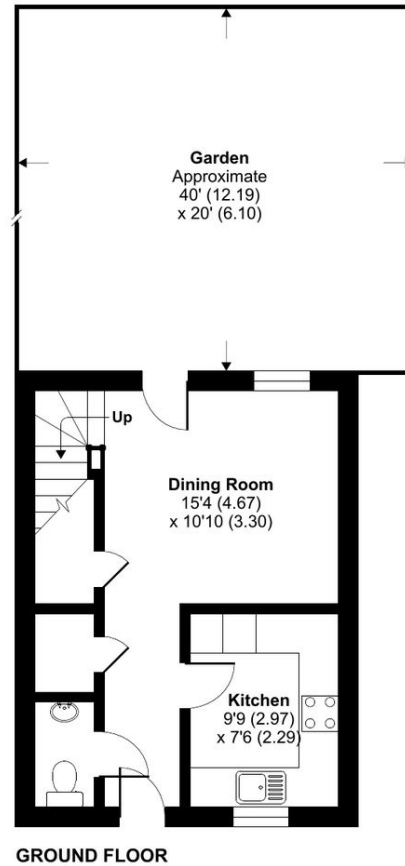
The energy efficiency rating is a measure of the overall efficiency of a home. The higher the rating the more energy efficient the home is and the lower the fuel bills will be.



# James Way, Watford, WD19

Approximate Area = 972 sq ft / 90.3 sq m

For identification only - Not to scale



Floor plan produced in accordance with RICS Property Measurement Standards incorporating International Property Measurement Standards (IPMS2 Residential). © nichecom 2022. Produced for Robsons Lettings. REF: 903047



REGISTERED OFFICE 2-4 PACKHORSE ROAD, GERRARDS CROSS, BUCKINGHAMSHIRE, ENGLAND, SL9 7QE. COMPANY NO. 07557114. VAT NO. GB211239453

# ROBSONS