



A two bedroom terraced house in a cul de sac location
Hawkesworth Close, Northwood, HA6 2FT



Asking Price: £1,850 pcm

A two bedroom terraced house in a cul de sac location

Hawkesworth Close, Northwood, HA6 2FT

• LIVING ROOM • FITTED KITCHEN • TWO BEDROOMS ONE WITH FITTED WARDROBES • MODERN SHOWER ROOM • REAR GARDEN • PRIVATE FRONT GARDEN • OUTSIDE STORAGE • PERMIT PARKING AVAILABLE ON THE STREET • PART FURNISHED

Description

Located in a quiet cul-de-sac, this well-presented two-bedroom terraced home offers a bright living room, fitted kitchen with appliances, two bedrooms, and a modern family bathroom. Externally, there's a front patio with storage cupboard and a mature private rear garden. Permit parking is available on the street.

**** An advance reservation payment of one weeks rent is required to secure the property ****

Location

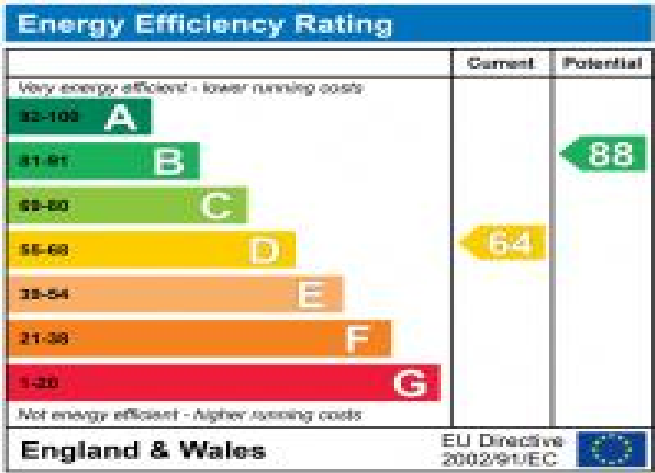
Northwood provides a range of shopping facilities including a Waitrose supermarket, a variety of restaurants and other amenities with the Metropolitan Line station providing access to Baker Street and the City. There is a plethora of state and private schooling together with a wide choice of recreational facilities, which include golf courses and fitness centres. The M1, M40 and M25 motorways are also accessible.





Additional Information

- Local Authority: Hillingdon
- Council Tax Band: D
- Deposit Amount: £2,134.00
- Reservation Payment: One weeks rent
- Energy Efficiency Rating: Band D
- Available Date: 03/06/2025



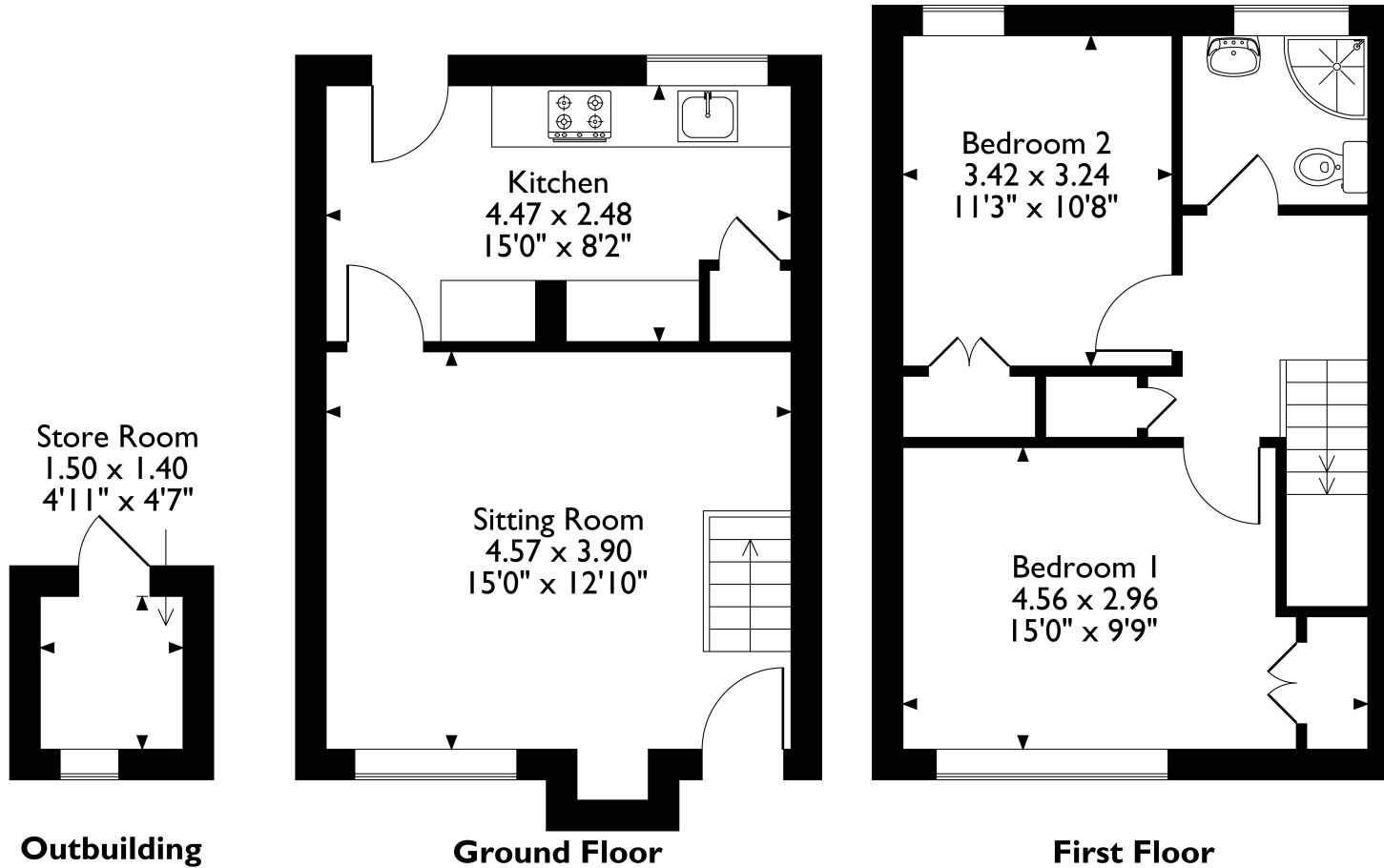
Hawkesworth Close, Northwood, HA6 2FT

Approximate Gross Internal Area

Main House = 62 Sq M/667 Sq Ft

Outbuilding = 2 Sq M/22 Sq Ft

Total = 64 Sq M/689 Sq Ft



Please note that the location of doors, windows and other items are approximate and this floorplan is to be used for illustrative purposes only. Unauthorized reproduction is prohibited.



REGISTERED OFFICE 2-4 PACKHORSE ROAD, GERRARDS CROSS, BUCKINGHAMSHIRE, ENGLAND, SL9 7QE. COMPANY NO. 07557114. VAT NO. GB211239453