



A stylish two bedroom, two bathroom town centre apartment  
Myrtleside Close, Northwood, Middlesex HA6 2XH

**ROBSONS**

**Asking Price: £2,700 pcm**

## **A stylish two bedroom, two bathroom town centre apartment**

Myrtleside Close, Northwood, Middlesex HA6 2XH

---

• ENTRANCE HALL • LIVING/DINING ROOM • KITCHEN • MAIN BEDROOM WITH FITTED WARDROBES & SUITE SHOWER ROOM • BEDROOM TWO WITH FITTED WARDROBE • FAMILY BATHROOM • COMMUNAL GROUNDS • UNFURNISHED

---

### **Description**

Nestled within the sought-after setting of Myrtleside Close in Northwood, this well-presented two-bedroom, two-bathroom ground floor apartment offers a superb blend of style, comfort, and convenience. Generously proportioned throughout, the property features a bright and spacious living/dining area with large windows that flood the space with natural light, complementing the tasteful modern décor. The kitchen is well-appointed with sleek cabinetry and integrated appliances. Both double bedrooms are generously sized, with the principal bedroom benefiting from a stylish en-suite shower room. A further modern family bathroom serves the second bedroom. Additional features include ample storage, gas central heating, double glazing, and well-maintained communal grounds.

**\*\* An advance reservation payment of one weeks rent is required to secure the property \*\***

### **Location**

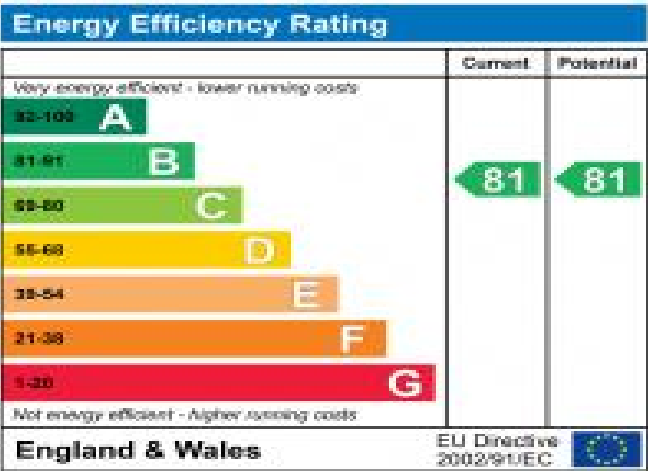
Northwood provides a range of shopping facilities, a Waitrose supermarket, restaurants and the Metropolitan Line Station providing access to Baker Street and the city beyond. The area has a range of both private and state schools. Places of worship and recreational facilities are also well catered for in the surrounding area and major motorway links to M25 and M1 are nearby.



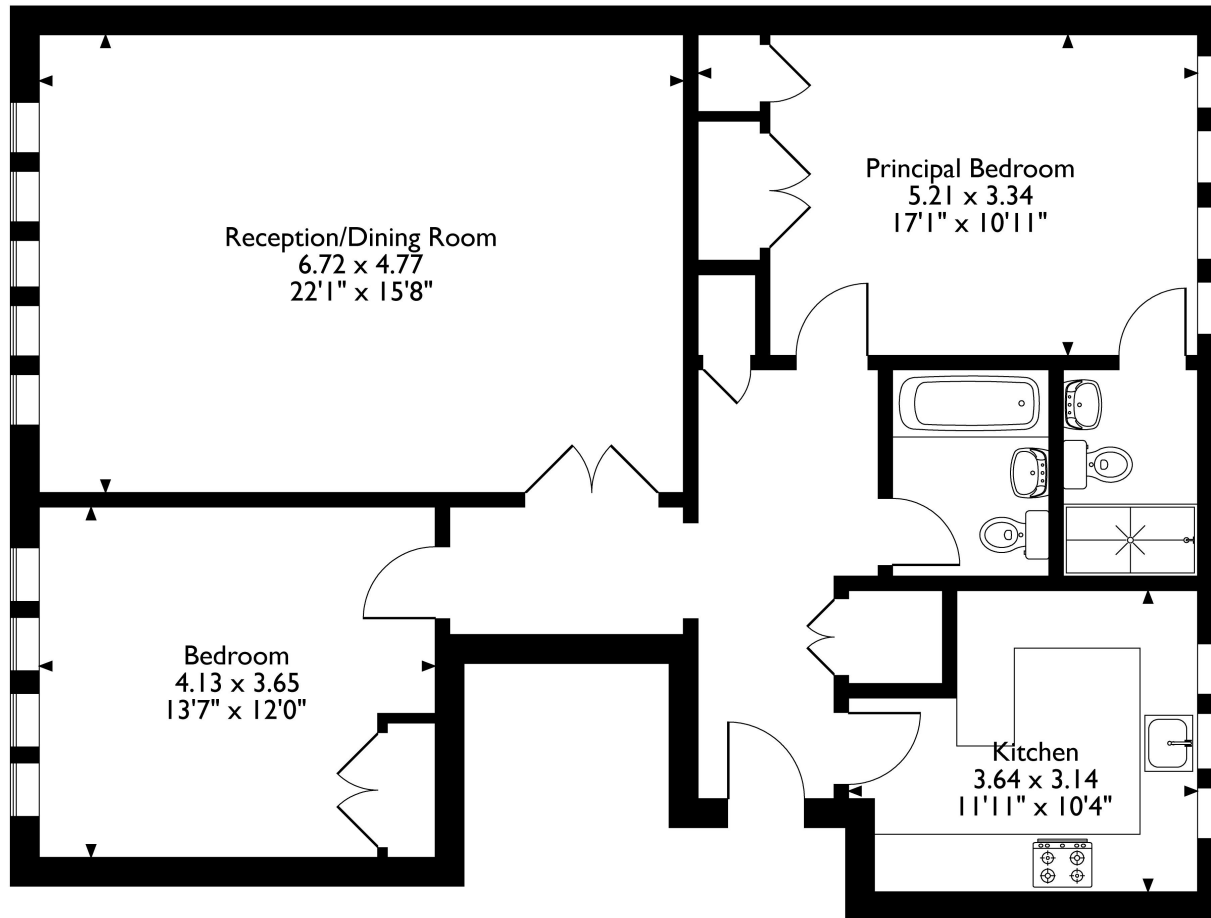


**Additional Information**

- Local Authority: Hillingdon
- Council Tax Band: F
- Deposit Amount: £3,115.00
- Reservation Payment: One weeks rent
- Energy Efficiency Rating: Band B
- Available Date: 27/05/2025



Myrtleside Close, Northwood, HA6 2XH  
Approximate Gross Internal Area  
97 Sq M/1044 Sq Ft



**Ground Floor**

Please note that the location of doors, windows and other items are approximate and this floorplan is to be used for illustrative purposes only. Unauthorized reproduction is prohibited.



REGISTERED OFFICE 2-4 PACKHORSE ROAD, GERRARDS CROSS, BUCKINGHAMSHIRE, ENGLAND, SL9 7QE. COMPANY NO. 07557114. VAT NO. GB211239453



A stylish two bedroom, two bathroom town centre apartment  
Myrtle Side Close, Northwood, Middlesex HA6 2XH

**ROBSONS**

**Asking Price: £2,700 pcm**

## **A stylish two bedroom, two bathroom town centre apartment**

Myrtle Side Close, Northwood, Middlesex HA6 2XH

---

• ENTRANCE HALL • LIVING/DINING ROOM • KITCHEN • MAIN BEDROOM WITH FITTED WARDROBES & SUITE SHOWER ROOM • BEDROOM TWO WITH FITTED WARDROBE • FAMILY BATHROOM • COMMUNAL GROUNDS • UNFURNISHED

---

### **Description**

Nestled within the sought-after setting of Myrtle Side Close in Northwood, this well-presented two-bedroom, two-bathroom ground floor apartment offers a superb blend of style, comfort, and convenience. Generously proportioned throughout, the property features a bright and spacious living/dining area with large windows that flood the space with natural light, complementing the tasteful modern décor. The kitchen is well-appointed with sleek cabinetry and integrated appliances. Both double bedrooms are generously sized, with the principal bedroom benefiting from a stylish en-suite shower room. A further modern family bathroom serves the second bedroom. Additional features include ample storage, gas central heating, double glazing, and well-maintained communal grounds.

**\*\* An advance reservation payment of one weeks rent is required to secure the property \*\***

### **Location**

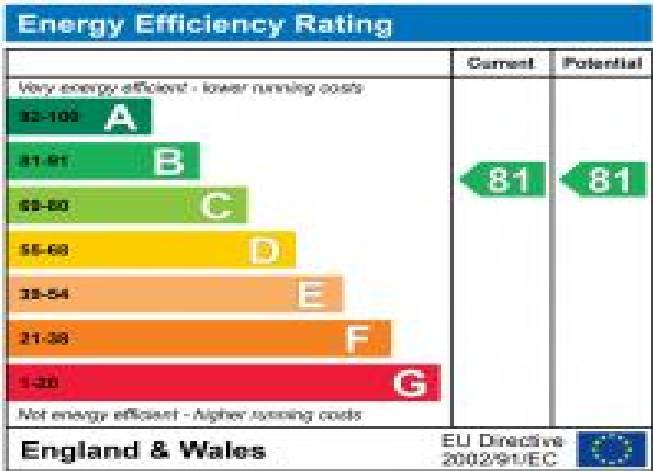
Northwood provides a range of shopping facilities, a Waitrose supermarket, restaurants and the Metropolitan Line Station providing access to Baker Street and the city beyond. The area has a range of both private and state schools. Places of worship and recreational facilities are also well catered for in the surrounding area and major motorway links to M25 and M1 are nearby.



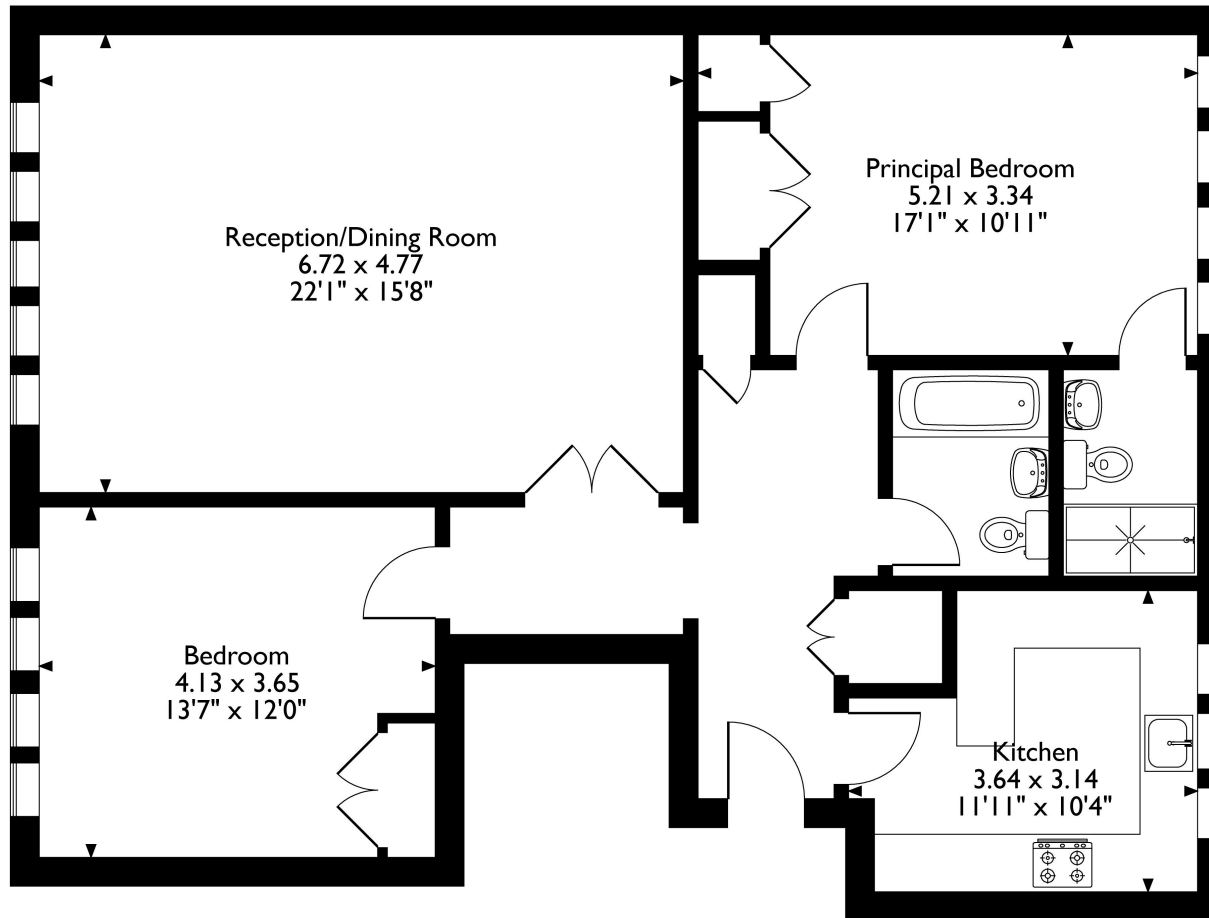


**Additional Information**

- Local Authority: Hillingdon
- Council Tax Band: F
- Deposit Amount: £3,115.00
- Reservation Payment: One weeks rent
- Energy Efficiency Rating: Band B
- Available Date: 27/05/2025



Myrtleside Close, Northwood, HA6 2XH  
Approximate Gross Internal Area  
97 Sq M/1044 Sq Ft



**Ground Floor**

Please note that the location of doors, windows and other items are approximate and this floorplan is to be used for illustrative purposes only. Unauthorized reproduction is prohibited.



REGISTERED OFFICE 2-4 PACKHORSE ROAD, GERRARDS CROSS, BUCKINGHAMSHIRE, ENGLAND, SL9 7QE. COMPANY NO. 07557114. VAT NO. GB211239453