



A delightful two bedroom character cottage in this sought after area in Harefield
Park Lane, Harefield, UB9 6BJ

ROBSONS

Asking Price: £1,800 pcm

A delightful two bedroom character cottage in this sought after area in Harefield

Park Lane, Harefield, UB9 6BJ

• LOUNGE/DINING ROOM • KITCHEN with APPLIANCES • TWO BEDROOMS • BATHROOM • REAR GARDEN • UTILITY ROOM • ON STREET PARKING • UNFURNISHED

Description

A delightful two bedroom character cottage in this sought after area in Harefield. The ground floor offers a spacious living room leading to a modern fitted kitchen and utility room. On the first floor, the master bedroom overlooks the front of the property and bedroom two overlooks the rear garden. The family bathroom is a modern four piece white suite including a panelled bath, W.C with low level flush, wash hand basin with cupboard below and walk-in shower. The rear garden has a large area of lawn and a paved patio area to the rear.

**** An advance reservation payment of one weeks rent is required to secure this property ****

Location

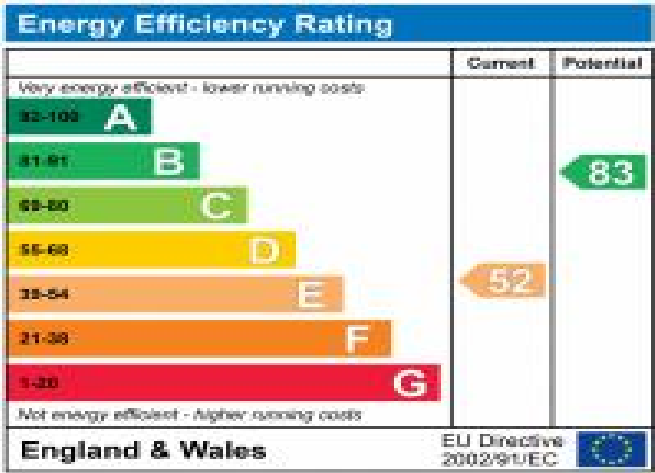
The town centre has the benefit of being adjacent to The Grand Union Canal and surrounding lakes and farmland bordering Buckinghamshire. There is a range of local schools, a thriving village centre, library and popular village green with several popular public houses. Uxbridge Town is approximately 5.4 miles away providing an extensive shopping facility at The Chimes. Public transport via the Metropolitan Line at Northwood and Rickmansworth and the Chiltern Line at Denham and Rickmansworth and the Central Line at West Ruislip, provides easy access into London. The area also offers everything for a sporting life, from cricket, football, tennis, horse riding, Clay Pidgeon shooting and golf. Watersports are also available at the Broadwater Lake and the Aquadrome in Rickmansworth. Major motorway links are



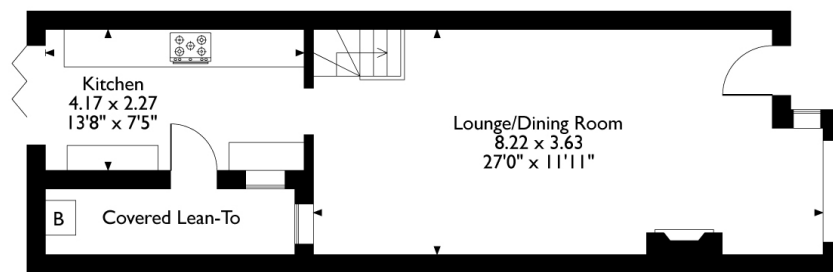


Additional Information

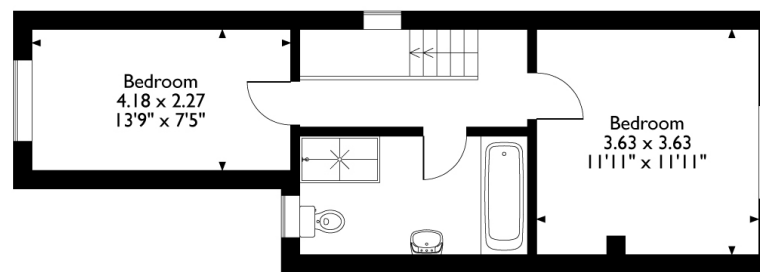
- Local Authority: Hillingdon
- Council Tax Band: D
- Deposit Amount: £2,076.00
- Reservation Payment: One weeks rent
- Energy Efficiency Rating: Band E
- Available Date: 12/05/2025



Park Lane, Harefield, Uxbridge, UB9 6BJ
Approximate Gross Internal Area
75 Sq M/807 Sq Ft



Ground Floor



First Floor

Please note that the location of doors, windows and other items are approximate and this floorplan is to be used for illustrative purposes only. Unauthorized reproduction is prohibited.

