



A three bedroom house in a quiet cul-de-sac location
Rising Hill Close, Northwood, Middlesex HA6 2PH

ROBSONS

Asking Price: £2,350 pcm

A three bedroom house in a quiet cul-de-sac location

Rising Hill Close, Northwood, Middlesex HA6 2PH

• ENTRANCE HALL • RECEPTION ROOM • DINING ROOM • KITCHEN • CLOAKROOM • THREE BEDROOMS • FAMILY BATHROOM • REAR GARDEN • TWO GARAGES • RESIDENTS CAR PARK • UNFURNISHED

Description

An attractive neo Georgian end of terrace three bedroom home situated in a cul de sac location close to the centre of Northwood. The property has a private south-facing rear garden and the advantage of two single garages in a nearby block as well as residence parking.

**** An advance reservation payment of one weeks rent is required to secure the property ****

Location

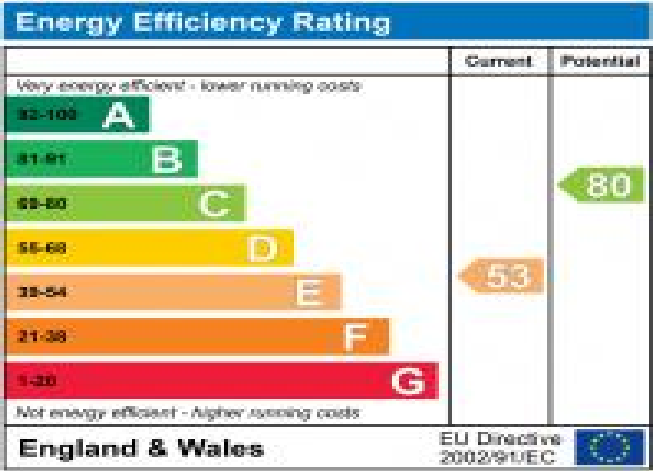
Northwood provides a range of shopping facilities including Waitrose supermarket, a variety of restaurants and other amenities with the Metropolitan Line station providing access to Baker Street and the City. There is a plethora of state and private schooling together with a wide choice of recreational facilities, which include golf courses and fitness centres. The M1, M40 and M25 motorways are also accessible.



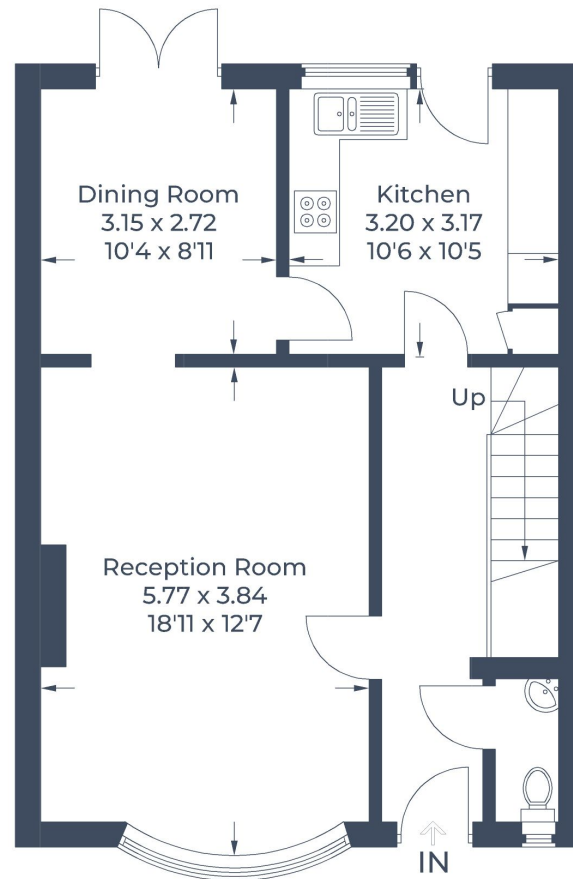


Additional Information

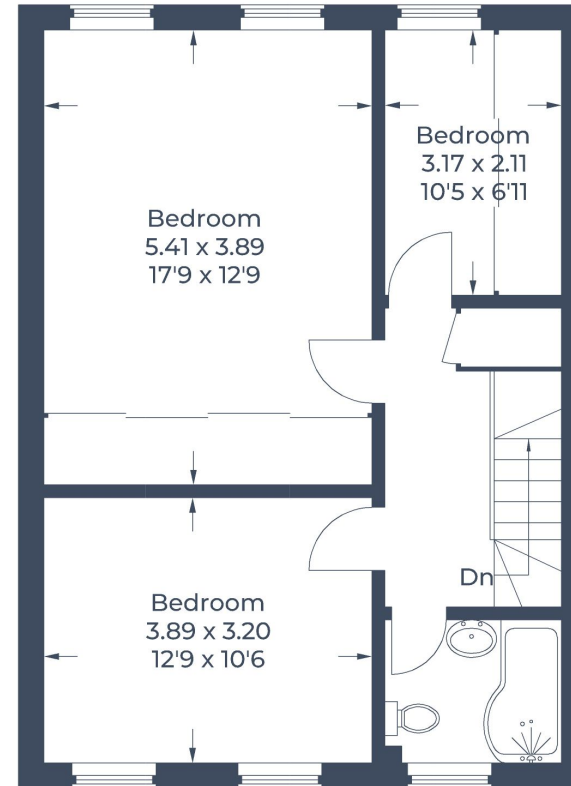
- Local Authority: Hillingdon
- Council Tax Band: F
- Deposit Amount: £2,711.00
- Reservation Payment: One weeks rent
- Energy Efficiency Rating: Band E
- Available Date: 23/04/2025



Approximate Gross Internal Area
Ground Floor = 54.7 sq m / 589 sq ft
First Floor = 53.5 sq m / 576 sq ft
Total = 108.2 sq m / 1,165 sq ft



Ground Floor



First Floor

Illustration for identification purposes only,
measurements are approximate, not to scale.
© CJ Property Marketing Produced for Robsons

