



A three bedroom ground floor apartment with a private patio area
Watford Road, Northwood, HA6 3FE

ROBSONS

Asking Price: £3,250 pcm

A three bedroom ground floor apartment with a private patio area

Watford Road, Northwood, HA6 3FE

• ENTRANCE HALL • OPEN PLAN LIVING/KITCHEN/DINING ROOM • MODERN KITCHEN • MAIN BEDROOM WITH FITTED WARDROBES AND ENSUITE SHOWER ROOM • TWO FURTHER BEDROOMS BOTH WITH FITTED WARDROBES • ACCESS TO PRIVATE PATIO AREA • COMMUNAL GROUNDS • ALLOCATED PARKING SPACE • FURNISHED

Description

This newly renovated three-bedroom ground floor apartment offers modern living at its best. The master bedroom features fitted wardrobes and an ensuite shower room, while the second and third double bedrooms share a stylish family bathroom. The open-plan kitchen and living room provide a bright, spacious area with direct access to a private patio. Finished to a high standard with quality furniture throughout, this apartment also includes an allocated parking space. Perfect for those seeking comfort and style.

**** An advance reservation payment of one weeks rent is required to secure the property ****

Location

Northwood provides a range of shopping facilities including a Waitrose supermarket, a variety of restaurants and other amenities with the Metropolitan Line station providing access to Baker Street and the City. There is a plethora of state and private schooling together with a wide choice of recreational facilities, which include golf courses and fitness centres. The M1, M40 and M25 motorways are also accessible.





Additional Information

- Local Authority: Hillingdon
- Council Tax Band: F
- Deposit Amount: £3,760.00
- Reservation Payment: One weeks rent
- Energy Efficiency Rating: Band B
- Available Date: 24/03/2025

Energy Efficiency Rating		
	Current	Potential
Very energy efficient - lower running costs		
82-100 A		
69-81 B	82	82
55-68 C		
45-54 D		
35-44 E		
21-34 F		
1-20 G		
Not energy efficient - higher running costs		
England & Wales		EU Directive 2002/91/EC



Approximate Gross Internal Area
110.0 sq m / 1,184 sq ft

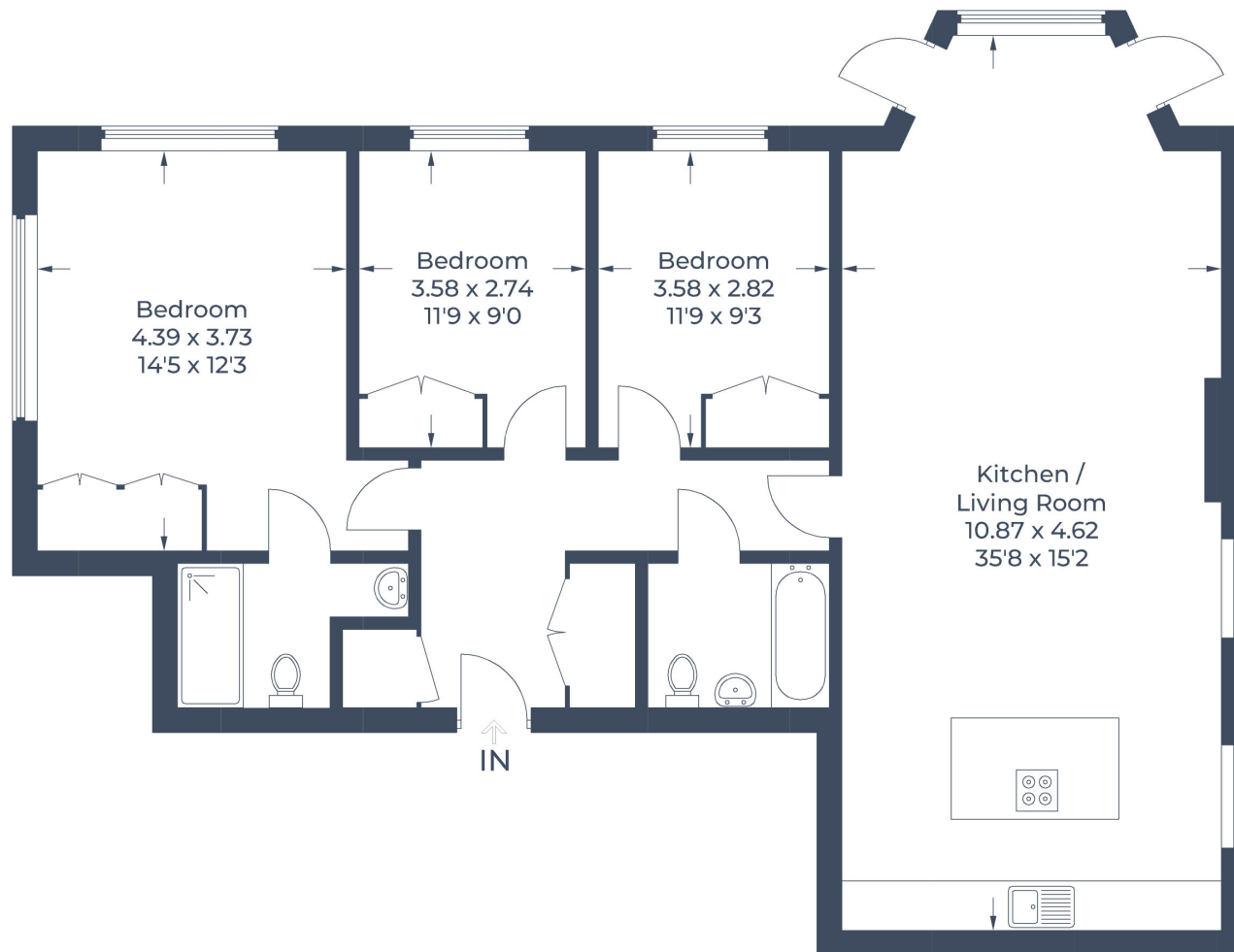


Illustration for identification purposes only,
measurements are approximate, not to scale.
© CJ Property Marketing Produced for Robsons



Middlesex | Hertfordshire | Buckinghamshire



REGISTERED OFFICE 2-4 PACKHORSE ROAD, GERRARDS CROSS, BUCKINGHAMSHIRE, ENGLAND, SL9 7QE. COMPANY NO. 07557114. VAT NO. GB211239453