



A three double bedroom ground floor flat in a central location
Ashurst Close, Northwood, Middlesex HA6 1EL



Asking Price: £3,000 pcm

A three double bedroom ground floor flat in a central location

Ashurst Close, Northwood, Middlesex HA6 1EL

• ENTRANCE HALL • RECEPTION/DINING ROOM • FITTED KITCHEN • MASTER BEDROOM with ENSUITE and FITTED WARDROBES • TWO FURTHER BEDROOMS • FAMILY BATHROOM • UNDERGROUND PARKING SPACE • PRIVATE PATIO • DOUBLE GLAZING • GAS CENTRAL HEATING • FURNISHED or PART FURNISHED

Description

This rarely available, exquisite three-bedroom apartment is located in a private development in Northwood. Situated on the ground floor, the property is filled with natural light throughout. It features an entrance hall, a master bedroom with an ensuite shower and fitted wardrobes, and two spacious additional bedrooms with storage. The apartment also includes a modern family bathroom, a kitchen with integrated appliances, and a large living room with patio doors opening to a private paved area overlooking the communal gardens. Additionally, the property offers off-street underground parking.

**** An advance reservation payment of one weeks rent is required to secure the property ****

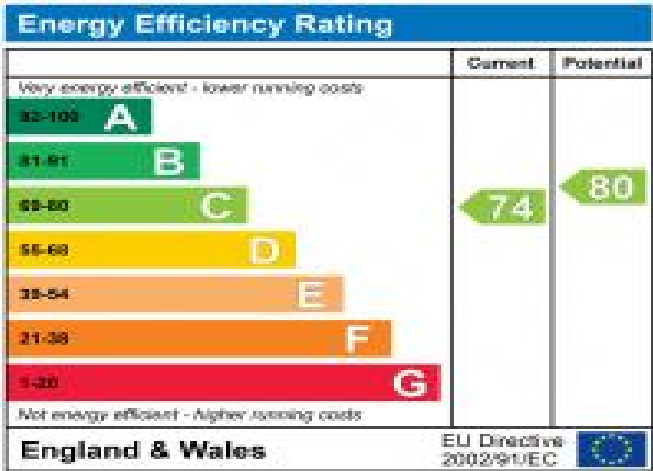
Location

Northwood provides a range of shopping facilities including Waitrose supermarket, a variety of restaurants and other amenities with the Metropolitan Line station providing access to Baker Street and the City. There is a plethora of state and private schooling together with a wide choice of recreational facilities, which include golf courses and fitness centres. The M1, M40 and M25 motorways are also accessible.



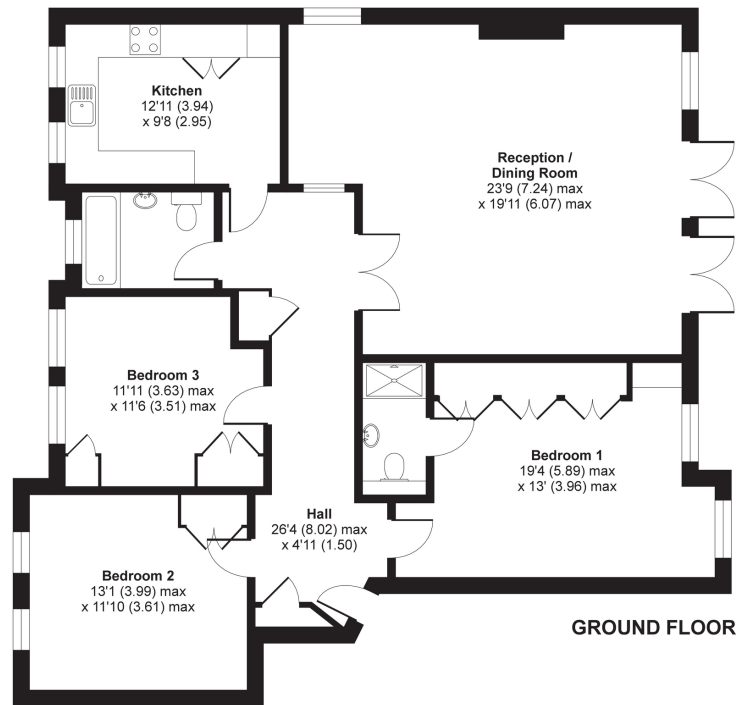
Additional Information

- Local Authority: London Borough of Hillingdon
- Council Tax Band: G
- Deposit Amount: £3,461.00
- Reservation Payment: One weeks rent
- Energy Efficiency Rating: Band C
- Available Date: 31/07/2025



Ashurst Close, Northwood, HA6

APPROX. GROSS INTERNAL FLOOR AREA 1375 SQ FT 127.7 SQ METRES



Whilst every attempt has been made to ensure the accuracy of the floor plan contained here, measurements of doors, windows and rooms are approximate and no responsibility is taken for any error, omission or misstatement. These plans are for representation purposes only as defined by RICS Code of Measuring Practice and should be used as such by any prospective purchaser. Specifically no guarantee is given on the total square footage of the property if quoted on this plan. Any figure given is for initial guidance only and should not be relied on as a basis of valuation.

Copyright nichecom.co.uk 2019 Produced for Robsons Lettings REF : 471381



REGISTERED OFFICE 2-4 PACKHORSE ROAD, GERRARDS CROSS, BUCKINGHAMSHIRE, ENGLAND, SL9 7QE. COMPANY NO. 07557114. VAT NO. GB211239453