



A three double bedroom ground floor flat
Ashurst Close, Northwood, Middlesex HA6 1EL



Asking Price: £2,000 pcm

A three double bedroom ground floor flat

Ashurst Close, Northwood, Middlesex HA6 1EL

• ENTRANCE HALL • RECEPTION/DINING ROOM • FITTED KITCHEN • MASTER BEDROOM with ENSUITE and FITTED WARDROBES • TWO FURTHER BEDROOMS • FAMILY BATHROOM • UNDERGROUND PARKING SPACE • PRIVATE PATIO • DOUBLE GLAZING • GAS CENTRAL HEATING • FURNISHED or PART FURNISHED

Description

Positioned in the heart of Northwood town centre this purpose built ground floor three bedroom apartment offers bright and spacious rooms with high ceilings. Off street parking is also provided with a secure underground space.

* Additional Fees apply (For more information about our fees and how they are calculated please contact a member of staff)

** Expected share of inventory check out cost = £175 inc VAT

Location

Northwood provides a range of shopping facilities including Waitrose supermarket, a variety of restaurants and other amenities with the Metropolitan Line station providing access to Baker Street and the City. There is a plethora of state and private schooling together with a wide choice of recreational facilities, which include golf courses and fitness centres. The M1, M40 and M25 motorways are also accessible.





Additional Information

- Local Authority: London Borough of Hillingdon
- Council Tax Band: G
- Energy Efficiency Rating: Band C
- Available Date: 01/05/2019

Energy Efficiency Rating			Environmental Impact (CO ₂) Rating		
	Current	Potential		Current	Potential
Very energy efficient - lower running costs			Very environmentally friendly - lower CO ₂ emissions		
(92-100) A			(92-100) A		
(81-91) B			(81-91) B		
(69-80) C	74	80	(69-80) C	72	80
(55-68) D			(55-68) D		
(39-54) E			(39-54) E		
(21-38) F			(21-38) F		
(1-20) G			(1-20) G		
Not energy efficient - higher running costs			Not environmentally friendly - higher CO ₂ emissions		
England, Scotland & Wales EU Directive 2002/91/EC			England, Scotland & Wales EU Directive 2002/91/EC		

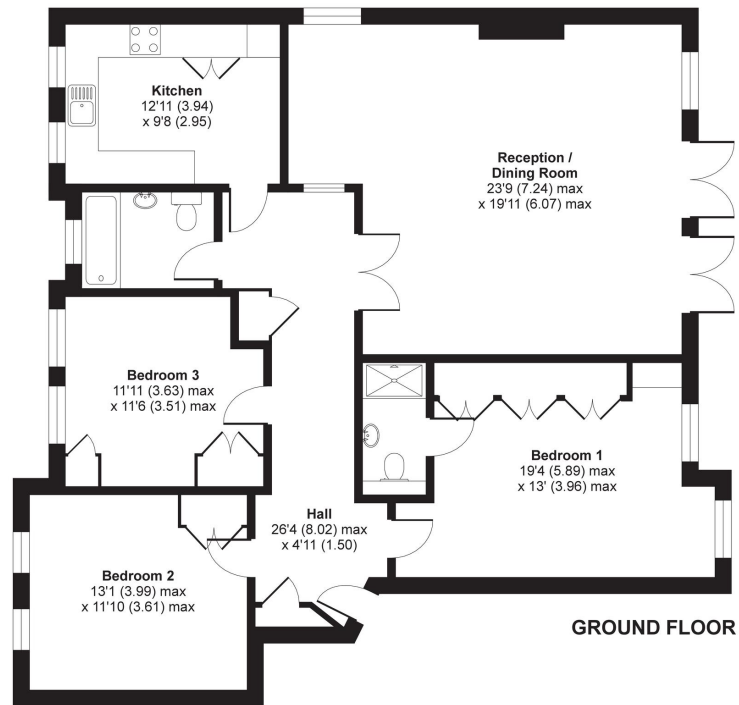
The energy efficiency rating is a measure of the overall efficiency of a home. The higher the rating the more energy efficient the home is and the lower the fuel bills will be.

The environmental impact rating is a measure of a home's impact on the environment in terms of carbon dioxide (CO₂) emissions. The higher the rating the less impact it has on the environment.



Ashurst Close, Northwood, HA6

APPROX. GROSS INTERNAL FLOOR AREA 1375 SQ FT 127.7 SQ METRES



Whilst every attempt has been made to ensure the accuracy of the floor plan contained here, measurements of doors, windows and rooms are approximate and no responsibility is taken for any error, omission or misstatement. These plans are for representation purposes only as defined by RICS Code of Measuring Practice and should be used as such by any prospective purchaser. Specifically no guarantee is given on the total square footage of the property if quoted on this plan. Any figure given is for initial guidance only and should not be relied on as a basis of valuation.

Copyright nichecom.co.uk 2019 Produced for Robsons Lettings REF : 471381

ROBSONS

3 Maxwell Road, Northwood, Middlesex HA6 2XY
T: 01923 822211 F: 01923 820783 E: lettings@robsonswb.com



Robsons Residential Lettings Limited is a company registered in England and Wales and its registered office is at 23 Church Street, Rickmansworth, Hertfordshire WD3 1DE
Registered Number - 07557114 VAT Registered No - 211 239 453