



A two bedroom apartment close to the town centre  
Watford Road, Northwood, HA6 3PX

**ROBSONS**



**Asking Price: £1,800 pcm**

## **A two bedroom apartment close to the town centre**

Watford Road, Northwood, HA6 3PX

---

• COMMUNAL ENTRANCE HALL WITH ENTRYPHONE SYSTEM • ENTRANCE HALL • LARGE RECEPTION ROOM • FITTED KITCHEN • PRINCIPAL BEDROOM WITH ENSUITE • BEDROOM TWO • BATHROOM • RESIDENTS PARKING (NOT ALLOCATED) • GARAGE IN A BLOCK • COMMUNAL GROUNDS • UNFURNISHED

---

### **Description**

This well maintained top floor two bedroom, two bathroom apartment. positioned within close proximity to Northwood Station and shops. The apartment comprises a large reception room, well-appointed kitchen, principal bedroom with en-suite, second bedroom and family bathroom. Further benefits include residents parking, a garage and an entry phone system.

**\*\* An advance reservation payment of one weeks rent is required to secure the property \*\***

### **Location**

Northwood provides a range of shopping facilities including Waitrose supermarket, a variety of restaurants and other amenities with the Metropolitan Line station providing access to Baker Street and the City. There is a plethora of state and private schooling together with a wide choice of recreational facilities, which include golf courses and fitness centres. The M1, M40 and M25 motorways are also accessible.

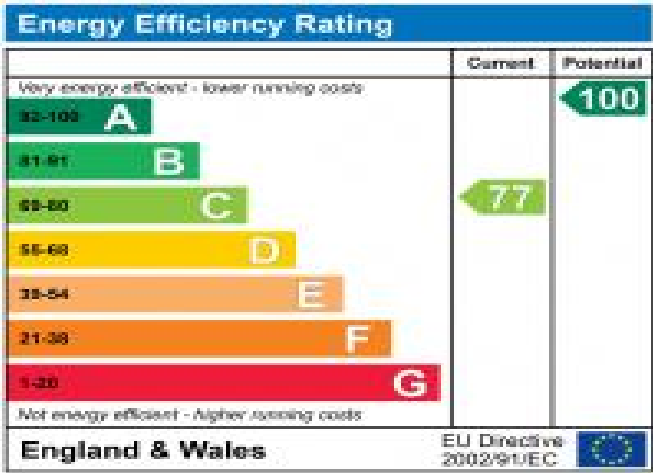






**Additional Information**

- Local Authority: Hillingdon
- Council Tax Band: E
- Deposit Amount: £2,076.00
- Reservation Payment: One weeks rent
- Energy Efficiency Rating: Band C
- Available Date: 04/02/2025



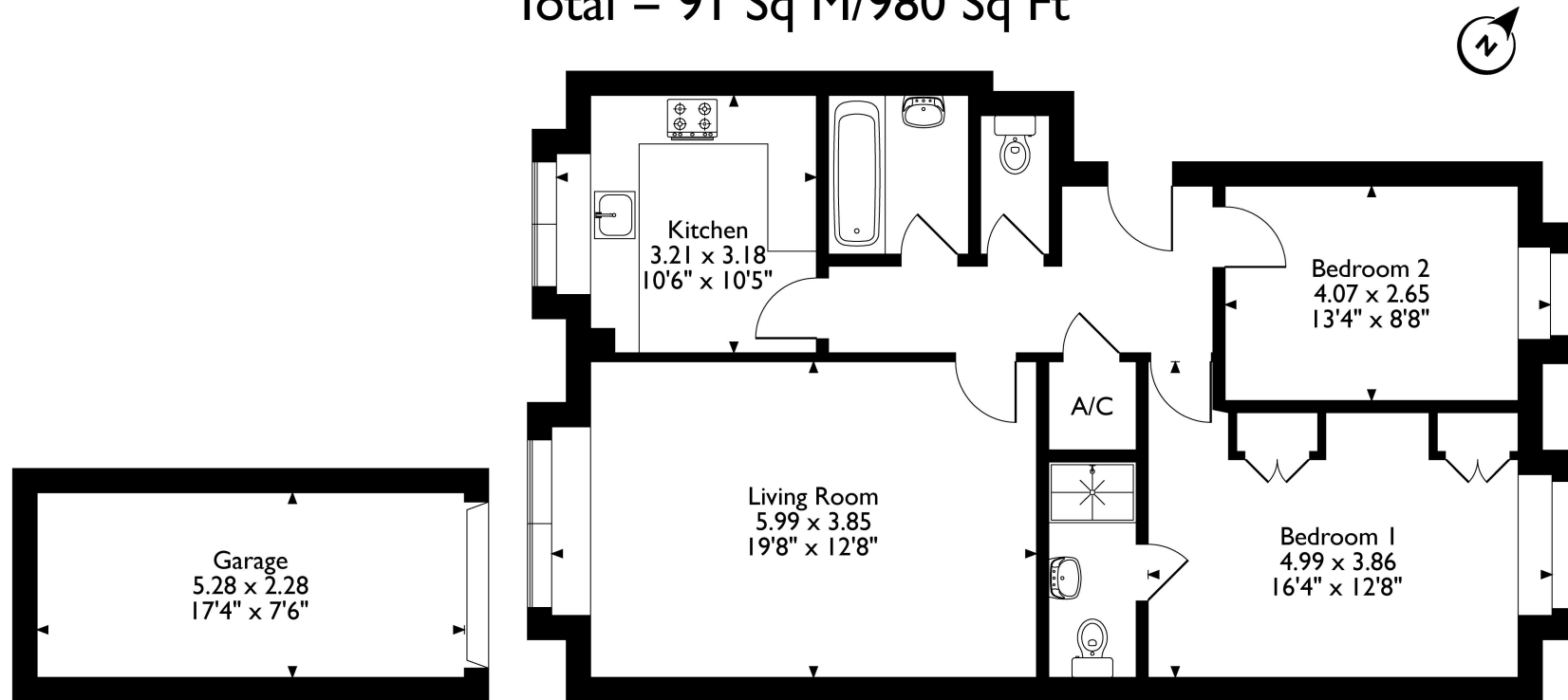
# Daintry Lodge, Watford Road, Northwood

Approximate Gross Internal Area

Main House = 79 Sq M/850 Sq Ft

Garage = 12 Sq M/129 Sq Ft

Total = 91 Sq M/980 Sq Ft



## Second Floor

Please note that the location of doors, windows and other items are approximate and this floorplan is to be used for illustrative purposes only. Unauthorized reproduction is prohibited.

