



A stunning three bedroom, three bathroom house overlooking the River Chess
Troutstream Way, Rickmansworth, WD3 4LA

ROBSONS

Asking Price: £8,500 pcm

A stunning three bedroom, three bathroom house overlooking the River Chess

Troutstream Way, Rickmansworth, WD3 4LA

• RECEPTION HALL • OPEN PLAN KITCHEN/DINING ROOM • LIVING ROOM • UTILITY ROOM • SHOWER ROOM/WC • MAIN BEDROOM SUITE WITH DRESSING ROOM & BALCONY • TWO FURTHER BEDROOMS WITH ACCESS TO BALCONY • RECEPTION ROOM THREE • BATHROOM • SECLUDED REAR GARDEN • FURNISHED • GARAGE

Description

Robsons are delighted to offer this stunning 3 bedroom, 3 bathroom HUF Haus located in the prestigious Loudwater Private Estate. Upon entering, the spacious entrance hallway leads to an immaculate modern kitchen with Gaggenau appliances, dining area and living area with feature fireplace. There is also a separate utility room and downstairs shower room. Upstairs, the master suite features generous built-in wardrobes and an en-suite bathroom with a walk-in shower and bath tub. The two additional double bedrooms also boast excellent storage space and family bathroom. Outside, the private garden with decked area overlooking the River Chess, and an impressive water feature. To the front there is a driveway with ample parking and double garage.

** An advance reservation payment of one weeks rent is required to secure

Location

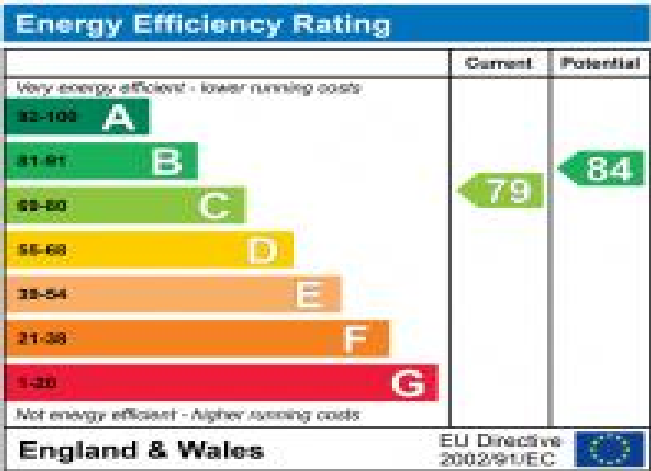
Rickmansworth town centre has a wide range of boutique shops, coffee houses, restaurants and major supermarkets. The Metropolitan and Chiltern line train services connect you to London Baker Street, Marylebone Station and beyond. The M25 motorway is available at both junction 17 and 18, connecting you to the national motorway network. Major London airports are also within reach. The area is well served for good quality private and state schools for all ages. Chorleywood and Rickmansworth offer everything for the sporting individual from rugby, cricket, football, tennis, horse riding and golf. Rickmansworth Aquadrome is an ideal setting for walks, sailing, fishing and water skiing





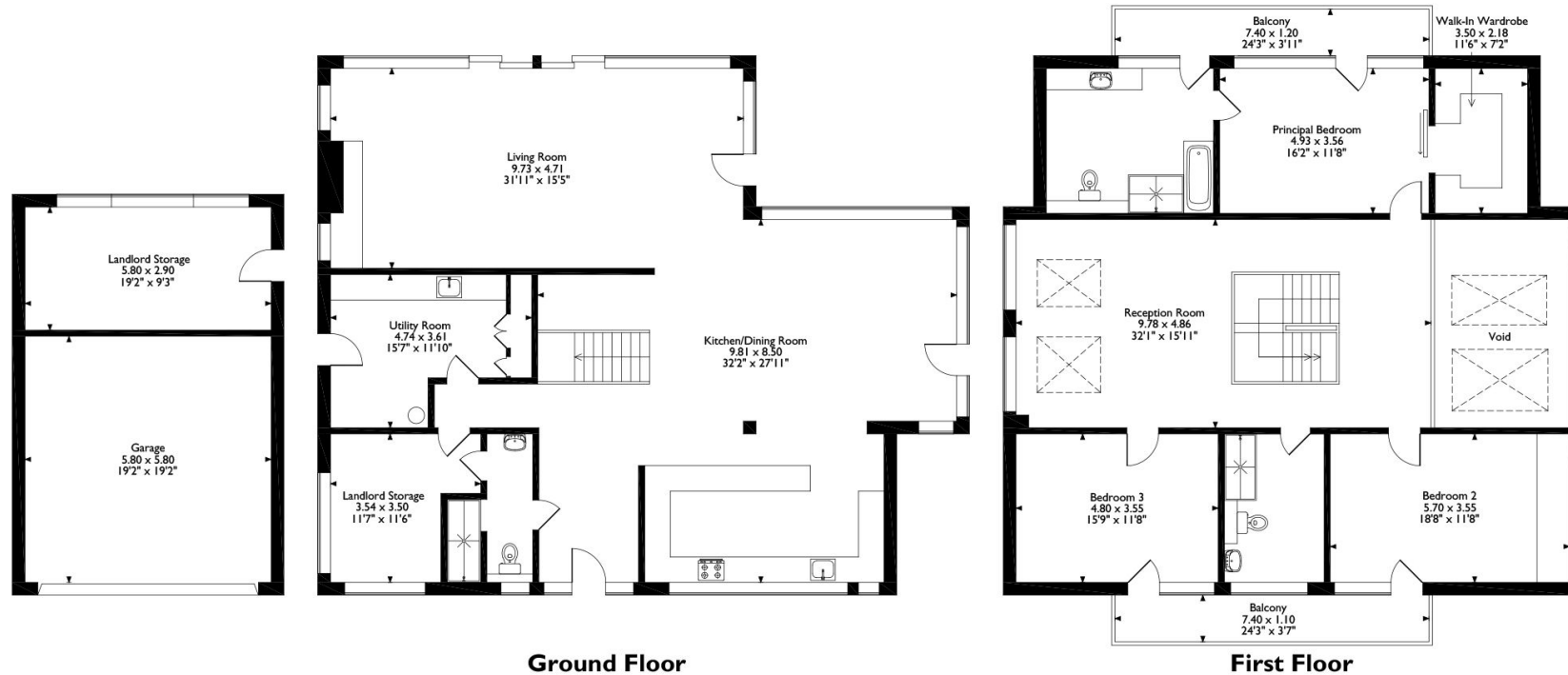
Additional Information

- Local Authority: Three Rivers
- Council Tax Band: H
- Deposit Amount: £11,769.00
- Reservation Payment: One weeks rent
- Energy Efficiency Rating: Band C
- Available Date: 06/01/2025



Mayfly, Troutstream Way, Loudwater, Rickmansworth, Hertfordshire, WD3 4LA

Approximate Gross Internal Area
Main House = 289 Sq M/3111 Sq Ft
Garage/Outbuilding = 51 Sq M/549 Sq Ft
Total = 340 Sq M/3660 Sq Ft



Please note that the location of doors, windows and other items are approximate and this floorplan is to be used for illustrative purposes only. Unauthorized reproduction is prohibited.



REGISTERED OFFICE 2-4 PACKHORSE ROAD, GERRARDS CROSS, BUCKINGHAMSHIRE, ENGLAND, SL9 7QE. COMPANY NO. 07557114. VAT NO. GB211239453