

A split level two bedroom maisonette with allocated parking space
Watford Field Road, Watford, Hertfordshire WD18 0BH

ROBSONS

Asking Price: £1,650 pcm

A split level two bedroom maisonette with allocated parking space

Watford Field Road, Watford, Hertfordshire WD18 0BH

• PRIVATE FRONT DOOR AND STAIRS TO • FIRST FLOOR - LIVING ROOM • KITCHEN/DINER • SECOND FLOOR - BEDROOM ONE WITH ENSUITE SHOWER ROOM • BEDROOM TWO • BATHROOM • SECURE PARKING SPACE • PART FURNISHED

Description

This fantastic two double bedroom, two bathroom split-level maisonette, positioned within a private gated mews, the property is contemporary in style with lots of natural light and in excellent condition throughout. Offering versatile accommodation, the property is accessed via a private front door. To the first floor, a large reception room with a well-equipped kitchen/diner and further storage cupboard. To the 2nd floor, the principal bedroom with en-suite and fitted wardrobes, a further double bedroom and family bathroom. It benefits from a secure private car parking space, one of only two within the mews.

** An advance reservation payment of one weeks rent is required to secure the property **

Location

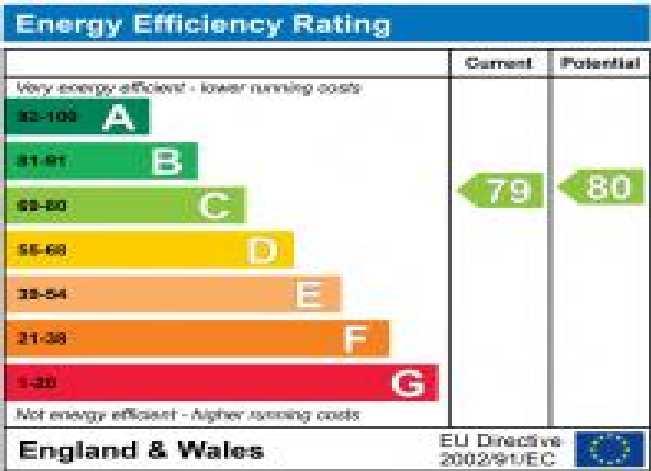
Overlooking Watford Fields, the maisonette is close to Watford town centre, with its many shops, restaurants and amenities. Watford benefits from an Atria Shopping Centre, with many high street names, as well as large chain supermarkets. Watford High Street station is only a short walk away (0.1 miles) and nearby is Bushey station (0.4 miles) and Watford Junction station (0.9 miles), all providing access into Central London. Nearby is the M25 and M1 Motorways which provide easy access to the national motorway network. Close by are highly regarded Watford Grammar schools for boys and girls.



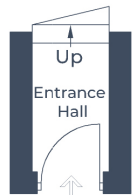


Additional Information

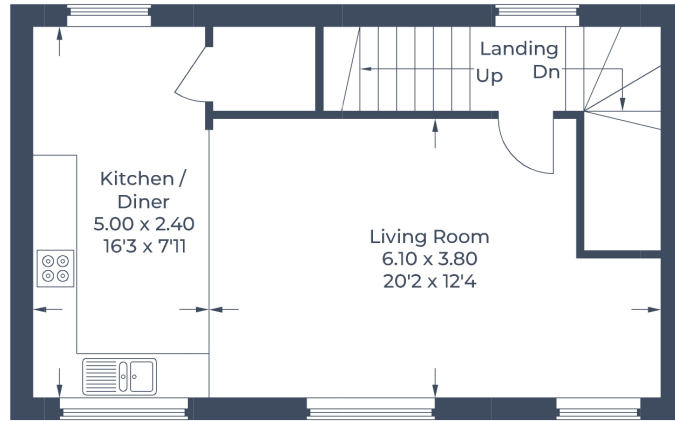
- Local Authority: Watford
- Council Tax Band: C
- Deposit Amount: £1,903.00
- Reservation Payment: One weeks rent
- Energy Efficiency Rating: Band C
- Available Date: 20/09/2024



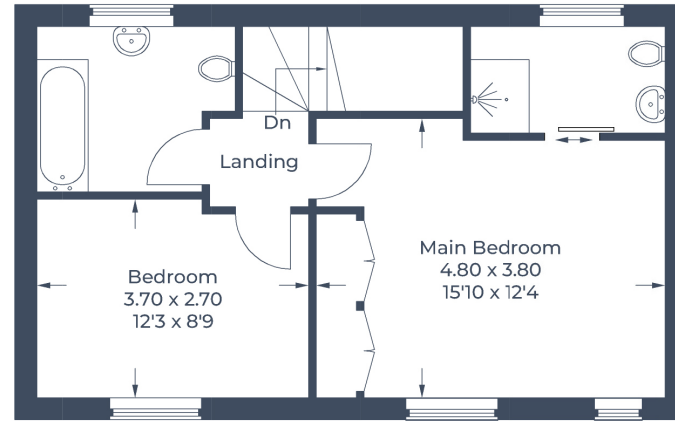
Approximate Gross Internal Area
 Ground Floor = 2.1 sq m / 23 sq ft
 First Floor = 42.4 sq m / 456 sq ft
 Second = 42.4 sq m / 456 sq ft
 Total = 86.9 sq m / 935 sq ft



Ground Floor



First Floor



Second Floor

Illustration for identification purposes only,
 measurements are approximate, not to scale.
 © CJ Property Marketing Produced for Robsons

